



2018-19 DELAWARE

WOMEN'S BASKETBALL

Maggie Hayon, Assistant Athletics Communications Director | O: 302-831-6389 | C: 920-912-6635 | mhayon@udel.edu
University of Delaware | Bob Carpenter Center | 631 S. College Ave. | Newark, DE 19716

SCHEDULE/RESULTS

N9	at Northern Iowa #	L	79-67
N16	vs. Montana State #	L	69-60
N17	vs. Nicholls #	W	71-56
N20	at Delaware State	W	85-77
N23	vs. Bradley ^	L	59-47
N24	vs. Lafayette ^	W	65-47
D2	at Boston University	L	72-61
D6	at George Mason	L	72-46
D9	UCF	L	71-60
D18	Gardner-Webb	W	69-45
D20	#5/5 Maryland	L	77-53
D28	Saint Joseph's	W	48-39
J4	James Madison * TV	L	68-43
J6	Towson *	L	56-48
J13	Drexel * TV	L	57-40
J18	at Hofstra *	W	78-59
J20	at Northeastern *	L	75-62
J25	UNCW *	W	65-53
J27	College of Charleston *	W	74-50
F1	at William & Mary *	W	70-59
F3	at Elon *	W	74-63
F10	at Drexel * TV	L	58-41
F15	Northeastern *	W	77-63
F17	Hofstra *	2 p.m.	
F22	at College of Charleston *	6:30 p.m.	
F24	at UNCW *	2 p.m.	
M1	Elon *	7 p.m.	
M3	William & Mary *	2 p.m.	
M7	at Towson *	2 p.m.	
M9	at James Madison *	2 p.m.	

CAA Tournament at Delaware

M13	CAA First Round	12/2:30 p.m.
M14	CAA Quarterfinals	12/2:30/5/7:30 p.m.
M15	CAA Semifinals	1/4 p.m.
M16	CAA Finals TV	1 p.m.

- Preseason WNIT | ^ - FAU Thanksgiving Tournament
* - CAA Game | TV - NBC Sports Phil./Wash., SNY, COZI TV
Home games played at Bob Carpenter Center
Times/dates subject to change
All times Eastern

#BLUEHENS ONLINE

Website	BlueHens.com
Facebook	facebook.com/DelawareBlueHens
	facebook.com/DelawareWomensBasketball
Instagram	UDBlueHens
	DelawareWBB
Twitter	@DelawareWBB
	@CoachAdair
YouTube	youtube.com/UDBlueHens

GAMEDAY CENTRAL

GAME TWENTY-FOUR | University of Delaware vs. Hofstra University



Delaware (11-12 | 6-5 CAA)

BLUE HENS

Date Sunday, February 17, 2019

Time 2 p.m. Eastern

Location Bob Carpenter Center

..... Newark, Del.

Radio Fox Sports 1290/1410 WDOV

..... Matt Janus (pxp), Christine Motta (color)

Stream Hens All-Access

Live Stats BlueHenStats.com

Twitter @DelawareWBB



Hofstra (7-17 | 1-11 CAA)

PRIDE

THE GAME

- » Delaware has won five of its last six contests.
- » Samone DeFreese dropped a career-high 31 points against Northeastern on Friday night.
- » The Blue Hens are celebrating National Girls and Women in Sports Day on Sunday.
- » Hofstra has lost five straight.

THE SERIES

- » Sunday's meeting will be the 73rd all-time between the Delaware and Hofstra women's basketball programs.
- » The Blue Hens hold the all-time series advantage of 60-12 over the Pride.
- » Delaware has won 18 of the last 21 versus Hofstra.
- » Earlier this season, the Hens topped the Pride, 78-59, on Long Island.
- » UD is 33-1 all-time against HU in Newark. Hofstra's lone win on the road came on January 8, 2009 when the Pride defeated the Blue Hens, 62-53, in overtime at the Bob.

THE COACHES

- » **Natasha Adair** (South Florida '94) is in her second season at Delaware after being named just the fourth women's basketball coach in the program's illustrious history on May 14, 2017.
- » Adair joined the Blue Hens from Georgetown, where she turned around a four-win Hoya program to a postseason contender in three seasons as head coach.
- » Now in her seventh season, Adair recorded her 100th career victories as a head coach last week at William & Mary.
- » **Krista Kilburn-Steveskey** (NC State '90) is in her 13th season as the head coach at Hofstra and is the program's winningest coach with 209 victories. She is 6-21 all-time versus Delaware.

STAT COMPARISON

	UD	HU
Record	11-12	7-17
PPG	61.0	59.1
Opp PPG	61.9	67.0
Margin	-0.9	-7.9
FG %	.374	.392
Opp FG %	.365	.439
3pt %	.303	.308
Opp 3pt %	.300	.301
FT %	.648	.616
Opp FT %	.693	.686
RPG	41.0	32.5
Opp RPG	40.6	37.1
Margin	+0.5	-4.6
APG	13.4	12.3
TOPG	16.0	17.8
A/TO	0.8	0.7
SPG	8.9	6.7
BPG	4.7	2.0
FPG	19.9	19.1

PROJECTED DELAWARE STARTERS

Pos.	No.	Name	Ht.	Yr.	PPG	RPG	APG	SPG	BPG	MPG
G	2	Abby Gonzales	5-7	Jr.	9.0	2.6	2.9	1.4	0.1	32.4
G	23	Bailey Kargo	5-10	Jr.	6.2	1.0	1.0	0.5	0.1	19.3
G	22	Samone DeFreese	6-0	Jr.	10.9	6.8	2.2	1.1	0.1	27.1
F	25	Rebecca Lawrence	6-3	Jr.	5.2	3.9	0.3	0.5	1.6	20.5
F	12	Lizzie O'Leary	6-2	So.	2.5	2.6	0.5	0.4	0.2	11.3

@DELAWAREWBB

QUICK FACTS

Location.....Newark, Del. 19716
 Founded.....1743
 Enrollment18,948 Undergraduate
 NicknameBlue Hens
 Official MascotYoUDee
 Colors.....Blue (PMS 2945c) & Yellow (PMS 109c)
 Affiliation.....NCAA Division I
 Conference.....Colonial Athletic Association (CAA)
 Home FacilityBob Carpenter Center | 5,000

ADMINISTRATION

PresidentDennis Assanis
 NCAA Faculty Delegate.....Tammy Anderson
 Director of Athletics.....Chrissi Rawak
 Sport Administrator/SWAJen Vining-Smith

2017-18 SEASON IN REVIEW

Overall Record.....19-13
 CAA Record | Finish11-7 | Fourth
 Home | Away | Neutral9-4 | 8-8 | 2-1
 Postseason Play.....1-2

Fell to Drexel, 58-53, in CAA Semifinals

Fell to Georgetown, 67-57, in Postseason WNIT

2018-19 SEASON PREVIEW

Starters Returning/Lost4/1*
 Letterwinners Returning/Lost11/3
 Newcomers/Redshirts3
 Top Returnees ... Samone DeFreese, Abby Gonzales,
 Makeda Nicholas, Bailey Kargo
 Key lossesNicole Enabosi*
 Team Captains....Samone DeFreese, Nicole Enabosi,
 Abby Gonzales, Makeda Nicholas
 * Nicole Enabosi out due to injury

PROGRAM HISTORY

First Year of Women's Basketball 1971-72 (8-4)
 All-Time Record773-518 (.599)
 All-Time CAA Record210-105 (.667)
 All-Time CAA Tournament Record25-16 (.610)
 CAA Titles | Last.....2 | 2013
 NCAA Championshipsn/a
 NCAA Tournament Appearances | Last.....4 | 2013
 All-Time NCAA Tournament Record.....3-4
 WNIT Championships.....n/a
 WNIT Postseason Appearances | Last8 | 2018
 All-Time WNIT Postseason Record.....0-8

2018-19 DELAWARE BLUE HENS

No.	Name	Cl.	Pos.	Ht.	Hometown/Previous School
0	Gadson Lefft	r-Sr.	F/G	6-0	Lake Wylie, S.C./Heathwood Hall/Phillips Acad. (Clemson)
1	Lolo Davenport *	Fr.	G/F	6-1	Plano, Texas/Plano
2	Abby Gonzales ©	Jr.	G	5-7	Wexford, Pa./North Allegheny
4	Paris McBride	Fr.	G	5-4	Woodbridge, Va./Woodbridge
5	Makeda Nicholas ©	Gr.	F	6-1	North Babylon, N.Y./North Babylon
12	Lizzie Oleary	So.	F	6-2	Abington, Pa./Abington Senior
20	Jasmine Dickey	Fr.	G/F	5-10	Baltimore, Md./Catonsville
22	Samone DeFreese ©	Jr.	F	6-0	Bergenfield, N.J./Berkshire (Mass.)
23	Bailey Kargo	Jr.	G	5-10	Greensboro, N.C./Walter Hines Page
25	Rebecca Lawrence	Jr.	F	6-3	Ridgefield, Conn./Ridgefield
30	Kayla Shaw ^	r-So.	G	5-10	Scottsdale, Ariz./Chaparral (Monmouth)
33	Nicole Enabosi * ©	Sr.	F	6-0	Gaithersburg, Md./Our Lady of Good Counsel
35	Alison Lewis	r-Sr.	G	5-9	Kennett Square, Pa./Sanford (Providence)
44	Erin Antosh *	So.	F/C	6-3	Townsend, Mass./Lawrence Academy

© = Captains ^ = Will sit out 2018-19 campaign due to NCAA transfer regulations * = Will miss season due to injury

COACHING STAFF

HC: Natasha Adair | USF '94 | Second Season at UD (30-25) | Seventh Season Overall (102-110)

AHC: Bob Clark | Towson '84 | Second Season

AC: Sarah Jenkins (Recruiting Coordinator) | Georgetown '05 | Second Season

AC: Mykala Walker | Wake Forest '13 | Second Season

DOBO: Adrienne Eisenhauer | Kansas State '16 | First Season

ADOBO: David White | North Carolina '11 | Second Season

SUPPORT STAFF

Team Athletic Trainer: Melanee Johnson | Howard '03 | Third Season

Senior Student Athletic Trainer: Ethan Lennox

Athletics Communications: Maggie Hayon | Marquette '08 | Seventh Season | mhayon@udel.edu

Managers: tba

PRONUNCIATIONS

5 | Makeda Nicholas | muh-KAY-duh

12 | Lizzie Oleary | oh-leer-ee

HC | Natasha Adair | aye-dare

22 | Samone DeFreese | suh-mone

AC | Mykala Walker | mic-kay-luh

33 | Nicole Enabosi | en-uh-bo-cee

CATEGORY LEADERS

Points.....	10.9.....	Samone DeFreese
Rebounds.....	8.7.....	Jasmine Dickey
Assists.....	3.1.....	Paris McBride
Steals.....	1.5.....	Jasmine Dickey
Blocks.....	1.6.....	Rebecca Lawrence
3-pointers.....	1.9.....	Abby Gonzales
FG % (at least 50 Att.).....	.423 (90-213).....	Samone DeFreese
3pt % (at least 30 Att.).....	.361 (44-122).....	Abby Gonzales
FT % (at least 30 Att.).....	.789 (30-38).....	Abby Gonzales
Minutes.....	32.3.....	Abby Gonzales

LAST TIME OUT

Samone DeFreese recorded a career night Friday evening as the Blue Hens defeated Northeastern, 77-63, during the team's annual Women's Health Awareness Game at the Bob Carpenter Center. DeFreese finished the contest with 31 points on 14-of-24 shooting from the field to go along with nine rebounds in 35 minutes of action. Delaware (11-12, 6-5 CAA) also saw a career-high 14 points from **Paris McBride**, all of which came from the charity stripe. The point guard tallied eight of her points in the fourth quarter. **Makeda Nicholas** added 10 points and eight rebounds for UD. The Hens, who lost to the Huskies by nearly the same score in Boston on January 20, held the lead for the majority of the game, but were not able to fully break away until a 30-point fourth quarter. Northeastern (15-8, 5-7 CAA) cut the lead to two with 7:56 remaining in the game, but UD rallied to score eight straight points and never look back.

LAST TIME VS. HOFSTRA | FRIDAY, JANUARY 18, 2019 | MACK SPORTS COMPLEX

The Blue Hens captured their first CAA victory of the season with the 78-59 decision over Hofstra. Delaware (6-10, 1-3 CAA) bounced back from three straight games of poor shooting performances to go 30-of-62 (.484) from the field for its second-highest shooting percentage of the season so far. The Blue Hens received at least two points and one rebound from every player who saw playing time while **Samone DeFreese** led the way with 19 points on 8-of-12 shooting from the floor. DeFreese added eight rebounds in the win. **Makeda Nicholas** contributed 12 points, eight rebounds and four assists while **Jasmine Dickey** logged her fourth career double double after finishing the day with 11 points and 11 rebounds.

LAST TIME AT HOME VS. HOFSTRA | SUNDAY, FEBRUARY 11, 2018 | BOB CARPENTER CENTER

The Blue Hens held Hofstra to just 11 total points in the second and third quarters en route to the 61-41 victory. Delaware trailed by five after the first quarter, but rallied for a 30-7 run over the next 15 minutes and never looked back. **Nicole Enabosi** neared her second 20-20 game of the season and finished with 17 points and 19 rebounds to go along with five steals. **Samone DeFreese** collected her fifth career double double with 18 points and 10 rebounds while shooting 9-of-12 from the field. The Hens outrebounded the Pride, 49-34.

JASMINE DICKEY OUT INDEFINITELY WITH BROKEN LEFT HAND

Blue Hens rookie standout **Jasmine Dickey** will be out indefinitely after undergoing surgery on February 8 for a broken hand sustained during practice earlier in the week.

NATASHA ADAIR REACHES CAREER-WIN 100

Delaware head coach **Natasha Adair** collected her 100th career victory with Delaware's 70-59 win at William & Mary. Adair, who previously coached five total seasons at the College of Charleston and Georgetown University, has 30 wins in two seasons at the helm of the Hens.

CREDENTIAL APPLICATIONS OPEN FOR 2019 CAA WOMEN'S BASKETBALL CHAMPIONSHIP

Media credential applications for the 2019 CAA Women's Basketball Championship are now being accepted at <http://www.sportssystem.com/caabasketball/women>. Applications will be accepted through Sunday, March 10.

DELAWARE EXTREMES

Largest lead.....26 vs. College of Charleston, 1/27
.....26 vs. Gardner-Webb, 12/18
Largest deficit.....31 vs. James Madison, 1/4
Largest halftime lead.....19 vs. Gardner-Webb, 12/18
Largest halftime deficit.....
.....18 vs. James Madison, 1/4
Largest lead in loss.....6 at Northeastern, 1/20
.....6 at Northern Iowa, 11/9
Largest deficit in win.....8 at Delaware State, 11/20
Largest halftime lead in loss.....
Largest halftime deficit in win.....
.....6 at Delaware State, 11/20
Largest lead at home.....26 vs. Gardner-Webb, 12/18
.....26 vs. College of Charleston, 1/27
Largest deficit at home.....31 vs. JMU, 1/4
Largest lead on road.....20 vs. Lafayette, 11/24
Largest deficit on road.....
.....28 at George Mason, 12/6
Most Points.....85 at Delaware State, 11/20

Field Goals Made.....32 at Delaware State, 11/20
Field Goal Attempts.....78 vs. Towson, 1/6
FG Percentage......491 vs. Gardner-Webb, 12/18
3-pt FG Made.....8 at Elon, 2/3
.....8 at Delaware State, 11/20
3-pt FG Att.19 at Northeastern, 1/20
.....19 at Delaware State, 11/20
3-pt FG Percentage......875 vs. Gardner-Webb, 12/18
Free Throws Made.....24 vs. Northeastern, 2/15
Free Throw Attempts.....36 vs. Northeastern, 2/15
FT Percentage......867 at Delaware State, 11/20
Rebounds.....54 vs. Towson, 1/6
Assists.....26 at Delaware State, 11/20
Steals.....15 vs. College of Charleston, 1/27
Blocks.....9 vs. Gardner-Webb, 12/18
TO (Most).....23 vs. Bradley, 11/23
TO (Fewest).....10 at Northern Iowa, 11/9
Fouls.....28 at Northern Iowa, 11/9

TRENDS

	Overall	Home	Rd/Ntl
Overall Record	11-12	5-5	6-7
Conference Record.....	6-5	3-3	3-2

SCORING

Leading at half.....	7-0	4-0	3-0
Trailing at half.....	2-12	0-5	2-7
Tied at half.....	2-0	1-0	1-0
Scoring first.....	7-6	4-2	3-4
Games decided by five points or less.....			
Games decided by 6-10 points.....	2-2	1-1	1-1
Leading with 2:00 left.....	11-0	5-0	6-0
Overtime games.....			
Double Overtime games.....			

OFFENSE

UD scores 80+ points.....	1-0		1-0
UD scores 70-79 points.....	5-0	2-0	3-0
UD scores 60-69 points.....	4-4	2-1	2-3
UD scores <60 points.....	1-8	1-4	0-4
Shooting 45% or better.....	6-0	1-0	5-0
Shooting less than 45%.....	5-10	4-4	1-6
FT % over .700.....	4-2	1-1	3-1
Player scoring 30+ points.....	1-0	1-0	
Player scoring 20+ points.....	5-2	3-0	2-2
Two-plus players in double digits.....	10-6	4-2	6-4

DEFENSE

OPP scores 80+ points.....			
OPP scores 70-79 points.....	1-6	0-2	1-4
OPP scores 60-69 points.....	2-2	1-1	1-1
OPP scores <60 points.....	8-4	4-2	4-2
More steals than OPP.....	9-3	5-1	4-2
Less steals than OPP.....	2-7	0-4	2-3
Even steals.....	0-2		0-2

REBOUNDING/TURNOVERS

More rebounds than OPP.....	8-4	4-1	4-3
Less rebounds than OPP.....	3-8	1-4	2-4
Even rebounding.....			
More TO than OPP.....	1-5	0-2	1-3
Less TO than OPP.....	8-4	3-2	5-2
Even TO.....	2-3	2-1	0-2

MONTHS

November.....	3-3		3-3
December.....	2-4	2-2	0-2
January.....	3-4	2-3	1-1
February.....	3-1	1-0	2-1
March.....			

DAYS

Sunday.....	2-6	1-3	1-3
Monday.....			
Tuesday.....	2-0	1-0	1-0
Wednesday.....			
Thursday.....	0-2	0-1	0-1
Friday.....	5-4	3-1	2-3
Saturday.....	2-0		2-0

TIME

Day.....	7-7	3-3	4-4
Night (after 5 p.m. local time).....	3-5	1-2	2-3

UNIFORM

Blue.....	6-4		6-4
White.....	4-7	4-5	0-2
Pink.....	1-1	1-0	0-1

MISCELLANEOUS

UD controls tip.....	10-8	4-2	6-6
Following a UD win.....	4-6	1-2	3-4
Following a UD loss.....	7-5	4-3	3-2

THE LAST TIME UD...

SCORING

Scored 100+ points:2/27/81 vs. Temple (W, 101-96 ot)
Allowed 100+ points:2/13/97 at Maine (L, 54-102)
Held under 40 points:3/12/09 vs. Towson (L, 37-40)
Held opponent under 40 points:12/28/18 vs. Saint Joseph's (W, 48-39)
Held opponent under 30 points:1/10/13 vs. George Mason (W, 62-27)
Made 6+ 3-pointers:2/3/19 at Elon (8-11)
Made 0 3-pointers:2/5/19 at Drexel (0-8)
Allowed 6+ 3-pointers:2/15/19 vs. Northeastern (7-22)
Shot .500 FG%:3/3/17 at Towson (.517; 30-58)
Allowed .500 FG%:2/4/18 at Northeastern (.540)
Had 5 Players w/10+ Pts:2/28/16 at UNCW (5)

REBOUNDING

Grabbed 60 rebounds:11/14/14, 60 at Lafayette
Grabbed 50 rebounds:2/16/19, 52 vs. Northeastern
Opponent grabbed 60 rebounds:1/8/17, 62 by Elon
Opponent grabbed 50 rebounds:1/4/19, 59 by James Madison
12/20/18, 55 by #5 Maryland

OVERTIME GAMES

OT Game Played:3/9/18 at Drexel (L, 58-53)
2OT Game Played:11/25/17 vs. Saint Peter's (L, 90-87)

MISCELLANEOUS

Won after trailing at half:2/3/18 at Elon (31-30 -- W, 74-63)
Lost after leading at half:1/21/18 at Elon (27-23-- L, 64-51)

THE LAST TIME A UD PLAYER...

SCORING

Scored 25-29 points:1/25/19, Samone DeFreese (26 vs. UNCW)
Opponent scored 25-29 points:11/16/18, Claire Lundberg (28, Montana State)
Scored 30-39 points:2/15/19, Samone DeFreese (31 vs. Northeastern)
Opponent scored 30-39 points:12/7/15, Hannah Jardine (31 at George Mason)
Scored 40-49 points:1/20/19, Jess Genco (32, Northeastern)
Opponent scored 40-49 points:2/26/12, Elena Delle Donne (42 at Hofstra)
Scored 50+ points:2/26/15, Brie Mobley (46, UNCW)

REBOUNDING

Grabbed 10 rebounds:2/3/19, Samone DeFreese (12 at Elon)
Opponent grabbed 10 rebounds:1/13/19, Aubree Brown (10, Drexel)
Grabbed 15 rebounds:11/23/18, Jasmine Dickey (18 vs. Bradley)
Opponent grabbed 15 rebounds:1/4/19, Kayla Cooper-Williams (18, James Madison)
Grabbed 20 rebounds:12/22/17, Nicole Enabosi (20 vs. Loyola)

MISCELLANEOUS

Had 5 blocked shots:12/18/18, Rebecca Lawrence (5 vs. Gardner-Webb)
Had 10 assists:11/19/17, Abby Gonzales (10 vs. Boston University)
Had a double-double:2/3/19, Samone DeFreese (16/12 at Elon)
Opponent had a double-double:1/13/19, Aubree Brown (12/10, Drexel)

DELAWARE TO HOST 2019 CAA TOURNAMENT AT BOB CARPENTER CENTER

The CAA Women's Basketball Championship returns to the Bob Carpenter Center for the first time since 2008 with competition being held March 13-16. The tournament was held on campuses prior 2010 before moving to the Show Place Arena in 2011, where it entertained fans for five seasons. James Madison University hosted the tournament in 2017 while Drexel University hosted in 2018.

MAKEDA NICHOLAS CLIMBING CAREER CHARTS

Nearly 11 months after seeing the court for the Blue Hens due to injury, **Makeda Nicholas** returned to the floor against Northern Iowa in her final year of eligibility. Nicholas graduated in May from UD with a Bachelor of Arts degree in psychology and is currently studying to obtain a Master of Arts degree in education. The forward is currently fourth in the Delaware career record books with 157 blocks, tied for 10th with 119 games played, 16th all-time with 648 rebounds and 40th overall with 762 points.

JASMINE DICKEY - A FIVE-TIME CAA ROOKIE OF THE WEEK HONOREE

In her first season as a collegiate student-athlete, **Jasmine Dickey** was named the CAA Rookie of the Week for the first three weeks possible and added two more awards on Dec. 31 and Jan. 21 for a total of five weekly honors. **Nicole Enabosi** captured four Rookie of the Week honors during the 2015-16 season while **Elena Delle Donne** was named the CAA Rookie of the Week 10 times during the 2009-10 campaign.

MATT JANUS NAMED NMSA DELAWARE SPORTSCASTER OF THE YEAR

For the third time in his career and second straight year, the National Sports Media Association has named Blue Hens broadcaster **Matt Janus** as the Delaware Sportscaster of the Year. The 2007 University of Delaware graduate is in the midst of his 10th campaign calling Blue Hens women's basketball on Fox Sports 1290 AM and 1410 WDOV, and his seventh as the team's primary play-by-play voice. Janus also does television work on both football and basketball broadcasts for the CAA and BIG EAST.

TYRESA SMITH '07 INDUCTED INTO DELAWARE BASKETBALL HALL OF FAME

The Blue Hens had their ninth and 10th representatives inducted into the Delaware Basketball Hall of Fame in January as **Tyresa Smith '07** joined men's basketball alum **Pete Cloud '64** as 2019 honorees. A native of Dover and 2003 graduate from Polytech High, Smith was the first University of Delaware women's basketball player to be drafted by the WNBA when she was picked 18th overall by the Phoenix Mercury in 2007. A two-time CAA Defensive Player of the Year honoree and the first Delaware player to earn All-Region accolades, Smith holds the school record with 342 career steals and is third on the Blue Hens all-time scoring list with 1,635 points and fifth with 307 assists. Smith led the Hens to 92 wins, 55 Colonial Athletic Association victories and three postseason appearances, including a trip to the 2007 NCAA Tournament. **Sarah Gause** is the lone other Blue Hens women's basketball player to be recognized as she was inducted in 2010. The Delaware Basketball Hall of Fame was founded in 2007 by the Delaware Interscholastic Basketball Coaches Association.

BLUE HENS IN THE COLONIAL ATHLETIC ASSOCIATION

Delaware is 209-105 (.666) all-time in CAA regular season play with a 25-16 (.610) mark in the CAA Tournament and two conference titles (2012, 2013). Head coach **Natasha Adair**, who spent one season in the CAA at the College of Charleston is 25-19 against CAA foes.

DELAWARE VS. FIRST-TIME OPPONENTS

Through the first 10 games of the season, the Blue Hens faced five first-time opponents. Prior to this year, UD had never matched up against Northern Iowa, Montana State, Nicholls, UCF or Gardner-Webb.

BLUE HENS PILE ON FREQUENT FLYER MILES

From November 8 to December 6, the Blue Hens played eight straight games on the road to open the season. In total, Delaware took 12 flights, visited seven different airports and logged approximately 9,700 miles round-trip by air and bus.

BLUE HEN HELPERS

Delaware's 26 assists at Delaware State on November 20 is good to tie for sixth in program single-game history and is the most for the Hens since posting 27 against Delaware State on December 10, 1992. UD's all-time record is 28 assists versus Drexel (February 8, 1992) and Kent State (November 24, 1989). Most recently, the Hens dished out 24 assists against Boston University on November 19, 2017.

SCORING MACHINE VS. DELAWARE STATE

UD's 85 points at Delaware State (November 20) is the most in regulation for the Blue Hens since an 85-71 victory over the College of Charleston on February 14, 2014.

LEFFT COMES UP BIG AT DELAWARE STATE

The biggest spark of the night against the Hornets may have been provided by Gadson Lefft. The redshirt senior scored her first career points in a Blue Hens uniform and finished the night with 15 points on 6-of-7 shooting from the field and a mark of 3-for-3 from the charity stripe. Lefft added a career-high six rebounds, two assists and two steals in 16 minutes of action. Additionally, nine straight points from the forward in the third turned the tides as Delaware (2-2) took the lead and never looked back in the win.

JASMINE DICKEY SHINES IN BLUE HENS DEBUT

Jasmine Dickey logged 21 points and 12 rebounds in the first round of the Preseason WNIT at Northern Iowa and joined rare company with her stat line. The Baltimore, Md. native is the first Delaware freshman since **Nicole Enabosi** (2015) to post a double double in her collegiate debut and scored the most points in a season opener for the Blue Hens since **Elena Delle Donne** collected 33 in 2011. Additionally, Dickey is the first Delaware freshman to post 20-plus points in her collegiate debut since **Anette Percy** registered 21 points in 1994 and is believed to be the first Hen to record 20-plus points and 10-plus rebounds in her first-ever game at UD.

BLUE HENS ADD AGNES PAUL AND BRYNN WADE FOR 2019-20 CAMPAIGN

Natasha Adair excitedly announced November 16 that **Agnes Paul** and **Brynn Wade** have signed National Letters of Intent to play for the Blue Hens beginning in 2019-20. Paul, a 6-2 power forward from Bowie, Md. led New Hope Academy to a 18-13 record and a NACA runner-up finish under head coach Sam Caldwell a year ago. As a junior, Paul led NHA with 240 rebounds and was named to the NACA All-Tournament Team. She is a member of Team Durant AAU squad and also the Nigerian 17U National Team. Wade will join the Blue Hens from Gilbert, Ariz. where she is a 6-1 power forward for head coach Kyle Pedersen at Gilbert High School. She also played at La Cueva High and Hope Christian High in New Mexico and is a member of the New Mexico Heat Elite and Arizona Select AAU teams. "We are more than excited to welcome Agnes and Brynn into the Blue Hens family," Adair commented. "Both are tireless workers and flat out tough players. The future is bright for both Agnes and Brynn and I cannot wait to see them don that Delaware uniform next season."

FRESH FACES

Delaware welcomes three newcomers to the team while graduating three seniors from last season. Freshmen **Lolo Davenport**, **Jasmine Dickey** and **Paris McBride** join the Hens from successful high school campaigns. Following their NLI signings, head coach **Natasha Adair** stated: "I'm really thrilled with this class. My first recruiting class at the University of Delaware has really shaped out to be a big one. We are signing some of the top players in the country, but the most important thing is that they are all character-first people. And that's a big reason why they're here. They fit into what we're doing, they fit the chemistry of our current players and they'll also help take us to the next level."

BLUE HENS WITHOUT CAA PLAYER OF THE YEAR; TOP RECRUIT

The Blue Hens were dealt a blow to the roster during the offseason as **Nicole Enabosi**, the 2018 CAA Player of the Year, and incoming freshman **Lolo Davenport** underwent surgery for ACL injuries. Both will return for Delaware during the 2019-20 campaign.

NOTABLES

DOUBLE DOUBLES	SEASON	CAREER
Samone DeFreese	2	8
Jasmine Dickey	5	5
Nicole Enabosi		44
Rebecca Lawrence	1	1
Makeda Nicholas		5

DOUBLE-FIGURE PTS.	SEASON	CAREER
Samone DeFreese	10	28
Jasmine Dickey	7	7
Nicole Enabosi		64
Abby Gonzales	8	20
Bailey Kargo	5	16
Rebecca Lawrence	3	5
Gadson Lefft	2	2
Alison Lewis	2	2
Paris McBride	3	3
Makeda Nicholas	8	26
Lizzie Oleary	1	3

20-PT. GAMES	SEASON	CAREER
Samone DeFreese	3	4
Jasmine Dickey	1	1
Nicole Enabosi		17
Abby Gonzales	2	2
Bailey Kargo	1	2

30-PT. GAMES	SEASON	CAREER
Samone DeFreese	1	1

DOUBLE-FIGURE REB.	SEASON	CAREER
Samone DeFreese	2	9
Jasmine Dickey	9	9
Nicole Enabosi		47
Rebecca Lawrence	1	2
Alison Lewis		1
Makeda Nicholas	3	14

20-REB. GAMES	SEASON	CAREER
Nicole Enabosi		1

CAA/NCAA RANKINGS

Category	CAA	NCAA
Scoring Offense	61.0	8
Scoring Defense	61.9	3
Scoring Margin	-0.9	7
FT %	.648	8
FG %	.374	10
FG % Def.	.365	3
3FG/Game	3.5	10
3FG %	.303	8
3FG % Def.	.300	4
Rebounds	41.0	3
Rebounds (Opp)	40.6	10
Rebounding Margin	+0.5	5
Blocks	4.7	3
Assists	13.4	4
Steals	8.9	3
Turnover Margin	+1.35	3
Assist/TO Ratio	0.8	5
Win/Loss %	.478	7

RANKED UD PLAYERS

Category	CAA	NCAA
Scoring	10.9	Samone DeFreese 14
	9.0	Abby Gonzales 24
	8.3	Makeda Nicholas 28
Rebounding	8.7	Jasmine Dickey 2
	6.8	Samone DeFreese 7
	6.0	Makeda Nicholas 10
FG%	.423	Samone DeFreese 12
Assists	3.1	Paris McBride 9
	2.9	Abby Gonzales 12
FT%		
Steals	1.5	Jasmine Dickey 11
	1.4	Abby Gonzales 12
3FG%	.362	Bailey Kargo 9
	.361	Abby Gonzales 10
3FG Made	1.9	Abby Gonzales 8
Blocks	1.6	Rebecca Lawrence 3
	1.5	Makeda Nicholas 5
	0.9	Jasmine Dickey 8
A/TO Ratio	1.3	Paris McBride 5
Off Reb	3.0	Jasmine Dickey 4
	2.3	Samone DeFreese 12
Def Reb	5.7	Jasmine Dickey 3
	4.4	Samone DeFreese 7
	4.3	Makeda Nicholas 8
Minutes	32.4	Abby Gonzales 10

To be ranked, player must appear in at least 75% of their team's games

DELAWARE STREAKIN'

Current Streak: W1
Longest Win Streak: W4
Longest Losing Streak: L3

Current Home Streak: W3
Longest Home Win Streak: W3
Longest Home Losing Streak: L3

Current Road/Neutral Streak: L1
Longest Road/Neutral Win Streak: W2
Longest Road/Neutral Losing Streak: L2

HEAD COACH NATASHA ADAIR



30-25 (.545)
First Season at Delaware
102-110 (.481)
Seventh Season Overall
South Florida '94



PLAYING CAREER

1990-92.....Pensacola Junior College.....Two state championships
Led team in rebounding
 1992-94.....University of South Florida.....Single-season rebounding record

COACHING CAREER

1998-04.....Georgetown University.....Assistant Coach
Averaged 15 wins per season
Four WNIT appearances
 2004-07.....Wake Forest University.....Assistant Coach
Averaged 13 wins per season
One WNIT appearance
 2007-12.....Wake Forest University.....Associate Head Coach
Averaged 17 wins per season
Three WNIT appearances

HEAD COACHING TENURE

YEAR	RECORD	CONFERENCE	HIGHLIGHTS
College of Charleston			
2012-13.....	16-16.....	11-9 (SoCon).....	Postseason WBI (1-1)
2013-14.....	19-15.....	9-7 (CAA).....	Postseason WBI (2-1)
CofC TOTAL 35-31.....20-16..... Two WBI appearances			
Georgetown University			
2014-15.....	4-27.....	2-16 (BIG EAST)...	
2015-16.....	16-14.....	9-9.....	Postseason WNIT (0-1)
2016-17.....	17-13.....	9-9.....	Postseason WNIT (0-1)
GU TOTAL 37-54.....20-34..... Two WNIT appearances			
University of Delaware			
2017-18.....	19-14.....	11-7 (CAA).....	Postseason WNIT (0-1)
2018-19.....	11-12.....	6-5.....	
UD TOTAL 30-25 17-12 One WNIT appearance			
CAREER..... 102-110.....26-19 (CAA)			

Natasha Adair was selected as just the fourth women's basketball head coach in the program's illustrious history on May 14, 2017.

In her first season with the Blue Hens, Adair guided Delaware to its most wins (19) and first postseason appearance since the 2013-14 campaign. Additionally, the Hens captured 10 conference victories for the first time since 2012-13.

Under Adair, the Blue Hens were an offensive threat as Delaware averaged its most points (65.8) since 2012-13. Additionally, the Hens logged 80-plus points in six different contests for the first time in six seasons while logging five straight games of 70-plus points to open the year while UD only reached 70-plus points three times in each of the previous two seasons.

Delaware also saw the fifth player in program history pick up Conference Player of the Year accolades as forward Nicole Enabosi earned the Colonial Athletic Association's top individual award while also garnering CAA All-First Team and All-Defensive Team honors for the second straight season. Enabosi finished her junior year by overtaking the Blue Hens single-season records in rebounds (375) and double-doubles (23) while her name is littered among the Delaware single-season Top 10 for points, points per game, rebounds per game, blocked shots, field goals made, field goal percentage, free throws made and free throws attempted.

Adair, who has more than 20 years of coaching experience under her belt, has received the national attention of USA Basketball and currently serves as an assistant coach for the U18 Women's National Basketball Team and has spoken at the USA Basketball Las Vegas Coach Academy. Additionally, Adair served as a U19 Women's World Cup Team Trials Court Coach during the summer of 2017.

Adair joined the Blue Hens from Georgetown University, where she turned around a four-win Hoya program to a postseason contender in three seasons as head coach. Behind Adair's leadership, GU finished 2016-17 with a 17-13 record, the most wins for the Hoyas since 2011-12, and garnered the team's second straight trip to the Postseason WNIT.

The Silver Spring, Md. native is no stranger to the Colonial Athletic Association as her first head coaching stint took her to the College of Charleston, where she was 35-31 overall. In the Cougars' first season in the CAA in 2013-14, Adair guided The College to record of 19-15, marking the third-highest win total in the school's Division I era. Additionally, the squad finished third in conference play, defeated five postseason teams from the previous year and advanced to the semifinals of both the CAA Championship and the Women's Basketball invitational.

Adair played collegiately at Pensacola Junior College (1990-92) before playing and graduating from the University of South Florida with a degree in communications in 1994. She previously spent 13 seasons in the assistant coaching ranks, with seven years (2004-12) at Wake Forest University and six seasons (1998-04) at Georgetown University. Her coaching career has seen her develop and mentor 12 players who went on to play at the professional level.



BOB CLARK
Associate Head Coach



SARAH JENKINS
Assistant Coach



MYKALA WALKER
Assistant Coach



ADRIENNE EISENHAUER
Director of Operations



DAVID WHITE
Asst. Director of Ops

#0 GADSON LEFFT

Senior | Forward/Guard | 6-0 | History
Lake Wylie, S.C. | Heathwood Hall | Clemson

CAREER STATISTICS (at Delaware)

			Total		3-Point		F-Throws		Rebounds											Scoring	
Season	gp-gs	min/avg	fg-fga	pct	fg-fga	pct	ft-fa	pct	off	def	tot	avg	pf	fo	ast	to	blk	stl	pts	avg	
2018-19	12-1	108/9.0	19-36	.528	0-0	.000	13-22	.591	23	34	57	4.8	21	1	4	3	5	7	51	4.3	
TOTAL	12-1	108/9.0	19-36	.528	0-0	.000	13-22	.591	23	34	57	4.8	21	1	4	3	5	7	51	4.3	

- » Born June 9, 1996 in Columbia, S.C.
- » Nickname is 'Gaddy'
- » Daughter of Ricky and Benita Lefft; has two siblings, Evan and Alexis
- » Father is a lawyer for The Lefft Law Group, LLC, and specializes in the representation of college coaches and athletics directors as well as educational institutions; also a professor and member of the Alumni Board of Governors at his alma mater, the University of South Carolina
- » Uncle, Gerald Harrison, Jr., became the athletics director at Austin Peay in July 2018
- » Averaged 2.6 rebounds and 2.2 points in 21 games at Clemson before transferring to Delaware following the 2015-16 campaign
- » Scored first career points in a UD uniform at Delaware State (Nov. 20) and finished game with 15 points
- » Earned first career start against Lafayette (Nov. 24)
- » Has been sidelined by an injured achilles

SEASON/CAREER HIGHS

Season	Career (at Delaware)
Points:	15 at Delaware State, 11/20
FG:	6 at Delaware State, 11/20
FGA:	8 vs. Bradley, 11/23
3FG:	
3FGA:	
FT:	5 vs. Towson, 1/6
FTA:	8 vs. Towson, 1/6
Reb.:	8 vs. Lafayette, 11/24
Assists:	2, 2x, last vs. Saint Joseph's, 12/28
Blocks:	1, 5x, last vs. Northeastern, 2/16
Steals:	2 at Delaware State, 11/20
Min:	16 at Delaware State, 11/20

COACH ADAIR SAYS:

- » Blue-collar worker
- » True team player
- » Energy and enthusiasm is extremely contagious
- » Tough inside and has range past 17'
- » Important leader

#1 LOLO DAVENPORT

Freshman | Guard/Forward | 6-1 | Sociology Education
Plano, Texas | Plano Senior High | Proskills GEYBL

CAREER STATISTICS

- » Born October 19, 1999 in Dallas, Texas
- » Daughter of Bruce Davenport and Glenda Monette-Davenport
- » Has three siblings, Bruce Jr., Samuel and Mariah
- » Cousin, Alana Beard, was the 2017 and 2018 WNBA Defensive Player of the Year for the Los Angeles Sparks
- » Led Plano Senior High School to the first girls basketball state championship in school history as a senior (2018) for head coach Rodney Belcher
- » Named the 2018 UIL 6A State Tournament MVP; also earned UIL 6A All-State First Team honors
- » Helped guide the Wildcats to an overall record of 35-6 during senior campaign; team was ranked 11th nationally and second in Texas
- » Averaged 23 points, nine rebounds, four assists and one block per game as a senior
- » Will miss the 2018-19 season following ACL surgery

SEASON/CAREER HIGHS

Season	Career
Points:	
FG:	
FGA:	
3FG:	
3FGA:	
FT:	
FTA:	
Reb.:	
Assists:	
Blocks:	
Steals:	
Minutes:	

COACH ADAIR SAYS:

- » Brings a high-major skillset to program
- » Versatile; could play all 5 spots
- » Ability to score, defend and rebound makes her a tough player
- » Is a WINNER!

#2 ABBY GONZALES

Junior | Guard | 5-7 | Early Childhood Education
Wexford, Pa. | North Allegheny | WPA Bruins

CAREER STATISTICS

Season	gp-gs	min/avg	Total		3-Point		F-Throws		Rebounds				Scoring							
			fg-fga	pct	fg-fga	pct	ft-fa	pct	off	def	tot	avg	pf	fo	ast	to	blk	stl	pts	avg
2016-17	30-22	855/28.5	50-179	.279	29-96	.302	15-24	.625	11	51	62	2.1	42	0	60	58	6	20	144	4.8
2017-18	31-31	1008/32.5	97-276	.351	39-127	.307	34-47	.723	14	94	108	3.5	62	0	125	94	3	45	267	8.6
2018-19	23-23	745/32.4	67-195	.344	44-122	.361	30-38	.789	10	49	59	2.6	44	1	67	53	2	32	208	9.0
TOTAL	84-76	2608/31.0	214-650	.329	112-345	.325	79-109	.725	35	194	229	2.7	148	1	252	205	11	97	619	7.4

- » Born May 17, 1998; daughter of Paulette and Andrew Gonzales; has two siblings, Jeremy and Evie; father played football at Duquesne, while brother played for Pitt
- » Led North Allegheny HS to a mark of 94-16 over four seasons; 1,000 point scorer for the Tigers; 2015-16 Female Senior Athlete of the Year; Guided NAHS to three straight PIAA quarterfinals appearances, including a trip to the 2014 and 2016 semifinals; Four-time Class 4A All-Conference selection; three-time team captain for head coach Spencer Steffko
- » First player in 18 years to register at least 10 assists in a single game (Christine Koren '00 at Lafayette, 11/29/99)
- » Blue Hens active career leader with 252 assists (16th all-time)
- » Eighth in program history with 112 career 3-point field goals made and tied for sixth 345 3-point field goal attempts; 11th with .325 3fg%
- » Student-teacher at McVey Elementary (fourth grade; Spring 2019); also taught at Newark Charter (second grade; Fall 2018)

SEASON/CAREER HIGHS

Season	Career
Points:	21 at Delaware State, 11/20
FG:	7, 2x, last at Delaware State, 11/20
FGA:	15 at Delaware State, 11/20
3FG:	5 at Delaware State, 11/20
3FGA:	10, 2x, last at Delaware State, 11/20
FT:	5 vs. UCF, 12/9
FTA:	7 vs. UCF, 12/9
Reb.:	6, 2x, last vs. Saint Joseph's, 12/28
Assists:	8 at Delaware State, 11/20
Blocks:	1, 2x, last at George Mason, 12/7
Steals:	4 at Hofstra, 1/18
Min:	38 at Boston Univ., 12/2

COACH ADAIR SAYS:

- » Floor general; we go as Abby goes
- » Steady, fearless, tough
- » Will hold scoring role rather than facilitator
- » Has range from 3, IQ and ability to play off the bounce

#4 PARIS MCBRIDE

Freshman | Guard | 5-4 | University Studies
Woodbridge, Va. | Woodbridge | Team Takeover EYBL

COACH ADAIR SAYS:

- » Feisty, competitive nature
- » Great court vision
- » Ability to change speeds and get to rim will create scoring options
- » Relentless on-ball defender

CAREER STATISTICS

			Total		3-Point		F-Throws		Rebounds										Scoring	
Season	gp-gs	min/avg	fg-fga	pct	fg-fga	pct	ft-fa	pct	off	def	tot	avg	pf	fo	ast	to	blk	stl	pts	avg
2018-19	23-5	515/22.4	36-132	.273	4-33	.121	37-53	.698	9	31	40	1.7	52	1	71	56	0	27	113	4.9
TOTAL	23-5	515/22.4	36-132	.273	4-33	.121	37-53	.698	9	31	40	1.7	52	1	71	56	0	27	113	4.9

- » Born October 22, 1999 in Fairfax, Va.
- » Daughter of Denise Miles and James McBride
- » Has three siblings, Brittny, Alexis and Kennede
- » Led Woodbridge HS to an overall record of 85-24 under head coach Tamika Dudley
- » Finished career with 1,085 points
- » 2018 Conference Player of the Year
- » First Team All-Region; Two-time First Team All-State selection; Three-time First Team All-Conference selection; Second Team All-Met
- » Helped guide the Vikings to the conference and regional championship as a senior; regional championship MVP
- » Will face former AAU teammates Kayla Liles (Elon) and Elayna Birch-Smith (Delaware State) this season

SEASON/CAREER HIGHS

Season	Career
Points: 14 vs. Northeastern, 2/16	19 at Hofstra, 1/19/17
FG: 5 vs. Charleston, 1/27	8, 3x, last at Boston Univ., 12/2/18
FGA: 12, 2x, last vs. Towson, 1/6	18 vs. Towson, 1/6
3FG: 1, 4x, last vs. Charleston, 1/27	1, 4x, last vs. UNCW, 2/3/17
3FGA: 4 at Delaware State, 11/20	3, 2x, last vs. NDSU, 11/29/25
FT: 14 vs. Northeastern, 2/16	9 at Buffalo, 11/10/17
FTA: 16 vs. Northeastern, 2/16	17, 2x, last vs. Drexel, 1/22/16
Reb.: 4, 2x, last vs. Northeastern, 2/16	6 vs. Hofstra, 2/12/17
Assists: 7 at Delaware State, 11/20	6 at Northeastern, 2/17/17
Blocks: 3, 2x, last at William & Mary, 2/1	3, 6x, last at Delaware State, 11/20/18
Steals: 3, 2x, last at William & Mary, 2/1	46 vs. Elon, 2/7/16
Min: 35 vs. Nicholls, 11/17	

#5 MAKEDA NICHOLAS

Graduate Student | Forward | 6-1 | M.A. Education
North Babylon, N.Y. | North Babylon

COACH ADAIR SAYS:

- » Leadership will be vital
- » Will make immediate impact on both ends
- » Ability to score around rim and from mid-range makes her versatile and hard to guard

CAREER STATISTICS

Season	gp-gs		min/avg	fg-fga		pct	fg-fga		pct	ft-fita		pct	off	def	tot	avg	pf	fo	ast	to	blk	stl	pts	avg
2014-15	32-20	614/19.2		57-184	.310		0-0	.000		30-58	.517		46	117	163	5.1	54	0	24	56	30	25	144	4.5
2015-16	31-21	683/22.0		61-212	.288		3-15	.200		38-54	.704		62	123	185	6.0	46	1	31	54	37	20	163	5.3
2016-17	30-28	868/28.9		89-236	.377		1-4	.250		49-68	.721		46	106	152	5.1	58	1	51	74	51	31	228	7.6
2017-18	4-3	91/22.8		18-42	.429		0-3	.000		9-15	.600		4	13	17	4.3	14	1	9	19	7	3	45	11.3
2018-19	22-12	527/24.0		75-200	.375		0-3	.000		32-53	.604		37	94	131	6.0	56	2	29	42	32	23	182	8.3
TOTAL	119-84	2783/23.4		300-874	.343		4-25	.160		158-248	.637		195	453	648	5.4	228	5	144	245	157	102	762	6.4

- » First name pronounced 'mac-KAY-duh'
- » Born September 5, 1996
- » Daughter of Antonette and Orlando Nicholas; has one brother, Joshua
- » First Team All-State, All-League, All-County, All-Long Island and All-Conference selection; averaged 17.1 points, 10 rebounds and seven blocks per game under head coach Debbie Bradjevich at North Babylon
- » First player in program history to record back-to-back 17 rebound games (Jan. 17, 2016 vs. Towson; Jan. 22, 2016 vs. Drexel)
- » Has one year of eligibility remaining in 2018-19 after missing majority of senior year with a knee injury
- » Graduated in May 2018 with a Bachelor of Arts degree in psychology
- » Fourth in program history with 157 career blocks; 16th with 648 rebounds; 40th with 762 points
- » Active career leader with 119 games played (tied for 10th all-time)

SEASON/CAREER HIGHS

Season	Career
Points: 18 at Boston Univ., 12/2	19 at Hofstra, 1/19/17
FG: 8 at Boston Univ., 12/2	8, 3x, last at Boston Univ., 12/2/18
FGA: 18 vs. Towson, 1/6	18 vs. Towson, 1/6
3FG: 2 vs. Lafayette, 11/24	1, 4x, last vs. UNCW, 2/3/17
3FGA: 4, 2x, last at William & Mary, 2/16	3, 2x, last vs. NDSU, 11/29/25
FT: 8 vs. Northeastern, 2/16	9 at Buffalo, 11/10/17
FTA: 11, 2x, last vs. Drexel, 1/13	17, 2x, last vs. Drexel, 1/22/16
Assists: 4 at Hofstra, 1/18	6 vs. Hofstra, 2/12/17
Blocks: 5 at George Mason, 12/7	6 at Northeastern, 2/17/17
Steals: 3 at Delaware State, 11/20	3, 6x, last at Delaware State, 11/20/18
Min: 33, 2x, last vs. Drexel, 1/13	46 vs. Elon, 2/7/16

#12 LIZZIE OLEARY

Sophomore | Forward | 6-2 | Hospitality Industry Management
Willow Grove, Pa. | Abington Senior | Philadelphia Comets

COACH ADAIR SAYS:

- » Very high basketball IQ; basketball savvy
- » Glue player that is fundamentally sound
- » Can score inside and out
- » Physical on glass; great screener and passer

CAREER STATISTICS

			Total		3-Point		F-Throws		Rebounds											Scoring	
Season	gp-gs	min/avg	fg-fga	pct	fg-fga	pct	ft-fa	pct	off	def	tot	avg	pf	fo	ast	to	blk	stl	pts	avg	
2017-18	32-0	499/15.6	50-103	.485	1-4	.250	29-40	.725	31	58	89	2.8	56	1	18	33	17	10	130	4.1	
2018-19	23-7	260/11.3	24-57	.421	0-0	.000	10-20	.500	23	37	60	2.6	53	1	11	30	5	9	58	2.5	
TOTAL	55-7	759/13.8	74-160	.463	1-4	.250	39-60	.650	54	95	149	2.7	109	2	29	63	22	19	188	3.4	

- » Born October 14, 1998 in Agana Heights, Guam
- » Daughter of Tim and Martha O'Leary; oldest of three siblings
- » Led Abington HS to three 20-win seasons and two district title games, including the 2017 District One 6A title under head coach Dan Marsh
- » Surpassed the 1,000-point mark and averaged 13.9 points, 10.2 rebounds, 2.6 assists and 2.5 blocks per game as a senior
- » 2017 All-Intelligencer Girls Basketball Player of the Year and Sports Writers Pennsylvania All-State Second Team; Three-time First Team All-League; Two-time team captain
- » Previously played the 2013-14 season at Archbishop Wood, where she led the team to the District 12 Championship and Philadelphia Catholic League and Pennsylvania State Finals
- » 2017-18 CAA All-Rookie Team; Team Sixth Woman of the Year

SEASON/CAREER HIGHS

Season	Career
Points: 10 at William & Mary, 2/1	13 at Elon, 1/21/18
FG: 4 at William & Mary, 2/1	6 at Elon, 1/21/18
FGA: 5, 2x, last vs. Northeastern, 2/16	9 at Elon, 1/21/18
3FG: 1 at Elon, 1/21/18	
3FGA: 2 vs. Towson, 1/14/18	
FT: 3 vs. Charleston, 1/27	4, 2x, last vs. Drexel, 3/1/18
FTA: 4, 2x, last at William & Mary, 2/1	4, 8x, last at William & Mary, 2/1/19
Reb.: 8 at Drexel, 2/8	8 at Drexel, 2/8/19
Assists: 2, 3x, last at William & Mary, 2/12	4x, last at William & Mary, 2/1/19
Blocks: 2 at Northern Iowa, 11/9	3 at Georgetown, 3/16/18
Steals: 1, 9x, last vs. Northeastern, 2/16	3 vs. William & Mary, 2/9/18
Min.: 25 at Northeastern, 1/20	25, 3x, last at Northeastern, 1/20/19

#20 JASMINE DICKEY

Freshman | Guard/Forward | 5-10 | University Studies
Baltimore, Md. | Catonsville | MD Lady Tigers

COACH ADAIR SAYS:

- » A true warrior
- » Brings a next level of competitiveness
- » Ability to rebound and run helps create high-paced tempo
- » Lock-down defender
- » Star in the making

CAREER STATISTICS

Season	gp-gs	min/avg	Total		3-Point		F-Throws		Rebounds											Scoring	
			fg-fga	pct	fg-fga	pct	ft-fa	pct	off	def	tot	avg	pf	fo	ast	to	blk	stl	pts	avg	
2018-19	20-14	542/27.1	59-182	.324	0-1	.000	41-70	.586	60	113	173	8.7	61	3	16	49	18	29	159	8.0	
TOTAL	20-14	542/27.1	59-182	.324	0-1	.000	41-70	.586	60	113	173	8.7	61	3	16	49	18	29	159	8.0	

- » Born February 23, 2000 in Baltimore, Md.; daughter of Nikisha and Brian Dickey; two younger siblings, Brian and Ashley
- » Led Catonsville HS to an overall record of 93-14 under head coach Mike Mohler
- » Guided the Comets to the 2017 Maryland Class 4A State Championship title and the 2018 Maryland Class 4A State Championship game
- » All-time leading scorer in Baltimore County with 2,091 career points
- » Two-time Maryland Ms. Basketball (2017, 2018); 2018 Baltimore Sun All-Metro Player of the Year; Catonsville Times Female Athlete of the Year
- » Averaged 20.1 points, 10.8 rebounds, 4.4 steals, 3.8 assists and 1.3 blocks per contest as a senior; posted 72.0 free throw percentage
- » Logged 35 points and 28 rebounds in Comets' sectional semifinals win
- » Collected 20 points, 13 rebounds and 10 steals to claim Catonsville's third Baltimore County championship in 2018
- » First UD freshman to post 20-plus points in her collegiate debut since Anette Percy registered 21 points in 1994 and is believed to be the first Blue Hen to record 20-plus points and 10-plus rebounds in her first-ever game at Delaware
- » CAA Rookie of the Week (Nov. 12, Nov. 19, Nov. 26, Dec. 31, Jan. 21)
- » Out indefinitely with a broken hand suffered during practice on February 6

SEASON/CAREER HIGHS

Season	Career
Points: 21 at Northern Iowa, 11/9	
FG: 8 at Northern Iowa, 11/9	
FGA: 21 at Northern Iowa, 11/9	
3FG: 1 at Northern Iowa, 11/9	
FT: 7 vs. Charleston, 1/27	
FTA: 8, 2x, last vs. Charleston, 1/27	
Reb.: 18 vs. Bradley, 11/23	
Assists: 2, 4x, last at Hofstra, 1/18	
Blocks: 3 at Northeastern, 1/20	
Steals: 3, 4x, last at Elon, 2/3	
Min: 36 vs. Bradley, 11/23	

#22 SAMONE DeFREESE

Junior | Forward | 6-0 | Pre-Vet Medicine and Animal Biology
Bergenfield, N.J. | Berkshire (Mass.) | New York Gauchos

COACH ADAIR SAYS:

- » Will be a big part of team's offense and defense
- » Capable of taking over a game
- » Rebounding and free throws will be key
- » Junior leader

CAREER STATISTICS

			Total		3-Point		F-Throws		Rebounds											Scoring	
Season	gp-gs	min/avg	fg-fga	pct	fg-fga	pct	ft-fa	pct	off	def	tot	avg	pf	fo	ast	to	blk	stl	pts	avg	
2016-17	12-0	24/2.0	0-8	.000	0-2	.000	2-2	1.000	1	2	3	0.3	5	0	0	1	0	0	2	0.2	
2017-18	32-27	975/30.5	143-322	.444	10-55	.182	66-110	.600	83	153	236	7.4	80	2	60	78	8	40	362	11.3	
2018-19	21-15	570/27.1	90-213	.423	2-12	.167	46-67	.687	49	93	142	6.8	55	3	47	43	1	23	228	10.9	
TOTAL	65-42	1569/24.1	233-543	.429	12-69	.174	114-179	.637	133	248	381	5.9	140	5	107	122	9	63	592	9.1	

- » Born February 27, 1997 in Englewood, N.J.
- » Daughter of Freda Boecherer; older sister, Samantha, was a 1,000-point scorer and two-time All-CAA selection at Northeastern (2012-16)
- » Averaged 17.3 points, 8.6 rebounds, 2.4 assists, 2.2 steals and 1.0 blocks per game in four seasons at Berkshire School in Sheffield, Mass.
- » Earned The Robert A. Powers Award, which recognizes a Berkshire senior who has demonstrated personal growth, loyalty to the school and dependability of performance which has distinguished her career; Also awarded The Herger Trophy, which is awarded to a senior female student who has best exemplified proficiency and sportsmanship in inter-scholastic athletics
- » 2018 CAA All-Tournament Team; Arthur Ashe Jr. Sports Scholar
- » 2018-19 Preseason All-CAA
- » Posted career-high 31 points vs. Northeastern (Feb. 16) - the most for a Blue Hen since December 2015

SEASON/CAREER HIGHS

Season	Career
Points: 31 vs. Northeastern, 2/16	31 vs. Northeastern, 2/16/19
FG: 14 vs. Northeastern, 2/16	14 vs. Northeastern, 2/16/19
FGA: 24 vs. Northeastern, 2/16	24 vs. Northeastern, 2/16/19
3FG: 1, 2x, last at Boston Univ., 12/2	2, 2x, last vs. UNCW, 1/28/18
3FGA: 1, 12x, last at Drexel, 2/8	7 vs. Boston Univ., 11/19/17
FT: 6, 4x, last at Elon, 2/3	6, 4x, last at Elon, 2/3/19
FTA: 8 vs. UCF, 12/9	8, 2x, last vs. UCF, 12/9/18
Reb.: 12 at Elon, 2/3	14 at Elon, 1/21/18
Assists: 6 at Elon, 2/3	7 vs. Boston Univ., 11/19/17
Blocks: 1 vs. UCF, 12/9	2 at William & Mary, 2/23
Steals: 3, 2x, last vs. Lafayette, 11/24	4 vs. Saint Peter's, 11/25/17
Min.: 35 vs. Northeastern, 2/16	45 at Drexel, 3/9/18

#23 BAILEY KARGO

Junior | Guard | 5-10 | Neuroscience
Greensboro, N.C. | Walter Hines Page | Winston-Salem Stealers

COACH ADAIR SAYS:

- » Perimeter threat
- » Has worked tirelessly on ball skills
- » Consistency from 3 and a strong mid-range game will keep the defense honest

CAREER STATISTICS

CUMULATIVE													PER GAME							Scoring	
Season	gp-gs	min/avg	Total		3-Point		F-Throws		Rebounds				Other Stats							pts	avg
			fg-fga	pct	fg-fga	pct	ft-fa	pct	off	def	tot	avg	pf	fo	ast	to	blk	stl			
2016-17	30-8	408/13.6	24-85	.282	12-48	.250	8-12	.667	3	20	23	0.8	27	1	18	32	0	10	68	2.3	
2017-18	32-32	914/28.6	85-244	.348	56-145	.386	34-39	.872	7	19	26	0.8	64	3	51	48	4	26	260	8.1	
2018-19	21-11	406/19.3	52-126	.413	21-58	.362	5-9	.556	5	16	21	1.0	26	0	21	27	3	10	130	6.2	
TOTAL	83-51	1728/20.8	161-455	.354	89-251	.355	47-60	.783	15	55	70	0.8	117	4	90	107	7	46	458	5.5	

- » Born October 31, 1997 in Johnstown, Pa.
- » Daughter of Ray and Kathy Kargo; both are physical therapists; father played basketball at Lebanon Valley (1988-91)
- » Has two younger siblings, Campbell and Reagan
- » Three-time All-Conference pick out of Walter Hines Page HS; second female in school history to register 1,000 career points in just three seasons; 2016 All-Metro 4A Conference Player of the Year; averaged 18.6 points, 3.6 rebounds, 2.0 assists and 1.9 steals as a senior
- » Aspirations of becoming an optometrist
- » Finished 2018 tied for fourth in UD single-season history with 56 3-point field goals made, a mark good for sixth in the CAA
- » 10th in program history with 89 career 3-point field goals made
- » Also sixth all-time with a 35.5 3-point field goal percentage and 13th with 251 3-point field goal attempts

SEASON/CAREER HIGHS

Season	Career
Points: 20 vs. Gardner-Webb, 12/18	21 vs. Elon, 1/5/18
FG: 8 vs. Gardner-Webb, 12/18	8 vs. Gardner-Webb, 12/18/18
FGA: 14 at Northeastern, 1/20	14 at Northeastern, 1/20/19
3FG: 4, 2x, last at Northeastern, 1/20	5 vs. Elon, 1/5/18
3FGA: 10 at Northeastern, 1/20	10 at Northeastern, 1/20/19
FT: 2 at Delaware State, 11/20	4, 2x, last vs. EIU, 11/26/17
FTA: 2, 4x, last at Drexel, 2/8	4, 3x, last vs. EIU, 22/26/17
Reb.: 3, 3x, last vs. UNCW, 1/25	5, 2x, last vs. Northeastern, 3/8/18
Assists: 3, 2x, last at Hofstra, 1/18	4, 2x, last at Princeton, 12/2/17
Blocks: 1, 3x, last at Elon, 2/3	1, 7x, last at Elon, 2/3
Steals: 2, 3x, last vs. Charleston, 1/27	3 at Princeton, 12/2/17
Min.: 28 at Northeastern, 1/20	46 vs. Saint Peter's, 11/25

#25 REBECCA LAWRENCE

Junior | Forward | 6-3 | Exercise Science
Ridgefield, Conn. | Ridgefield | Connecticut Basketball Club

COACH ADAIR SAYS:

» Versatile player with a high-major skill set
» Ability to face up and score around the basket
» Attacks the rim

CAREER STATISTICS

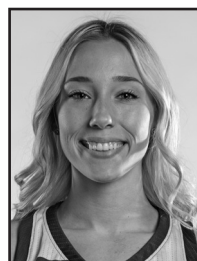
CAREER STATISTICS																			Scoring	
Season	gp-gs min/avg		Total		3-Point		F-Throws		Rebounds									pts	avg	
			fg-fga	pct	fg-fga	pct	ft-fga	pct	off	def	tot	avg	pf	fo	ast	to	blk			stl
2016-17	21-0	127/6.0	7-22	.318	1-2	.500	2-2	1.000	3	6	9	0.4	8	0	3	5	4	1	17	0.8
2017-18	32-29	729/22.8	73-195	.374	3-35	.086	10-12	.833	29	94	123	3.8	50	1	21	24	51	8	159	5.0
2018-19	22-18	450/20.5	52-128	.406	3-16	.188	7-10	.700	35	50	85	3.9	38	2	6	23	36	10	114	5.2
TOTAL	75-47	1306/17.4	132-345	.383	7-53	.132	19-24	.792	67	150	217	2.9	96	3	30	52	91	19	290	3.9

- » Born February 17, 1998
- » Daughter of Judith and Gary Lawrence
- » Has one older brother, Robert
- » Dual citizen in the United States and Britain
- » Two-time CHSCA First Team All-State selection from Ridgefield High School; helped guide the Tigers to the FCIAC Championship and a CIAC state finals appearance as a junior
- » Four-time All-FCIAC honoree; 2015-16 FCIAC Scholar Athlete
- » 2x CAA Academic Honor Roll
- » 2017-18 Team Most Improved Player
- » Logged 14 multi-block games as a sophomore
- » 10th in Delaware career record books with 91 blocked shots
- » Posted first career double double (10p, 11r) vs. Charleston (Jan. 27)

SEASON/CAREER HIGHS

Season	Career
Points: 10, 3x, last at Elon, 2/3	12 vs. William & Mary, 2/9/18
FG: 5, 2x, last vs. Charleston, 1/27	6 vs. William & Mary, 2/9/18
FGA: 12 vs. Charleston, 1/27	12, 2x, last vs. Charleston, 1/27/19
3FG: 2 at Elon, 2/3	2 at Elon, 2/3/19
3FGA: 2, 4x, last at Elon, 2/3	3, 2x, last at William & Mary, 2/23/18
FT: 3 vs. Northeastern, 2/16	3 vs. Northeastern, 2/16/19
FTA: 4 vs. Northeastern, 2/16	4 vs. Northeastern, 2/16/19
Reb.: 11 vs. Charleston, 1/27	11, 2x, last vs. Charleston, 1/27/19
Assists: 1, 6x, last at Drexel, 2/8	3 at William & Mary, 2/23/18
Blocks: 5 vs. Gardner-Webb, 12/18	5, 2x, last vs. Gardner-Webb, 12/18/18
Steals: 2, 3x, last vs. Charleston, 1/27	2, 4x, last vs. Charleston, 1/27/19
Min.: 29 at Northeastern, 1/20	36 vs. Northeastern, 3/8/18

#30 KAYLA SHAW

Redshirt Sophomore | Guard | 5-10 | Communications
Scottsdale, Ariz. | Chaparral | Monmouth

COACH ADAIR SAYS:

» Pure shooter with deep range
» Has ability to break down defender
» True competitor, leader and a winner
» Will be a major scoring option

CAREER STATISTICS

- » Born December 16, 1997 in Phoenix, Ariz.
- » Daughter of Lisa and Larry Shaw
- » Has two older brothers, Brian and Jeff, and a twin brother, Dillon
- » Scored more than 1,200 points for Chaparral High School
- » Led the Firebirds three times to the Sweet 16 of the Arizona State Playoffs, while also guiding CHS to the Elite 8 as a sophomore
- » 2015-16 Sectional Player of the Year; also earned All-Second First Team and All-Division First Team honors
- » Two-time All-State Honorable Mention, All-Division I Section II First and Second Team and two-time All-City performer
- » Transferred to Delaware from Monmouth following sophomore season (2017-18); will be eligible for competition beginning in 2019-20
- » MAAC All-Rookie Team; shattered program record with 93 3-pointers as a freshman
- » Averaged 11.1 points, 1.7 rebounds, 0.9 steals, 0.9 assists for Hawks

SEASON/CAREER HIGHS

Season	Career (at Delaware)
Points:	
FG:	
FGA:	
3FG:	
3FGA:	
FT:	
FTA:	
Reb.:	
Assists:	
Blocks:	
Steals:	
Minutes:	

#33 NICOLE ENABOSI

Senior | Forward | 6-0 | Business Management
Gaithersburg, Md. | Our Lady of Good Counsel

COACH ADAIR SAYS:

» Expected to step up in leadership role
» Will be a coach on the sidelines
» Experience will bode well when she returns from injury next season

CAREER STATISTICS

CAREER STATISTICS			Total		3-Point		F-Throws		Rebounds											Scoring	
Season	gp-gs	min/avg	fg-fga	pct	fg-fga	pct	ft-fta	pct	off	def	tot	avg	pf	fo	ast	to	blk	stl	pts	avg	
2015-16	31-16	798/25.7	91-200	.455	0-0	.000	93-153	.608	69	151	220	7.1	82	1	21	78	33	39	275	8.9	
2016-17	29-29	939/32.4	121-267	.453	1-2	.500	154-212	.726	88	201	289	10.0	81	2	67	90	26	53	397	13.7	
2017-18	32-32	1112/34.8	202-398	.508	2-3	.667	171-242	.707	92	286	378	11.8	108	4	72	100	61	64	577	18.0	
TOTAL	92-77	2849/31.0	414-865	.479	3-5	.600	418-607	.689	249	638	887	9.6	271	7	160	268	120	156	1249	13.6	

- » Born March 26, 1997
- » Daughter of Ora Enabosi; is an only child
- » Within the Top 10 of eight career categories; double doubles (third; 44), rebounds per game (fourth; 9.6), FG% (fifth; .479), FTA (fifth; 607), blocked shots (sixth; 120), FT made (sixth; 418), rebounds (seventh; 887), points per game (seventh; 13.6)
- » Set school-record with eight straight double doubles in 2017-18
- » Set school single-season record with 378 rebounds and 23 double doubles in 2017-18
- » Registered fifth (and first since 1989) 20-20 game in school history with 23 points and 20 rebounds against Loyola (Dec. 22)
- » 2017-18 CAA Player of the Year; CAA All-Defensive Team; UD Outstanding Female Athlete of the Year
- » Trained with the Nigerian National Team in July 2018
- » Will miss 2018-19 season following ACL surgery

SEASON/CAREER HIGHS

Season	Career
Points:	27 vs. Saint Peter's, 11/25/17
FG:	12 vs. Saint Peter's, 11/25/17
FGA:	20 at James Madison, 2/25/18
3FG:	1, 3x, last at Towson, 3/3/18
3FGA:	3 at Hartford, 11/13/17
FT:	13 vs. East Carolina, 11/22/15
FTA:	18 at Hofstra, 1/19/17
Reb.:	20 vs. Loyola, 12/22/17
Assists:	6, 2x, last at Hartford, 11/13/17
Blocks:	7 at Georgetown, 12/10/15
Steals:	5, 2x, last vs. Hofstra, 2/11/18
Min.:	48 vs. Saint Peter's, 11/25/17

#35 ALISON LEWIS

Redshirt Senior | Guard | 5-9 | Environmental Studies & History
Kennett Square, Pa. | Sanford (Del.) | Providence



COACH ADAIR SAYS:

- » Has worked extremely hard in offseason
- » Scoring ability will open floor
- » Explosive on the perimeter
- » One of team's hardest workers

CAREER STATISTICS

		Total		3-Point		F-Throws		Rebounds											Scoring	
Season	gp-gs	min/avg	fg-fga	pct	fg-fga	pct	ft-fa	pct	off	def	tot	avg	pf	fo	ast	to	blk	stl	pts	avg
2017-18	20-0	200/10.0	22-83	.265	0-4	.000	11-18	.611	20	24	44	2.2	14	0	13	22	6	9	55	2.8
2018-19	22-7	325/14.8	44-122	.361	4-9	.444	14-20	.700	27	28	55	2.5	32	0	28	24	4	25	106	4.8
TOTAL	42-7	525/12.5	66-205	.322	4-13	.308	25-38	.658	47	52	99	2.4	46	0	41	46	10	34	161	3.8

- » Born September 9, 1996
- » Daughter of Cathy Lewis and the late Alonzo Lewis
- » Father played basketball at La Salle and was a historic coach in the Philadelphia area that led Chester High School to two state championships before being named the head coach at Cheney; father is a member of the La Salle and Big Five Halls of Fame
- » Guided Sanford (Del.) to the 2014 Delaware State title while putting up 16.8 points, 6.3 rebounds, 3.2 assists and 3.1 steals per game during her senior campaign; recorded 27 points on 12-of-18 shooting in the State Championship game vs. St. Elizabeth's; two-time Delaware First Team All-State honoree
- » Played 27 games in two seasons at Providence before transferring to the University of Delaware
- » Has one year of eligibility remaining in 2018-19

SEASON/CAREER HIGHS

Season	Career (at Delaware)
Points: 17 vs. Gardner-Webb, 12/18	17 vs. Gardner-Webb, 12/18/18
FG: 6 vs. Gardner-Webb, 12/18	6 vs. Gardner-Webb, 12/18/18
FGA: 13 vs. Gardner-Webb, 12/18	15 vs. Northeastern, 1/26/18
3FG: 1, 4x, last at Elon, 2/3	1, 4x, last at Elon, 2/3/19
3FGA: 2, 3x, last at Drexel, 2/8	2, 4x, last at Drexel, 2/8/19
FT: 5 vs. Gardner-Webb, 12/18	5 vs. Gardner-Webb, 12/18/18
FTA: 8 vs. Gardner-Webb, 12/18	8 vs. Gardner-Webb, 12/18/18
Reb.: 8 vs. Gardner-Webb, 12/18	10 at Charleston, 1/17/18
Assists: 4 vs. Gardner-Webb, 12/18	4 vs. Gardner-Webb, 12/18/18
Blocks: 1, 4x, last at Northeastern, 1/20	1, 10x, last at Northeastern, 1/20/19
Steals: 4 vs. UCF, 12/9	4 vs. UCF, 12/9/18
Min.: 37 vs. Gardner-Webb, 12/18	37 vs. Gardner-Webb, 12/18

#44 ERIN ANTOSH

Sophomore | Forward/Center | 6-3 | Marine Science
Townsend, Mass. | Lawrence Academy | MCW Starz



COACH ADAIR SAYS:

- » Has a bright upside
- » Agile on her feet and physical around the rim
- » Shot blocking ability
- » Has a guard skillset at 6-4

CAREER STATISTICS

			Total		3-Point		F-Throws		Rebounds											Scoring	
Season	gp-gs	min/avg	fg-fga	pct	fg-fga	pct	ft-fa	pct	off	def	tot	avg	pf	fo	ast	to	blk	stl	pts	avg	
2017-18	14-0	95/6.8	12-31	.387	1-8	.125	4-8	.500	9	15	24	1.7	21	0	2	7	1	4	29	2.1	
TOTAL	14-0	95/6.8	12-31	.387	1-8	.125	4-8	.500	9	15	24	1.7	21	0	2	7	1	4	29	2.1	

- » Born August 12, 1998 in Concord, Mass.
- » Daughter of Janet Antosh and Kevin Antosh; one older sister, Allison
- » Enjoys art, drawing, painting and scuba diving; figure skated for 15 years
- » Averaged 10.4 points, 8.2 rebounds, 2.8 assists, 2.4 steals and 1.1 blocks per game as a senior at Lawrence Academy under head coach Donna Mastrangelo
- » Led squad to an overall mark of 79-21 (.790) with three semifinals appearances
- » Career 1,000-point scorer
- » Three-time league All-Star; Two-time ISL All-League honoree and team MVP
- » Will miss all of 2018-19 with an ankle injury

SEASON/CAREER HIGHS

Season	Career
Points: 7 vs. Delaware State, 12/10/17	7 vs. Delaware State, 12/10/17
FG: 3, 2x, last at UNCW, 1/19/18	3, 2x, last at UNCW, 1/19/18
FGA: 7, 2x, last vs. Loyola, 12/22/17	7, 2x, last vs. Loyola, 12/22/17
3FG: 1 vs. UNCW, 1/28/18	1 vs. UNCW, 1/28/18
3FGA: 2, 3x, last vs. UNCW, 1/28/18	2, 3x, last vs. UNCW, 1/28/18
FT: 2 at Army West Point, 12/6/17	2 at Army West Point, 12/6/17
FTA: 2, 4x, last at UNCW, 1/19/18	2, 4x, last at UNCW, 1/19/18
Reb.: 6 at UNCW, 1/19/18	6 at UNCW, 1/19/18
Assists: 1 vs. Delaware State, 12/10/17	1 vs. Delaware State, 12/10/17
Blocks: 1 vs. Loyola, 12/22/17	1 vs. Loyola, 12/22/17
Steals: 2 vs. Delaware State, 12/10/17	2 vs. Delaware State, 12/10/17
Min.: 15 vs. Loyola, 12/22/17	15 vs. Loyola, 12/22/17

2018-19 University of Delaware Women's Basketball | Hofstra | February 17

1 Northern Iowa 79, Delaware 67

Friday, November 9, 2018 | McLeod Center | Cedar Falls, Iowa

Delaware 67 • 0-1

#	Player	Total		3-Ptr		Rebounds			PF	TP	A TO Blk Stl				Min
		FG-FGA	FG-FGA	FT-FTA	FT-FTA	Off	Def	Tot							
02	Gonzales, Abby	* 4-11	3-8	1-2	0 3 3	5	12	0 0 0 2	32						
05	Nicholas, Makeda	* 0-3	0-0	1-2	1 6 7	2	1	0 2 1 2	20						
22	DeFreese, Samone	* 6-9	0-1	1-2	2 4 6	3	13	2 3 0 0	32						
24	Mascaro, Justina	* 2-5	0-1	0-0	0 0 0	2	4	1 0 0 1	21						
25	Lawrence, Rebecca	* 1-4	0-1	0-0	1 2 3	0	2	0 1 0 0	11						
00	Leftt, Gadson	0-0	0-0	0-0	0 2 2	3	0	0 0 1 1	6						
04	McBride, Paris	4-12	0-1	2-3	0 1 1	4	10	3 1 0 0	24						
12	Oleary, Lizzie	1-3	0-0	0-0	1 1 2	4	2	0 1 2 1	14						
20	Dickey, Jasmine	8-21	0-1	5-6	4 8 12	2	21	0 1 0 1	29						
35	Lewis, Alison	1-4	0-0	0-0	0 2 2	3	2	1 1 0 0	11						
Team					0 3 3										
Totals		27-72	3-13	10-15	9 32 41	28	67	7 10 4 8	200						
1st FG %: 5-19		26.3%	2nd: 4-20	20.0%	3rd: 9-15	60.0%	4th: 9-18	50.0%	Game: 27-72	37.5%	Deadball				
3FG %: 2-5		40.0%	0-2	0.0%	1-5	20.0%	0-1	0.0%	3-13	23.1%	Rebounds				
FT %: 1-2		50.0%	1-2	50.0%	2-3	66.7%	6-8	75.0%	10-15	66.7%	3				

Northern Iowa 79 • 1-0

#	Player	Total		3-Ptr		Rebounds			PF	TP	A TO Blk Stl				Min
		FG-FGA	FG-FGA	FT-FTA	FT-FTA	Off	Def	Tot							
03	Rucker, Karli	* 8-15	1-1	8-8	1 2 3	2	25	6 1 0 0	34						
10	Howell, Ellie	* 5-9	3-4	2-4	1 7 8	1	15	1 2 0 0	17						
22	Simon-Ressler, Rose	* 1-6	0-2	0-0	0 1 1	2	2	1 1 0 0	26						
32	Hillyard, Heidi	* 0-5	0-2	0-0	1 6 7	3	0	2 1 0 0	24						
50	Maahs, Megan	* 7-13	0-2	3-4	1 9 10	2	17	0 0 2 0	33						
05	Kroeger, Nicole	0-4	0-3	2-2	1 1 2	0	2	0 2 0 0	12						
11	Gunnels, Bre	0-1	0-1	0-0	0 8 8	3	0	0 0 0 0	11						
12	Finley, Kam	0-2	0-1	1-2	0 0 0	1	1	1 0 0 0	6						
30	Wolf, Cynthia	0-0	0-0	0-0	0 0 0	1	0	0 0 0 0	2						
34	Hagen, Taylor	0-1	0-0	2-2	0 0 0	0	2	0 1 0 0	7						
41	Gerrits, Abby	3-5	1-3	8-8	1 1 2	2	15	1 2 0 1	28						
Team					2 3 5										
Totals		24-61	5-19	26-30	8 38 46	17	79	12 10 2 1	200						
1st FG %: 4-12		33.3%	2nd: 6-20	30.0%	3rd: 6-14	42.9%	4th: 8-15	53.3%	Game: 24-61	39.3%	Deadball				
3FG %: 1-6		16.7%	1-5	20.0%	1-3	33.3%	2-5	40.0%	5-19	26.3%	Rebounds				
FT %: 11-12		91.7%	0-0	0.0%	6-6	100.0%	9-12	75.0%	26-30	86.7%	1				

Officials: Scott Doberstein, LaSha Hopson, Scott Fruehling
Technical fouls: Delaware-None. Northern Iowa-None.
Attendance: 1295
Gonzales (Delaware) fouls out with 00:08 remaining in 4th quarter
Preseason WNIT First Round

Score by periods	1st	2nd	3rd	4th	Total						
Delaware	13	9	21	24	67						
Northern Iowa	20	13	19	27	79						

Last FG - DELAWARE 4th-00:02, UNI 4th-01:45.

Score tied - 1 time.

2 Montana State 69, Delaware 60

Friday, November 16, 2018 | Strahan Arena | San Marcos, Texas

Montana State 69 • 1-1

#	Player	Total		3-Ptr		Rebounds			PF	TP	A TO Blk Stl				Min
		FG-FGA	FG-FGA	FT-FTA	FT-FTA	Off	Def	Tot							
14	LUNDBERG, Claire	f 8-13	1-2	11-11	1 5 6	4	28	0 6 0 2	32						
15	KUDERER, Martha	f 7-12	1-3	2-5	3 7 10	4	17	3 5 0 2	35						
33	SMITH, Madeline	f 1-4	0-0	1-2	4 2 6	3	3	1 0 0 0	25						
12	MARTELL, Tori	g 2-8	2-6	2-4	0 3 3	2	8	4 1 0 0	37						
24	SQUIRES, Olana	g 5-16	3-11	0-0	1 1 2	0	13	4 3 0 1	33						
22	HILBORN, Kamden	0-1	0-0	0-0	0 2 2	1	0	0 2 0 1	8						
23	MOCCHI, Gabby	0-1	0-1	0-0	0 0 0	1	0	0 0 0 1	14						
44	BRAXTON, Blaire	0-2	0-0	0-0	2 3 5	1	0	0 2 0 0	16						
Team					2 7 9										
Totals		23-57	7-23	16-22	13 30 43	16	69	14 22 0 11	200						
1st FG %: 9-18		50.0%	2nd: 5-15	33.3%	3rd: 6-17	35.3%	4th: 3-7	42.9%	Game: 23-57	40.4%	Deadball				
3FG %: 3-7		42.9%	1-7	14.3%	2-6	33.3%	1-3	33.3%	7-23	30.4%	Rebounds				
FT %: 1-2		50.0%	0-0	0.0%	2-5	40.0%	11-14	78.6%	16-22	72.7%	3				

Delaware 60 • 0-1

#	Player	Total		3-Ptr		Rebounds			PF	TP	A TO Blk Stl				Min
		FG-FGA	FG-FGA	FT-FTA	FT-FTA	Off	Def	Tot							
05	Nicholas, Makeda	f 3-8	0-0	0-0	0 2 2	1	6	1 2 0 0	18						
22	DeFreese, Samone	f 9-15	1-1	1-3	2 4 6	5	20	2 3 0 3	28						
02	Gonzales, Abby	g 1-7	0-3	2-2	1 2 3	2	4	2 2 1 2	32						
04	McBride, Paris	g 2-7	0-3	0-0	0 2 2	3	4	2 4 0 1	24						
20	Dickey, Jasmine	g 2-8	0-0	4-6	3 8 11	5	8	0 2 0 2	30						
12	Oleary, Lizzie	0-3	0-0	0-0	0 1 1	3	0	1 2 0 1	11						
23	Kargo, Bailey	3-9	1-4	0-0	0 1 1	1	7	1 0 0 0	20						
24	Mascaro, Justina	0-0	0-0	1-2	0 0 0	1	1	0 2 0 0	3						
25	Lawrence, Rebecca	2-4	0-0	0-0	5 2 7	1	4	1 1 1 1	18						
35	Lewis, Alison	3-6	0-0	0-0	0 1 1	0	6	2 2 0 1	16						
Team					3 1 4										
Totals		25-67	2-11	8-13	14 24 38	22	60	12 20 2 11	200						
1st FG %: 4-14		28.6%	2nd: 7-20	35.0%	3rd: 6-12	50.0%	4th: 8-21	38.1%	Game: 25-67	37.3%	Deadball				
3FG %: 1-3		33.3%	0-2	0.0%	0-1	0.0%	1-5	20.0%	7-21	18.2%	Rebounds				
FT %: 1-2		50.0%	1-2	50.0%	3-6	50.0%	3-3	100.0%	8-13	61.5%	3				

Officials: Scott Yarbrough, Chaney Muench, Esrael Silva
Technical fouls: Montana State-None. Delaware-None.
Attendance: 625
2018 Preseason WNIT Consolation Round 1

Score by periods	1st	2nd	3rd	4th	Total						
Montana State	24	11	16	18	69						
Delaware	10	15	15	20	60						

Last FG - MSU 4th-07:05, DELAWARE 4th-00:27.
Largest lead - MSU by 23 2nd-06:22, DELAWARE by 4 1st-09:22.
MSU led for 37:39. DELAWARE led for 01:24. Game was tied for 00:57.

Score tied - 1 time.
Lead changed - 1 time.

3 Delaware 71, Nicholls 56

Sunday, November 17, 2018 | Strahan Arena | San Marcos, Texas

Delaware 71 • 1-2

#	Player		Total		3-Ptr	Rebounds					PF	TP	A TO Blk Stl				Min
			FG-FGA	FG-FGA	FT-FTA	Off	Def	Tot									
20	Dickey, Jasmine	f	6-13	0-0	3-5	4	12	16	3	15	2	3	2	2	32		
22	DeFreese, Samone	f	3-10	0-1	6-6	4	2	6	5	12	2	3	0	1	25		
25	Lawrence, Rebecca	f	3-9	0-1	0-0	4	1	5	1	6	1	1	1	0	20		
02	Gonzales, Abby	g	7-13	4-10	2-2	1	2	3	2	20	2	4	0	2	35		
04	McBride, Paris	g	1-5	0-1	0-2	1	1	2	4	2	6	3	0	1	35		
00	Leftt, Gadson		0-1	0-0	0-0	0	1	1	1	0	0	1	0	0	3		
05	Nicholas, Makeda		1-3	0-0	0-0	1	4	5	4	2	3	1	2	0	14		
12	Oleary, Lizzie		1-2	0-0	0-0	0	0	0	0	2	0	1	0	0	2		
23	Kargo, Bailey		1-3	0-1	0-0	0	0	0	2	2	0	0	0	0	10		
24	Mascaro, Justina		3-10	0-2	4-6	4	0	4	3	10	0	1	1	1	18		
35	Lewis, Alison		0-2	0-0	0-0	0	0	0	0	0	2	0	0	0	6		
Team						4	4	8									
Totals			26-71	4-16	15-21	23	27	50	25	71	18	18	6	7	200		
1st FG %: 7-13			53.8%	2nd: 6-19	31.6%	3rd: 4-17	23.5%	4th: 9-22	40.9%	Game: 26-71	36.6%	Deadball					
3FG %: 1-1			100.0%	0-5	0.0%	0-4	0.0%	3-6	50.0%	4-16	25.0%	Rebounds					
FT %: 2-2			100.0%							71	48.6%						

2018-19 University of Delaware Women's Basketball | Hofstra | February 17

5 Bradley 59, Delaware 47

Friday, November 23, 2018 | FAU Arena | Boca Raton, Fla.

Delaware 47 • 2-3

#	Player	Total		3-Ptr		Rebounds		PF	TP	A	TO	Blk	Stl	Min
		FG-FGA	FG-FGA	FT-FTA	FT-FTA	Off	Def							
22	DeFreese, Samone	f	3-10	0-1	1-2	3	5	2	3	7	2	3	0	31
25	Lawrence, Rebecca	f	0-4	0-1	0-0	0	2	2	1	0	0	0	1	9
02	Gonzales, Abby	g	1-7	0-3	0-0	0	2	2	4	2	1	3	0	30
04	McBride, Paris	g	0-1	0-1	1-2	0	1	1	2	1	2	5	0	17
20	Dickey, Jasmine	g	5-13	0-0	1-2	3	15	18	2	11	1	3	1	2
00	Lefty, Gadson	g	5-8	0-0	0-0	4	2	6	2	10	0	1	0	1
05	Nicholas, Makeda	g	4-10	0-0	0-0	2	3	5	2	8	1	1	1	2
12	Oleary, Lizzie	g	0-0	0-0	0-0	1	1	2	1	0	0	1	0	0
23	Kargo, Bailey	g	2-7	1-2	1-2	0	0	0	3	6	2	4	0	0
24	Mascaro, Justina	g	1-3	0-0	0-0	0	0	0	1	2	1	0	0	2
35	Lewis, Alison	g	0-1	0-0	0-0	0	0	0	0	0	1	0	1	5
Team						2	2	4						
Totals			21-64	1-8	4-8	15	33	48	21	47	10	23	3	10

Bradley 59 • 3-0

#	Player	Total		3-Ptr		Rebounds		PF	TP	A	TO	Blk	Stl	Min
		FG-FGA	FG-FGA	FT-FTA	FT-FTA	Off	Def							
05	Brackmann, Chelsea	f	6-9	0-0	2-4	5	7	12	2	14	0	0	0	1
45	White, Nyjah	f	4-11	0-0	0-0	3	8	11	2	8	2	4	2	2
02	Davis, Elisha	g	2-5	0-2	0-0	1	0	1	0	4	4	5	0	2
03	Haack, Gabi	g	2-8	2-7	4-4	0	3	3	2	10	5	1	0	2
24	Kent, Shunseere	g	2-12	0-4	1-2	0	2	2	2	5	2	1	0	1
11	Petree, Lasha	g	3-11	1-5	0-0	1	4	5	1	7	0	0	1	0
12	Strong, Asia	g	0-0	0-0	0-0	0	0	0	0	0	0	0	0	0
13	Koenig, Tatum	g	0-1	0-1	0-0	0	0	0	0	2	0	1	0	0
14	Wilkins, Ryan	g	0-0	0-0	0-0	1	0	1	0	0	0	1	0	0
23	Lawson, Jailynn	g	3-5	1-2	0-0	0	0	0	0	7	1	2	0	1
30	Marsh, Emily	g	0-0	0-0	0-0	0	2	2	0	0	1	0	0	1
44	Markert, Vanessa	g	2-9	0-0	0-0	2	0	2	2	4	0	1	1	0
Team						2	2	4						
Totals			24-71	4-21	7-10	15	28	43	13	59	15	16	4	10

Officials: Rachel Melot, Adam Rider, Ryan Durham
Technical fouls: Delaware-None. Bradley-None.
Attendance: 472
FAU Thanksgiving Tournament Game 2

Score by periods	1st	2nd	3rd	4th	Total
Delaware	12	10	10	15	47
Bradley	12	11	19	17	59

Points	In	Off	2nd	Fast	Bench
DELAWA	34	13	8	8	26
BRADLEY	32	23	13	14	18

Last FG - DELAWARE 4th-00:44, BRADLEY 4th-01:01.
Largest lead - DELAWARE by 4 2nd-08:46, BRADLEY by 12 4th-00:21.
DELAWARE led for 10:34, BRADLEY led for 25:39. Game was tied for 03:47.

Score tied - 2 times.
Lead changed - 6 times.

6 Delaware 65, Lafayette 47

Saturday, November 25, 2018 | FAU Arena | Boca Raton, Fla.

Delaware 65 • 3-3

#	Player	Total		3-Ptr		Rebounds		PF	TP	A	TO	Blk	Stl	Min
		FG-FGA	FG-FGA	FT-FTA	FT-FTA	Off	Def							
00	Lefty, Gadson	f	2-3	0-0	1-1	3	5	8	5	5	0	0	0	1
20	Dickey, Jasmine	f	4-11	0-0	0-2	3	4	7	2	8	1	3	1	3
22	DeFreese, Samone	f	5-9	0-1	1-1	1	6	7	2	11	1	2	0	3
02	Gonzales, Abby	g	1-7	0-4	0-0	0	3	3	1	2	6	1	0	1
23	Kargo, Bailey	g	6-10	1-4	0-0	0	0	0	2	13	0	0	0	1
04	McBride, Paris	g	2-4	1-2	0-0	0	2	2	1	5	6	0	0	1
05	Nicholas, Makeda	g	3-12	0-2	1-2	0	3	3	4	7	1	3	0	1
12	Oleary, Lizzie	g	0-0	0-0	0-0	0	0	0	0	2	0	1	0	0
24	Mascaro, Justina	g	5-6	2-2	2-4	3	1	4	3	14	0	1	0	0
Team						0	5	5						
Totals			28-62	4-15	5-10	10	29	39	22	65	15	12	1	11

1st - FG %: 7-20 35.0%	2nd: 9-17 52.9%	3rd: 7-13 53.8%	4th: 5-12 41.7%	Game: 28-62 45.2%	Deadball
3FG %: 0-5 0.0%	2-4 50.0%	2-3 66.7%	0-3 0.0%	4-15 26.7%	Rebounds
FT %: 0-0 0.0%	0-0 0.0%	1-4 25.0%	4-6 66.7%	5-10 50.0%	2,1

Lafayette 47 • 3-3

#	Player	Total		3-Ptr		Rebounds		PF	TP	A	TO	Blk	Stl	Min
		FG-FGA	FG-FGA	FT-FTA	FT-FTA	Off	Def							
21	Martino, Olivia	f	0-5	0-3	3-4	0	0	0	4	3	0	0	0	1
25	Kucowski, Natalie	f	4-13	2-2	6-7	4	6	10	3	16	1	3	1	0
05	Freeland, Drew	g	2-10	1-5	0-0	3	2	5	0	5	2	0	0	1
15	Johnson, Nicole	g	1-5	0-2	3-4	0	2	2	1	5	2	5	0	0
30	Wilson, Makaila	g	1-4	0-0	1-2	2	6	8	1	3	2	0	0	0
01	Havas, Jiselle	g	0-6	0-4	1-2	1	1	2	2	1	0	0	0	3
10	Margolis, Becca	g	0-1	0-1	0-0	0	1	1	0	0	0	1	0	0
12	Ganpo, Naomi	g	0-5	0-0	5-6	1	2	3	2	5	0	3	0	0
13	Agnello, Sarah	g	1-4	0-2	2-2	0	1	1	1	4	0	0	0	2
31	Sabino, Sydney	g	0-0	0-0	0-0	0	0	0	0	0	0	0	0	0
34	Vipond, Tasha	g	2-5	0-0	1-2	5	3	8	2	5	0	1	1	0
Team						3	3	6						
Totals			11-58	3-19	22-29	19	27	46	16	47	5	15	2	6

1st - FG %: 1-16 6.3%	2nd: 6-13 46.2%	3rd: 2-15 13.3%	4th: 2-14 14.3%	Game: 11-58 19.0%	Deadball
3FG %: 1-7 14.3%	2-4 50.0%	0-4 0.0%	0-4 0.0%	3-19 15.8%	Rebounds
FT %: 3-4 75.0%	8-10 80.0%	6-7 85.7%	5-8 62.5%	22-29 75.9%	5

Officials: Charlie Hast, Adam Rider, Xiomara Cruz
Technical fouls: Delaware-None. Lafayette-None.
Attendance: 415
FAU Thanksgiving Tournament Game 3

Score by periods	1st	2nd	3rd	4th	Total
Delaware	14	20	17	14	65
Lafayette	6	22	10	9	47

Points	In	Off	2nd	Fast	Bench
DELAWA	28	13	8	21	26
LAFAYET	18	9	11	0	15

Last FG - DELAWARE 4th-00:29, LAFAYETT 4th-02:29.
Largest lead - DELAWARE by 20 4th-03:04, LAFAYETT by 1 1st-08:12.
DELAWARE led for 37:21, LAFAYETT led for 00:50. Game was tied for 01:48.

Score tied - 0 times.
Lead changed - 1 time.

7 Boston University 72, Delaware 61

Sunday, December 2, 2018 | Case Gym | Boston, Mass.

Delaware 61 • 3-4

#	Player	Total		3-Ptr		Rebounds		PF	TP	A	TO	Blk	Stl	Min
		FG-FGA	FG-FGA	FT-FTA	FT-FTA	Off	Def							
05	Nicholas, Makeda	f	8-12	0-0	2-2	2	2	4	2	18	0	2	3	0
22	DeFreese, Samone	f	3-6	1-1	0-2	3	4	7	4	7	2	2	0	0
02	Gonzales, Abby	g	5-11	4-9	2-2	1	1	2	3	16	3	2	0	2
20	Dickey, Jasmine	g	2-8	0-0	0-0	1	3	4	4	4	0	2	1	1
23	Kargo, Bailey	g	1-8	1-6	0-0	1	1	2	2	3	3	0	0	0
04	McBride, Paris	g	0-3	0-1	0-2	0	0	0	3	0	2	0	0	1
12	Oleary, Lizzie	g	0-3	0-0	0-0	0	0	0	2	0	0	0	0	0
24	Mascaro, Justina	g	3-13	1-5	2-2	3	2	5	2	9	2	0	0	2
25	Lawrence, Rebecca	g	2-7	0-0	0-0	0	1	4	0	4	0	0	3	0
35	Lewis, Alison	g	0-0	0-0	0-0	0	1	1	1	0	1	0	0	0
Team						3	1	4						
Totals			24-71	7-22	6-10	17	16	33	23	61	13	8	7	6

1st - FG %: 7-17 41.2%	2nd: 4-20 20.0%	3rd: 4-15 26.7%	4th: 9-19 47.4%	Game: 24-71 33.8%	Deadball
3FG %: 1-5 20.0%	1-3 33.3%	1-4 25.0%	4-10 40.0%	6-13 46.2%	Rebounds
FT %: 0-0 0.0%	0-0 0.0%	6-10 60.0%	0-0 0.0%	6-10 60.0%	2

Boston University 72 • 4-2

#	Player		Total		3-Ptr		Rebounds				PF	TP	A	TO	Blk	Stl	Min
			FG-FGA	FG-FGA	FT-FTA	Off	Def	Tot									
03	Thompson, Naiyah	f	3-7	0-0	1-1	1	3	4	4	7	0	4	0	0	0	30	
20	Irving, Nia	f	6-13	0-0	3-4	4	5	9	2	15	3	3	1	2	30		
02	Nelson, Katie	g	5-11	3-7	6-6	1	6	7	1	19	6	3	0	1	36		
04	Hauck, Payton	g	5-10	0-1	1-5	2	8	10	2	11	4	2	0	0	33		
21	Spearmann, Lauren	g	4-7	3-4	2-2	2	0	2	2	13	2	4	0	0	38		
05	Tibbitt, Chiara	g	3-4	0-0	1-2	0	2	2	0	7	0	0	0	0	11		
25	Childs, Riley	g	0-2	0-1	0-0	0	4	4	2	0	0	3	1	0	18		
30	Edgehill, Vanessa	g	0-0	0-0	0-0	0	0	0	1	0	0	0	0	0	4		
Team						6	4	10			1						
Totals			26-54	6-13	14-20	16	32	48	14	72	15	20	2	3	200		
1st FG %: 8-12 66.7%			2nd: 8-15 53.3%	3rd: 3-15 20.0%	4th: 7-12 58.3%	Game: 26-54 48.1%		6-13 46.2%		Deadball Rebounds							
3FG %: 4-4 100.0%			1-5 20.0%	0-3 0.0%	1-1 100.0%												
FT %: 1-2 50.0%			0-0 0.0%	0-0 0.0%	0-0 0.0%												

2018-19 University of Delaware Women's Basketball | Hofstra | February 17

9 UCF 71, Delaware 60

Sunday December 9, 2018 | Bob Carpenter Center | Newark, Del.

UCF 71 • 7-1

#	Player	Total			3-Ptr	Rebounds			PF	TP	A TO Blk Stl				Min
		FG-FGA	FG-FGA	FT-FTA		Off	Def	Total							
05	Masseny Kaba	f	1-4	0-0	0-2	3	1	4	3	2	1	4	0	2	22
12	Nyala Shuler	f	2-3	0-1	0-0	0	1	1	2	4	0	1	0	1	13
02	Kornelia Wright	g	7-15	3-5	7-9	2	5	7	3	24	4	7	0	1	40
21	Sydnee McDonald	g	5-10	4-8	1-2	2	2	4	2	15	3	1	1	2	32
33	Jamesha Paul	g	0-1	0-0	0-0	0	1	1	1	0	2	2	0	3	14
03	Diamond Battles		0-2	0-0	0-0	0	0	0	2	0	1	3	0	0	4
11	Kayla Thiipgen		2-5	0-3	0-0	1	0	1	2	4	0	3	0	0	16
23	Lawriell Wilson		1-3	0-0	0-0	1	2	3	1	2	1	2	0	3	15
24	Fifi Ndour		1-2	0-0	3-4	0	5	5	2	5	1	0	3	4	12
25	Tolulope Omokore		4-7	0-0	3-4	1	4	5	0	11	0	1	0	1	21
32	Brittney Smith		1-1	0-0	2-2	1	0	1	4	4	2	1	0	0	11
Team						1	4	5							
Totals			24-53	7-17	16-23	12	25	37	22	71	15	25	4	17	200
1st - Totals			5-11	45.5%		64.7%									
3FG			2-6	33.3%		60.0%									
FT			2-4	50.0%		75.0%									
2nd: 7-15			3-5			60.0%									
3rd: 10-19			5-13			38.5%									
4th: 2-8			1-3			33.3%									
Game: 24-53			4-16			25.0%									
16-23			69.6%			41.2%									
Deadball															
Rebounds															

Delaware 60 • 3-6

#	Player	Total		3-Ptr	Rebounds			PF	TP	A	TO	Blk	Stl	Min	
		FG-FA	FG-FGA	FT-FTA	Off	Def	Tot								
05	Nicholas, Makeda	f	1-5	0-0	1-2	1	3	4	2	3	0	3	1	22	
02	Gonzales, Abby	g	5-9	3-5	5-7	0	2	2	3	18	2	4	0	1	37
20	Dickey, Jasmine	g	1-9	0-0	5-8	4	3	7	5	7	2	6	1	3	35
24	Mascaro, Justina	g	1-2	0-1	0-0	0	2	2	1	2	1	3	0	1	13
35	Lewis, Alison	g	3-7	0-0	0-0	4	1	5	2	6	0	2	0	4	21
04	McBride, Paris	g	3-7	1-2	1-2	0	0	0	3	8	4	4	0	1	29
12	Oleary, Lizzie	g	0-0	0-0	0-0	0	0	0	2	0	0	0	0	0	3
22	DeFreese, Samone	g	3-6	0-0	4-8	1	4	5	5	10	1	3	1	2	23
25	Lawrence, Rebecca	g	3-5	0-0	0-0	1	1	2	1	6	0	0	1	0	17
Team						0	2	2							
Totals			20-50	4-8	16-27	11	18	29	24	60	10	25	4	13	200
1st - FG% 38.0 3pt% 0.0 2nd - FG% 37.5 3pt% 0.0 3rd - FG% 51.5 3pt% 0.0 4th - FG% 91.0 3pt% 0.0 5th - FG% 70.0 3pt% 0.0 6th - FG% 70.0 3pt% 0.0 7th - FG% 70.0 3pt% 0.0 8th - FG% 70.0 3pt% 0.0 9th - FG% 70.0 3pt% 0.0 10th - FG% 70.0 3pt% 0.0 11th - FG% 70.0 3pt% 0.0 12th - FG% 70.0 3pt% 0.0 13th - FG% 70.0 3pt% 0.0 14th - FG% 70.0 3pt% 0.0 15th - FG% 70.0 3pt% 0.0 16th - FG% 70.0 3pt% 0.0 17th - FG% 70.0 3pt% 0.0 18th - FG% 70.0 3pt% 0.0 19th - FG% 70.0 3pt% 0.0 20th - FG% 70.0 3pt% 0.0 21st - FG% 70.0 3pt% 0.0 22nd - FG% 70.0 3pt% 0.0 23rd - FG% 70.0 3pt% 0.0 24th - FG% 70.0 3pt% 0.0 25th - FG% 70.0 3pt% 0.0 26th - FG% 70.0 3pt% 0.0 27th - FG% 70.0 3pt% 0.0 28th - FG% 70.0 3pt% 0.0 29th - FG% 70.0 3pt% 0.0 30th - FG% 70.0 3pt% 0.0 31st - FG% 70.0 3pt% 0.0 32nd - FG% 70.0 3pt% 0.0 33rd - FG% 70.0 3pt% 0.0 34th - FG% 70.0 3pt% 0.0 35th - FG% 70.0 3pt% 0.0 36th - FG% 70.0 3pt% 0.0 37th - FG% 70.0 3pt% 0.0 38th - FG% 70.0 3pt% 0.0 39th - FG% 70.0 3pt% 0.0 40th - FG% 70.0 3pt% 0.0 41st - FG% 70.0 3pt% 0.0 42nd - FG% 70.0 3pt% 0.0 43rd - FG% 70.0 3pt% 0.0 44th - FG% 70.0 3pt% 0.0 45th - FG% 70.0 3pt% 0.0 46th - FG% 70.0 3pt% 0.0 47th - FG% 70.0 3pt% 0.0 48th - FG% 70.0 3pt% 0.0 49th - FG% 70.0 3pt% 0.0 50th - FG% 70.0 3pt% 0.0 51st - FG% 70.0 3pt% 0.0 52nd - FG% 70.0 3pt% 0.0 53rd - FG% 70.0 3pt% 0.0 54th - FG% 70.0 3pt% 0.0 55th - FG% 70.0 3pt% 0.0 56th - FG% 70.0 3pt% 0.0 57th - FG% 70.0 3pt% 0.0 58th - FG% 70.0 3pt% 0.0 59th - FG% 70.0 3pt% 0.0 60th - FG% 70.0 3pt% 0.0 61st - FG% 70.0 3pt% 0.0 62nd - FG% 70.0 3pt% 0.0 63rd - FG% 70.0 3pt% 0.0 64th - FG% 70.0 3pt% 0.0 65th - FG% 70.0 3pt% 0.0 66th - FG% 70.0 3pt% 0.0 67th - FG% 70.0 3pt% 0.0 68th - FG% 70.0 3pt% 0.0 69th - FG% 70.0 3pt% 0.0 70th - FG% 70.0 3pt% 0.0 71st - FG% 70.0 3pt% 0.0 72nd - FG% 70.0 3pt% 0.0 73rd - FG% 70.0 3pt% 0.0 74th - FG% 70.0 3pt% 0.0 75th - FG% 70.0 3pt% 0.0 76th - FG% 70.0 3pt% 0.0 77th - FG% 70.0 3pt% 0.0 78th - FG% 70.0 3pt% 0.0 79th - FG% 70.0 3pt% 0.0 80th - FG% 70.0 3pt% 0.0 81st - FG% 70.0 3pt% 0.0 82nd - FG% 70.0 3pt% 0.0 83rd - FG% 70.0 3pt% 0.0 84th - FG% 70.0 3pt% 0.0 85th - FG% 70.0 3pt% 0.0 86th - FG% 70.0 3pt% 0.0 87th - FG% 70.0 3pt% 0.0 88th - FG% 70.0 3pt% 0.0 89th - FG% 70.0 3pt% 0.0 90th - FG% 70.0 3pt% 0.0 91st - FG% 70.0 3pt% 0.0 92nd - FG% 70.0 3pt% 0.0 93rd - FG% 70.0 3pt% 0.0 94th - FG% 70.0 3pt% 0.0 95th - FG% 70.0 3pt% 0.0 96th - FG% 70.0 3pt% 0.0 97th - FG% 70.0 3pt% 0.0 98th - FG% 70.0 3pt% 0.0 99th - FG% 70.0 3pt% 0.0 100th - FG% 70.0 3pt% 0.0 101st - FG% 70.0 3pt% 0.0 102nd - FG% 70.0 3pt% 0.0 103rd - FG% 70.0 3pt% 0.0 104th - FG% 70.0 3pt% 0.0 105th - FG% 70.0 3pt% 0.0 106th - FG% 70.0 3pt% 0.0 107th - FG% 70.0 3pt% 0.0 108th - FG% 70.0 3pt% 0.0 109th - FG% 70.0 3pt% 0.0 110th - FG% 70.0 3pt% 0.0 111st - FG% 70.0 3pt% 0.0 112nd - FG% 70.0 3pt% 0.0 113rd - FG% 70.0 3pt% 0.0 114th - FG% 70.0 3pt% 0.0 115th - FG% 70.0 3pt% 0.0 116th - FG% 70.0 3pt% 0.0 117th - FG% 70.0 3pt% 0.0 118th - FG% 70.0 3pt% 0.0 119th - FG% 70.0 3pt% 0.0 120th - FG% 70.0 3pt% 0.0 121st - FG% 70.0 3pt% 0.0 122nd - FG% 70.0 3pt% 0.0 123rd - FG% 70.0 3pt% 0.0 124th - FG% 70.0 3pt% 0.0 125th - FG% 70.0 3pt% 0.0 126th - FG% 70.0 3pt% 0.0 127th - FG% 70.0 3pt% 0.0 128th - FG% 70.0 3pt% 0.0 129th - FG% 70.0 3pt% 0.0 130th - FG% 70.0 3pt% 0.0 131st - FG% 70.0 3pt% 0.0 132nd - FG% 70.0 3pt% 0.0 133rd - FG% 70.0 3pt% 0.0 134th - FG% 70.0 3pt% 0.0 135th - FG% 70.0 3pt% 0.0 136th - FG% 70.0 3pt% 0.0 137th - FG% 70.0 3pt% 0.0 138th - FG% 70.0 3pt% 0.0 139th - FG% 70.0 3pt% 0.0 140th - FG% 70.0 3pt% 0.0 141st - FG% 70.0 3pt% 0.0 142nd - FG% 70.0 3pt% 0.0 143rd - FG% 70.0 3pt% 0.0 144th - FG% 70.0 3pt% 0.0 145th - FG% 70.0 3pt% 0.0 146th - FG% 70.0 3pt% 0.0 147th - FG% 70.0 3pt% 0.0 148th - FG% 70.0 3pt% 0.0 149th - FG% 70.0 3pt% 0.0 150th - FG% 70.0 3pt% 0.0 151st - FG% 70.0 3pt% 0.0 152nd - FG% 70.0 3pt% 0.0 153rd - FG% 70.0 3pt% 0.0 154th - FG% 70.0 3pt% 0.0 155th - FG% 70.0 3pt% 0.0 156th - FG% 70.0 3pt% 0.0 157th - FG% 70.0 3pt% 0.0 158th - FG% 70.0 3pt% 0.0 159th - FG% 70.0 3pt% 0.0 160th - FG% 70.0 3pt% 0.0 161st - FG% 70.0 3pt% 0.0 162nd - FG% 70.0 3pt% 0.0 163rd - FG% 70.0 3pt% 0.0 164th - FG% 70.0 3pt% 0.0 165th - FG% 70.0 3pt% 0.0 166th - FG% 70.0 3pt% 0.0 167th - FG% 70.0 3pt% 0.0 168th - FG% 70.0 3pt% 0.0 169th - FG% 70.0 3pt% 0.0 170th - FG% 70.0 3pt% 0.0 171st - FG% 70.0 3pt% 0.0 172nd - FG% 70.0 3pt% 0.0 173rd - FG% 70.0 3pt% 0.0 174th - FG% 70.0 3pt% 0.0 175th - FG% 70.0 3pt% 0.0 176th - FG% 70.0 3pt% 0.0 177th - FG% 70.0 3pt% 0.0 178th - FG% 70.0 3pt% 0.0 179th - FG% 70.0 3pt% 0.0 180th - FG% 70.0 3pt% 0.0 181st - FG% 70.0 3pt% 0.0 182nd - FG% 70.0 3pt% 0.0 183rd - FG% 70.0 3pt% 0.0 184th - FG% 70.0 3pt% 0.0 185th - FG% 70.0 3pt% 0.0 186th - FG% 70.0 3pt% 0.0 187th - FG% 70.0 3pt% 0.0 188th - FG% 70.0 3pt% 0.0 189th - FG% 70.0 3pt% 0.0 190th - FG% 70.0 3pt% 0.0 191st - FG% 70.0 3pt% 0.0 192nd - FG% 70.0 3pt% 0.0 193rd - FG% 70.0 3pt% 0.0 194th - FG% 70.0 3pt% 0.0 195th - FG% 70.0 3pt% 0.0 196th - FG% 70.0 3pt% 0.0 197th - FG% 70.0 3pt% 0.0 198th - FG% 70.0 3pt% 0.0 199th - FG% 70.0 3pt% 0.0 200th - FG% 70.0 3pt% 0.0 201st - FG% 70.0 3pt% 0.0 202nd - FG% 70.0 3pt% 0.0 203rd - FG% 70.0 3pt% 0.0 204th - FG% 70.0 3pt% 0.0 205th - FG% 70.0 3pt% 0.0 206th - FG% 70.0 3pt% 0.0 207th - FG% 70.0 3pt% 0.0 208th - FG% 70.0 3pt% 0.0 209th - FG% 70.0 3pt% 0.0 210th - FG% 70.0 3pt% 0.0 211st - FG% 70.0 3pt% 0.0 212nd - FG% 70.0 3pt% 0.0 213rd - FG% 70.0 3pt% 0.0 214th - FG% 70.0 3pt% 0.0 215th - FG% 70.0 3pt% 0.0 216th - FG% 70.0 3pt% 0.0 217th - FG% 70.0 3pt% 0.0 218th - FG% 70.0 3pt% 0.0 219th - FG% 70.0 3pt% 0.0 220th - FG% 70.0 3pt% 0.0 221st - FG% 70.0 3pt% 0.0 222nd - FG% 70.0 3pt% 0.0 223rd - FG% 70.0 3pt% 0.0 224th - FG% 70.0 3pt% 0.0 225th - FG% 70.0 3pt% 0.0 226th - FG% 70.0 3pt% 0.0 227th - FG% 70.0 3pt% 0.0 228th - FG% 70.0 3pt% 0.0 229th - FG% 70.0 3pt% 0.0 230th - FG% 70.0 3pt% 0.0 231st - FG% 70.0 3pt% 0.0 232nd - FG% 70.0 3pt% 0.0 233rd - FG% 70.0 3pt% 0.0 234th - FG% 70.0 3pt% 0.0 235th - FG% 70.0 3pt% 0.0 236th - FG% 70.0 3pt% 0.0 237th - FG% 70.0 3pt% 0.0 238th - FG% 70.0 3pt% 0.0 239th - FG% 70.0 3pt% 0.0 240th - FG% 70.0 3pt% 0.0 241st - FG% 70.0 3pt% 0.0 242nd - FG% 70.0 3pt% 0.0 243rd - FG% 70.0 3pt% 0.0 244th - FG% 70.0 3pt% 0.0 245th - FG% 70.0 3pt% 0.0 246th - FG% 70.0 3pt% 0.0 247th - FG% 70.0 3pt% 0.0 248th - FG% 70.0 3pt% 0.0 249th - FG% 70.0 3pt% 0.0 250th - FG% 70.0 3pt% 0.0 251st - FG% 70.0 3pt% 0.0 252nd - FG% 70.0 3pt% 0.0 253rd - FG% 70.0 3pt% 0.0 254th - FG% 70.0 3pt% 0.0 255th - FG% 70.0 3pt% 0.0 256th - FG% 70.0 3pt% 0.0 257th - FG% 70.0 3pt% 0.0 258th - FG% 70.0 3pt% 0.0 259th - FG% 70.0 3pt% 0.0 260th - FG% 70.0 3pt% 0.0 261st - FG% 70.0 3pt% 0.0 262nd - FG% 70.0 3pt% 0.0 263rd - FG% 70.0 3pt% 0.0 264th - FG% 70.0 3pt% 0.0 265th - FG% 70.0 3pt% 0.0 266th - FG% 70.0 3pt% 0.0 267th - FG% 70.0 3pt% 0.0 268th - FG% 70.0 3pt% 0.0 269th - FG% 70.0 3pt% 0.0 270th - FG% 70.0 3pt% 0.0 271st - FG% 70.0 3pt% 0.0 272nd - FG% 70.0 3pt% 0.0 273rd - FG% 70.0 3pt% 0.0 274th - FG% 70.0 3pt% 0.0 275th - FG% 70.0 3pt% 0.0 276th - FG% 70.0 3pt% 0.0 277th - FG% 70.0 3pt% 0.0 278th - FG% 70.0 3pt% 0.0 279th - FG% 70.0 3pt% 0.0 280th - FG% 70.0 3pt% 0.0 281st - FG% 70.0 3pt% 0.0 282nd - FG% 70.0 3pt% 0.0 283rd - FG% 70.0 3pt% 0.0 284th - FG% 70.0 3pt% 0.0 285th - FG% 70.0 3pt% 0.0 286th - FG% 70.0 3pt% 0.0 287th - FG% 70.0 3pt% 0.0 288th - FG% 70.0 3pt% 0.0 289th - FG% 70.0 3pt% 0.0 290th - FG% 70.0 3pt% 0.0 291st - FG% 70.0 3pt% 0.0 292nd - FG% 70.0 3pt% 0.0 293rd - FG% 70.0 3pt% 0.0 294th - FG% 70.0 3pt% 0.0 295th - FG% 70.0 3pt% 0.0 296th - FG% 70.0 3pt% 0.0 297th - FG% 70.0 3pt% 0.0 298th - FG% 70.0 3pt% 0.0 299th - FG% 70.0 3pt% 0.0 300th - FG% 70.0 3pt% 0.0 301st - FG% 70.0 3pt% 0.0 302nd - FG% 70.0 3pt% 0.0 303rd - FG% 70.0 3pt% 0.0 304th - FG% 70.0 3pt% 0.0 305th - FG% 70.0 3pt% 0.0 306th - FG% 70.0 3pt% 0.0 307th - FG% 70.0 3pt% 0.0 308th - FG% 70.0 3pt% 0.0 309th - FG% 70.0 3pt% 0.0 310th - FG% 70.0 3pt% 0.0 311st - FG% 70.0 3pt% 0.0 312nd - FG% 70.0 3pt% 0.0 313rd - FG% 70.0 3pt% 0.0 314th - FG% 70.0 3pt% 0.0 315th - FG% 70.0 3pt% 0.0 316th - FG% 70.0 3pt% 0.0 317th - FG% 70.0 3pt% 0.0 318th - FG% 70.0 3pt% 0.0 319th - FG% 70.0 3pt% 0.0 320th - FG% 70.0 3pt% 0.0 321st - FG% 70.0 3pt% 0.0 322nd - FG% 70.0 3pt% 0.0 323rd - FG% 70.0 3pt% 0.0 324th - FG% 70.0 3pt% 0.0 325th - FG% 70.0 3pt% 0.0 326th - FG% 70.0 3pt% 0.0 327th - FG% 70.0 3pt% 0.0 328th - FG% 70.0 3pt% 0.0 329th - FG% 70.0 3pt% 0.0 330th - FG% 70.0 3pt% 0.0 331st - FG% 70.0 3pt% 0.0 332nd - FG% 70.0 3pt% 0.0 333rd - FG% 70.0 3pt% 0.0 334th - FG% 70.0 3pt% 0.0 335th - FG% 70.0 3pt% 0.0 336th - FG% 70.0 3pt% 0.0 337th - FG% 70.0 3pt% 0.0 338th - FG% 70.0 3pt% 0.0 339th - FG% 70.0 3pt% 0.0 340th - FG% 70.0 3pt% 0.0 341st - FG% 70.0 3pt% 0.0 342nd - FG% 70.0 3pt% 0.0 343rd - FG% 70.0 3pt% 0.0 344th - FG% 70.0 3pt% 0.0 345th - FG% 70.0 3pt% 0.0 346th - FG% 70.0 3pt% 0.0 347th - FG% 70.0 3pt% 0.0 348th - FG% 70.0 3pt% 0.0 349th - FG% 70.0 3pt% 0.0 350th - FG% 70.0 3pt% 0.0 351st - FG% 70.0 3pt% 0.0 352nd - FG% 70.0 3pt% 0.0 353rd - FG% 70.0 3pt% 0.0 354th - FG% 70.0 3pt% 0.0 355th - FG% 70.0 3pt% 0.0 356th - FG% 70.0 3pt% 0.0 357th - FG% 70.0 3pt% 0.0 358th - FG% 70.0 3pt% 0.0 359th - FG% 70.0 3pt% 0.0 360th - FG% 70.0 3pt% 0.0 361st - FG% 70.0 3pt% 0.0 362nd - FG% 70.0 3pt% 0.0 363rd - FG% 70.0 3pt% 0.0 364th - FG% 70.0 3pt% 0.0 365th - FG% 70.0 3pt% 0.0 366th - FG% 70.0 3pt% 0.0 367th - FG% 70.0 3pt% 0.0 368th - FG% 70.0 3pt% 0.0 369th - FG% 70.0 3pt% 0.0 370th - FG% 70.0 3pt% 0.0 371st - FG% 70.0 3pt% 0.0 372nd - FG% 70.0 3pt% 0.0 373rd - FG% 70.0 3pt% 0.0 374th - FG% 70.0 3pt% 0.0 375th - FG% 70.0 3pt% 0.0 376th - FG% 70.0 3pt% 0.0 377th - FG% 70.0 3pt% 0.0 378th - FG% 70.0 3pt% 0.0 379th - FG% 70.0 3pt% 0.0 380th - FG% 70.0 3pt% 0.0 381st - FG% 70.0 3pt% 0.0 382nd - FG% 70.0 3pt% 0.0 383rd - FG% 70.0 3pt% 0.0 384th - FG% 70.0 3pt% 0.0 385th - FG% 70.0 3pt% 0.0 386th - FG% 70.0 3pt% 0.0 387th - FG% 70.0 3pt% 0.0 388th - FG% 70.0 3pt% 0.0 389th - FG% 70.0 3pt% 0.0 390th - FG% 70.0 3pt% 0.0 391st - FG% 70.0 3pt% 0.0 392nd - FG% 70.0 3pt% 0.0 393rd - FG% 70.0 3pt% 0.0 394th - FG% 70.0 3pt% 0.0 395th - FG% 70.0 3pt% 0.0 396th - FG% 70.0 3pt% 0.0 397th - FG% 70.0 3pt% 0.0 398th - FG% 70.0 3pt% 0.0 399th - FG% 70.0 3pt% 0.0 400th - FG% 70.0 3pt% 0.0 401st - FG% 70.0 3pt% 0.0 402nd - FG% 70.0 3pt% 0.0 403rd - FG% 70.0 3pt% 0.0 404th - FG% 70.0 3pt% 0.0 405th - FG% 70.0 3pt% 0.0 406th - FG% 70.0 3pt% 0.0 407th - FG% 70.0 3pt% 0.0 408th - FG% 70.0 3pt% 0.0 409th - FG% 70.0 3pt% 0.0 410th - FG% 70.0 3pt% 0.0 411st - FG% 70.0 3pt% 0.0 412nd - FG% 70.0 3pt% 0.0 413rd - FG% 70.0 3pt% 0.0 414th - FG% 70.0 3pt% 0.0 415th - FG% 70.0 3pt% 0.0 416th - FG% 70.0 3pt% 0.0 417th - FG% 70.0 3pt% 0.0 418th - FG% 70.0 3pt% 0.0 419th - FG% 70.0 3pt% 0.0 420th - FG% 70.0 3pt% 0.0 421st - FG% 70.0 3pt% 0.0 422nd - FG% 70.0 3pt% 0.0 423rd - FG% 70.0 3pt% 0.0 424th - FG% 70.0 3pt% 0.0 425th - FG% 70.0 3pt% 0.0 426th - FG% 70.0 3pt% 0.0 427th - FG% 70.0 3pt% 0.0 428th - FG% 70.0 3pt% 0.0 429th - FG% 70.0 3pt% 0.0 430th - FG% 70.0 3pt% 0.0 431st - FG% 70.0 3pt% 0.0 432nd - FG% 70.0 3pt% 0.0 433rd - FG% 70.0 3pt% 0.0 434th - FG% 70.0 3pt% 0.0 435th - FG% 70.0 3pt% 0.0 436th - FG% 70.0 3pt% 0.0 437th - FG% 70.0 3pt% 0.0 438th - FG% 70.0 3pt% 0.0 439th - FG% 70.0 3pt% 0.0 440th - FG% 70.0 3pt% 0.0 441st - FG% 70.0 3pt% 0.0 442nd - FG% 70.0 3pt% 0.0 443rd - FG% 70.0 3pt% 0.0 444th - FG% 70.0 3pt% 0.0 445th - FG% 70.0 3pt% 0.0 446th - FG% 70.0 3pt% 0.0 447th - FG% 70.0 3pt% 0.0 448th - FG% 70.0 3pt% 0.0 449th - FG% 70.0 3pt% 0.0 450th - FG% 70.0 3pt% 0.0 451st - FG% 70.0 3pt% 0.0 452nd - FG% 70.0 3pt% 0.0 453rd - FG% 70.0 3pt% 0.0 454th - FG% 70.0 3pt% 0.0 455th - FG% 70.0 3pt% 0.0 456th - FG% 70.0 3pt% 0.0 457th - FG% 70.0 3pt% 0.0 458th - FG% 70.0 3pt% 0.0 459th - FG% 70.0 3pt% 0.0 460th - FG% 70.0 3pt% 0.0 461st - FG% 70.0 3pt% 0.0 462nd - FG% 70.0 3pt% 0.0 463rd - FG% 70.0 3pt% 0.0 464th - FG% 70.0 3pt% 0.0 465th - FG% 70.0 3pt% 0.0 466th - FG% 70.0 3pt% 0.0 467th - FG% 70.0 3pt% 0.0 468th - FG% 70.0 3pt% 0.0 469th - FG% 70.0 3pt% 0.0 470th - FG% 70.0 3pt% 0.0 471st - FG% 70.0 3pt% 0.0 472nd - FG% 70.0 3pt% 0.0 473rd - FG% 70.0 3pt% 0.0 474th - FG% 70.0 3pt% 0.0 475th - FG% 70.0 3pt% 0.0 476th - FG% 70.0 3pt% 0.0 477th - FG% 70.0 3pt% 0.0 478th - FG% 70.0 3pt% 0.0 479th - FG% 70.0 3pt% 0.0 480th - FG% 70.0 3pt% 0.0 481st - FG% 70.0 3pt% 0.0 482nd - FG% 70.0 3pt% 0.0 483rd - FG% 70.0 3pt% 0.0 484th - FG% 70.0 3pt% 0.0 485th - FG% 70.0 3pt% 0.0 486th - FG% 70.0 3pt% 0.0 487th - FG% 70.0 3pt% 0.0 488th - FG% 70.0 3pt% 0.0 489th - FG% 70.0 3pt% 0.0 490th - FG% 70.0 3pt% 0.0 491st - FG% 70.0 3pt% 0.0 492nd - FG% 70.0 3pt% 0.0 493rd - FG% 70.0 3pt% 0.0 494th - FG% 70.0 3pt% 0.0 495th - FG% 70.0 3pt% 0.0 496th - FG% 70.0 3pt% 0.0 497th - FG% 70.0 3pt% 0.0 498th - FG% 70.0 3pt% 0.0 499th - FG% 70.0 3pt% 0.0 500th - FG% 70.0 3pt% 0.0 501st - FG% 70.0 3pt% 0.0 502nd - FG% 70.0 3pt% 0.0 503rd - FG% 70.0 3pt% 0.0 504th - FG% 70.0 3pt% 0.0 505th - FG% 70.0 3pt% 0.0 506th - FG% 70.0 3pt% 0.0 507th - FG% 70.0 3pt% 0.0 508th - FG% 70.0 3pt% 0.0 509th - FG% 70.0 3pt% 0.0 510th - FG% 70.0 3pt% 0.0 511st - FG% 70.0 3pt% 0.0 512nd - FG% 70.0 3pt% 0.0 513rd - FG% 70.0 3pt% 0.0 514th - FG% 70.0 3pt% 0.0 515th - FG% 70.0 3pt% 0.0 516th - FG% 70.0 3pt% 0.0 517th - FG% 70.0 3pt% 0.0 518th - FG% 70.0 3pt% 0.0 519th - FG% 70.0 3pt% 0.0 520th - FG% 70.0 3pt% 0.0 521st - FG% 70.0 3pt% 0.0 522nd - FG% 70.0 3pt% 0.0 523rd - FG% 70.0 3pt% 0.0 524th - FG% 70.0 3pt% 0.0 525th - FG% 70.0 3pt% 0.0 526th - FG% 70.0 3pt% 0.0 527th - FG% 70.0 3pt% 0.0 528th - FG% 70.0 3pt% 0.0 529th - FG% 70.0 3pt% 0.0 530th - FG% 70.0 3pt% 0.0 531st -															

1st FG %: 31.1 37.5% 2nd: 3-8 37.5% 3rd: 5-15 33.3% 4th: 9-19 47.4% Game: 20-50 40.0% Deadball Rebounds 5
 3FG %: 1-2 50.0% 1-2 50.0% 1-2 50.0% 4-8 50.0% 16-27 59.3%
 FT %: 1-2 50.0% 5-9 55.6% 10-14 71.4% 0-2 0.0%
 Officials: Tim Greene,Angel Stanton,Mark Hardcastle
 Technical fouls: UCF-None. Delaware-None.
 Attendance: 1043

Score by periods	1st	2nd	3rd	4th	Total
UCF	14	23	25	9	71
Delaware	8	12	21	19	60

Last FG - UCF 4th-02:53, DELAWARE 4th-00:19.
 Largest lead - UCF by 23 3rd-02:30, DELAWARE None.
 UCF led for 38:50. DELAWARE led for 00:00. Game was tied for 01:10.

10 Delaware 69, Gardner-Webb 45

Tuesday December 18, 2018 | Bob Carpenter Center | Newark, Del.

Gardner-Webb 45 • 4-6

		Total		3-Ptr	Rebounds					PF	TP	A TO Blk Stl				Min					
		FG-FGA	FG-FGA	FT-FTA	Off	Def	Tot	A	TO			Blk	Stl								
##	Player																				
42	Gabrielle Caponegro	f	0-8	0-0	1-4	3	5	8	2	1	0	2	3	1	25						
05	Carley Plentovich	g	2-8	0-3	0-0	0	4	4	0	4	0	4	3	0	36						
10	Savannah Plentovich	g	3-14	1-8	1-2	1	4	5	1	8	2	1	0	1	25						
20	Ky'Asia Stanford	g	1-6	0-1	0-0	1	0	1	4	2	0	4	0	0	26						
22	Nia Lee	g	0-2	0-0	1-2	0	3	3	4	1	0	1	0	1	18						
12	Jhessyka Williams		6-11	1-3	0-0	1	0	1	2	13	0	3	1	1	16						
25	Neydya Petithomme		3-9	0-2	3-3	0	1	1	1	9	1	3	0	1	19						
32	Morgan Pointer		3-5	1-2	0-0	2	5	7	1	7	2	1	0	0	22						
34	Alexis Hueston		0-2	0-0	0-0	0	2	2	3	0	0	1	0	0	13						
Team						4	0	4													
Totals			18-65	3-19	6-11	12	24	36	18	45	9	19	4	9	200						
1st - FG %: 5-14		37.6%		2nd: 3-17		17.6%		3rd: 5-15		33.3%		4th: 5-19		26.3%		Game: 18-45		27.7%		Deadball Rebound: 15.8%	
3FG %: 1-4		25.0%		1-5		20.0%		1-3		33.3%		0-7		0.0%		6-11		54.5%		4	
FT %: 0-0		0.0%		1-2		50.0%		1-3		33.3%		4-6		66.7%							

1st FG %: 5-14 35.7% 2nd: 3-17 17.6% 3rd: 5-15 33.3% 4th: 5-19 26.3% Game: 18-65 27.7% Deadball Rebounds 4
 3FG %: 1-4 25.0% 1-5 20.0% 1-3 33.3% 0-7 0.0% 18-65 27.7%
 FT %: 0-0 0.0% 1-2 50.0% 1-3 33.3% 4-6 66.7% 6-11 54.5%

Delaware 69 • 4-6

#	Player	Total		3-Ptr	Rebounds			PF	TP	A TO Blk Stl				Min	
		FG-FGA	FG-FGA	FT-FTA	Off	Def	Tot			A	TO	Blk	Stl		
05	Nicholas, Makeda	f	2-8	0-0	0-0	1	10	11	2	4	3	0	3	1	27
25	Lawrence, Rebecca	f	3-5	0-0	2-3	1	5	6	2	8	0	5	5	2	28
02	Gonzales, Abby	g	3-5	3-3	0-0	0	1	1	1	9	5	4	0	3	34
04	McBride, Paris	g	2-7	0-0	0-0	0	2	2	0	4	3	4	0	2	32
35	Lewis, Alison	g	6-13	0-0	5-8	3	5	8	2	17	4	1	0	3	37
00	Lefft, Gadson		2-4	0-0	1-2	1	6	7	0	5	0	0	0	0	9
12	Oleary, Lizzie		0-0	0-0	0-0	0	2	2	4	0	2	2	0	0	8
23	Kargo, Bailey		8-11	4-4	0-1	0	2	2	0	20	1	2	1	2	27
24	Mascaro, Justina		1-2	0-1	0-0	0	0	0	2	2	0	1	0	1	8
Team						1	3	4							
Totals			27-55	7-8	8-14	7	36	43	13	69	18	19	9	14	200
1st - FG %: 8-13 61.5%		2nd: 7-13 53.8%		3rd: 6-16 37.5%		4th: 1-3 33.3%		5th: 4-4 100.0%		Game: 27-55 49.1%		7-8 87.5%		Debut: 1-2 50.0%	
3FG %: 3-3 100.0%		0-1 0.0%		0-0 0.0%		4-4 100.0%		4-4 100.0%		7-15 46.7%		87.5%		Rebound: 11-13 84.6%	
FT %: 2-3 66.7%		0-0 0.0%		0-0 0.0%		0-0 0.0%		0-0 0.0%		10-13 76.9%		87.5%		27-43 62.8%	

1st FG %: 8-13 61.5% 2nd: 7-13 53.8% 3rd: 6-16 37.5% 4th: 6-13 46.2% Game: 27-55 49.1% Deadball Rebounds 3
 3FG %: 3-3 100.0% 0-1 0.0% 0-0 0.0% 4-4 100.0% 7-8 87.5%
 FT %: 1-2 50.0% 4-7 57.1% 1-3 33.3% 2-2 100.0% 8-14 57.1%

Officials: Scott Perkins,Roy Jackson,Norma Jones
 Technical fouls: Gardner-Webb-None. Delaware-None.
 Attendance: 869

Score by periods	1st	2nd	3rd	4th	Total
Gardner-Webb	11	8	12	14	45
Delaware	20	18	13	18	69

Last FG - GWU 4th-00:23, DELAWARE 4th-00:11.
 Largest lead - GWU by 4 1st-05:50, DELAWARE by 26 4th-01:30.
 GWU led for 03:25. DELAWARE led for 35:07. Game was tied for 01:28.

12 Delaware 48, Saint Joseph's 39

Friday, December 28, 2018 | Bob Carpenter Center | Newark, Del.

Saint Joseph's 39 • 4-8

Saint Joseph's 35 - 48																			
#	Player		Total		3-Ptr		Rebounds					PF	TP	A	TO	Blk	Stl	Min	
			FG-FGA	FG-FGA	FT-FTA	FT-FTA	Off	Def	Tot										
33	Katie Mayock	f	5-12	0-0	1-2	7	6	13	0	11	0	2	3	1	33				
35	Michala Clay	f	1-6	0-0	0-0	1	4	5	3	2	3	1	0	2	23				
04	Kristalyn Baisden	g	0-5	0-2	0-0	0	2	2	1	0	1	2	1	0	23				
12	Alyssa Monaghan	g	2-14	1-8	4-4	2	6	8	0	9	3	0	0	1	39				
14	Katie Jekot	g	0-1	0-1	0-0	0	1	1	1	0	2	0	0	0	10				
01	Whisper Fisher		2-6	0-0	0-2	1	6	7	4	4	2	4	1	1	20				
02	Lula Roig		5-7	0-0	1-2	1	3	4	0	11	0	4	0	0	30				
03	Naiah Delinois		0-0	0-0	0-0	0	0	0	1	0	0	1	0	0	3				
05	Elizabeth Marsicano		0-1	0-0	0-0	0	0	0	0	0	0	0	0	0	2				
13	Mary Sheehan		1-4	0-2	0-0	0	1	1	1	2	1	1	0	0	17				
Team						1	0	1											
Totals				16-56	1-13	6-10	13	29	42	11	39	12	15	5	5	200			
FG 1st Half: 8-30			26.7%	2nd half: 8-26			30.8%	Game: 16-56			28.6%	Deadball							
3FG 1st Half: 0-5			0.0%	2nd half: 1-8			12.5%	Game: 1-13			7.7%	Rebounds							
FT 1st Half: 1-4			25.0%	2nd half: 5-6			83.3%	Game: 5-10			60.0%	1							

FG % 1st Half: 8-30 26.7% 2nd half: 8-26 30.8% Game: 16-56 28.6% Deadball Rebounds 1
 3FG % 1st Half: 0-5 0.0% 2nd half: 1-8 12.5% Game: 1-13 7.7%
 FT % 1st Half: 1-4 25.0% 2nd half: 5-6 83.3% Game: 6-10 60.0%

Delaware 48 • 5-7

		Total	3-Ptr		Rebounds										
#	Player	FG-FGA	FG-FGA	FT-FTA	Off	Def	Tot	PF	TP	A	TO	Blk	Stl	Min	
05	Nicholas, Makeda	f	4-13	0-0	0-1	5	5	10	3	8	0	1	2	1	28
25	Lawrence, Rebecca	f	1-4	0-1	0-0	1	2	3	0	2	0	1	1	0	20
02	Gonzales, Abby	g	3-11	2-6	0-0	1	5	6	3	8	4	2	0	2	33
20	Dickey, Jasmine	g	5-9	0-0	0-0	2	7	9	2	10	1	2	1	2	31
35	Lewis, Alison	g	3-10	0-0	0-0	1	1	2	1	6	2	0	0	0	18
00	Lefft, Gadson		2-6	0-0	2-4	3	2	5	3	6	2	1	0	1	13
04	McBride, Paris		2-3	0-1	2-2	0	1	1	1	6	4	1	0	3	19
12	Oleary, Lizzie		1-4	0-0	0-0	0	1	1	1	2	1	2	1	0	10
22	DeFreese, Samone		0-3	0-0	0-0	1	3	4	2	0	0	1	0	0	15
23	Kargo, Bailey		0-2	0-0	0-0	0	1	1	1	0	1	0	0	1	13
Team						2	2	4							
Totals			21-65	2-8	4-7	16	30	46	17	48	15	11	5	10	200
FG % 1st Half: 10-35 28.6% 2nd half: 11-30 36.7% Game: 21-65 32.3% Deadball															
3FG % 1st Half: 1-3 33.3% 2nd half: 1-5 20.0% Game: 2-8 25.0% Rebounds															
FT % 1st Half: 1-2 50.0% 2nd half: 3-5 60.0% Game: 4-7 57.1% 2															

13

James Madison 68, Delaware 43

Friday, January 4, 2019 | Bob Carpenter Center | Newark, Del.

James Madison 68 • 9-3 | 1-0 CAA

#	Player	Total		3-Ptr		Rebounds			PF	TP	A TO Blk Stl				Min
		FG-FGA	FG-FGA	FT-FTA	Off Def Tot	PF	TP	A TO Blk Stl							
42	Devon Merritt	f	6-10	0-0	6-9	6	4	10	0	18	1	0	3	2	23
31	Kayla Cooper-William	c	4-8	0-0	0-0	9	9	18	3	8	3	2	2	2	31
03	Kamiah Smalls	g	3-7	1-4	7-9	3	4	7	2	14	0	3	0	0	28
13	Logan Reynolds	g	2-3	0-0	0-0	1	5	6	3	4	7	0	2	1	25
15	Lexie Barrier	g	2-9	1-5	0-0	1	0	1	3	5	0	4	0	0	13
01	Tori Harris		0-1	0-0	0-0	0	1	1	2	0	0	1	1	0	8
02	Jaylin Carodine		0-0	0-0	2-2	0	1	1	0	2	0	0	0	0	4
04	Madison Green		0-4	0-3	2-2	0	3	3	2	2	0	1	0	1	15
05	Breyenne Bellerand		0-1	0-0	0-0	0	1	1	2	0	0	0	1	0	4
10	Aneah Young		1-7	0-0	0-0	1	3	4	1	2	0	1	1	1	18
14	Eleanore Marciszewsk		0-1	0-1	1-2	0	2	2	2	1	0	2	0	0	8
55	Jackie Benitez		4-13	2-10	2-2	0	1	1	0	12	0	3	0	3	23
Team						1	3	4							
Totals			22-64	4-23	20-26	22	37	59	20	68	11	17	10	10	200

FG % 1st Half: 14-35 40.0% 2nd half: 8-29 27.6% Game: 22-64 34.4%
 3FG % 1st Half: 2-13 15.4% 2nd half: 2-10 20.0% Game: 4-23 17.4%
 FT % 1st Half: 9-12 75.0% 2nd half: 11-14 78.6% Game: 20-26 76.9%

Deadball
Rebounds
2

Delaware 43 • 5-8 | 0-1 CAA

#	Player	Total		3-Ptr		Rebounds			PF	TP	A TO Blk Stl				Min
		FG-FGA	FG-FGA	FT-FTA	Off Def Tot	PF	TP	A TO Blk Stl							
05	Nicholas, Makeda	f	4-12	0-0	1-4	2	1	3	1	9	2	2	2	0	28
25	Lawrence, Rebecca	f	3-6	0-0	2-2	4	2	6	3	8	0	1	0	0	28
02	Gonzales, Abby	g	2-11	1-8	0-0	1	1	2	0	5	0	2	0	0	27
20	Dickey, Jasmine	g	3-9	0-0	0-2	0	6	6	5	6	2	2	1	2	23
35	Lewis, Alison	g	0-6	0-0	0-0	1	3	4	2	0	2	0	0	0	18
00	Leftt, Gadson		0-1	0-0	1-4	1	3	4	2	1	0	0	1	1	7
04	McBride, Paris		1-4	0-0	1-2	1	1	2	4	3	1	0	0	1	20
12	Oleary, Lizzie		0-1	0-0	2-4	3	2	5	2	2	1	1	0	1	10
22	DeFreese, Samone		3-9	0-0	0-2	4	2	6	3	6	0	4	0	0	20
23	Kargo, Bailey		1-8	0-3	1-2	0	1	1	1	3	0	2	0	1	19
Team						3	2	5							
Totals			17-67	1-11	8-22	20	24	44	23	43	8	14	4	6	200

FG % 1st Half: 8-29 27.6% 2nd half: 9-38 23.7% Game: 17-67 25.4%
 3FG % 1st Half: 1-6 16.7% 2nd half: 0-5 0.0% Game: 1-11 9.1%
 FT % 1st Half: 4-12 33.3% 2nd half: 4-10 40.0% Game: 8-22 36.4%

Deadball
Rebounds
7

Officials: Erika Herriman-Camarota, Mark Resch, Thomas Danaher
 Technical fouls: James Madison-None. Delaware-None.
 Attendance: 1172

Score by periods	1st	2nd	3rd	4th	Total
James Madison	18	21	14	15	68
Delaware	11	10	6	16	43

Points	In Paint	Off T/O	2nd Chance	Fast Break	Bench
JMU	34	17	23	5	19
DELAWARE	24	12	9	4	15

Last FG - JMU 4th-04:08, DELAWARE 4th-00:33.
 Largest lead - JMU by 31 4th-07:17, DELAWARE by 2 1st-09:45.
 JMU led for 36:42. DELAWARE led for 01:54. Game was tied for 01:19.

Score tied - 2 times.
 Lead changed - 3 times.

14

Towson 56, Delaware 48

Sunday, January 6, 2019 | Bob Carpenter Center | Newark, Del.

Towson 56 • 8-5 | 2-0 CAA

#	Player	Total		3-Ptr		Rebounds			PF	TP	A TO Blk Stl				Min
		FG-FGA	FG-FGA	FT-FTA	Off Def Tot	PF	TP	A TO Blk Stl							
01	Nukiya Mayo	f	5-13	0-1	3-4	2	6	8	2	13	0	2	0	0	25
25	Maia Lee	c	0-1	0-0	0-0	2	9	11	3	0	0	3	1	1	20
11	Qierra Murray	g	1-7	0-3	2-2	1	1	2	0	4	4	1	0	0	38
21	Kionna Jeter	g	7-16	3-6	7-7	1	8	9	3	24	2	8	0	0	38
32	Ryan Holder	g	2-7	0-1	0-2	0	7	7	2	4	2	3	5	1	30
00	Danielle Durjan		3-11	0-1	0-0	1	7	8	3	6	2	2	1	2	21
03	Aislinn Flynn		0-0	0-0	0-0	0	2	2	2	0	2	1	0	1	8
10	Janeen Camp		2-10	0-0	1-4	5	3	8	4	5	0	0	4	0	20
24	Tess Borgosz		0-0	0-0	0-0	1	0	1	0	0	0	0	0	0	0+
Team						4	3	7							
Totals			20-65	3-12	13-19	17	46	63	19	56	12	20	11	5	200

FG % 1st Half: 10-32 31.3% 2nd half: 10-33 30.3% Game: 20-65 30.8%
 3FG % 1st Half: 2-8 25.0% 2nd half: 1-4 25.0% Game: 3-12 25.0%
 FT % 1st Half: 5-8 62.5% 2nd half: 8-11 72.7% Game: 13-19 68.4%

Deadball
Rebounds
2

Delaware 48 • 5-9 | 0-2 CAA

#	Player	Total		3-Ptr		Rebounds			PF	TP	A TO Blk Stl				Min
		FG-FGA	FG-FGA	FT-FTA	Off Def Tot	PF	TP	A TO Blk Stl							
05	Nicholas, Makeda	f	6-18	0-0	2-3	4	5	9	3	14	1	1	1	1	33
25	Lawrence, Rebecca	f	1-5	0-2	0-0	2	1	3	3	2	1	1	0	1	21
02	Gonzales, Abby	g	2-10	1-5	2-2	0	5	5	4	7	2	2	0	2	33
20	Dickey, Jasmine	g	1-13	0-0	2-4	5	8	13	2	4	1	2	1	1	31
35	Lewis, Alison	g	0-2	0-0	2-2	0	2	2	0	2	0	0	1	2	9
00	Leftt, Gadson		1-1	0-0	5-8	4	2	6	1	7	0	0	1	0	7
04	McBride, Paris		2-12	1-3	2-4	0	2	2	1	7	1	2	0	1	19
12	Oleary, Lizzie		0-3	0-0	0-0	1	3	4	3	0	0	3	0	1	11
22	DeFreese, Samone		0-7	0-0	0-0	1	2	3	3	0	1	0	0	0	18
23	Kargo, Bailey		2-7	1-3	0-0	1	0	1	0	5	1	1	0	0	18
Team						4	2	6							
Totals			15-78	3-13	15-23	22	32	54	20	48	8	12	4	9	200

FG % 1st Half: 5-38 13.2% 2nd half: 10-40 25.0% Game: 15-78 19.2%
 3FG % 1st Half: 1-7 14.3% 2nd half: 2-6 33.3% Game: 3-13 23.1%
 FT % 1st Half: 11-15 73.3% 2nd half: 4-8 50.0% Game: 15-23 65.2%

Deadball
Rebounds
3

Officials: Toni Patillo, Ken Kelly, Dan Outlaw
 Technical fouls: Towson-None. Delaware-None.
 Attendance: 1225

Score by periods	1st	2nd	3rd	4th	Total
Towson	11	16	17	12	56
Delaware	8	14	12	14	48

Points	In Paint	Off T/O	2nd Chance	Fast Break	Bench
TOWSON	22	11	6	10	11
DELAWARE	16	14	16	2	19

Last FG - TOWSON 4th-05:29, DELAWARE 4th-00:11.
 Largest lead - TOWSON by 14 4th-06:54, DELAWARE by 2 1st-08:40.
 TOWSON led for 35:10. DELAWARE led for 00:29. Game was tied for 03:24.

Score tied - 2 times.
 Lead changed - 1 time.

15

Drexel 57, Delaware 40

Sunday, January 13, 2019 | Bob Carpenter Center | Newark, Del.

Drexel 57 • 9-5 | 1-2 CAA

#	Player	Total		3-Ptr		Rebounds			PF	TP	A TO Blk Stl				Min
		FG-FGA	FG-FGA	FT-FTA	Off Def Tot	PF	TP	A TO Blk Stl							
23	Bailey Greenberg	f	3-12	0-4	1-2	1	3	4	2	7	1	4	1	0	34
24	Nik Metzler	f	4-13	0-1	0-0	1	4	5	3	8	1	1	0	0	29
01	Keishana Washington	g	0-4	0-2	1-2	1	3	4	2	1	0	0	0	0	24
11	Aubree Brown	g	3-7	1-2	5-6	4	6	10	0	12	6	2	1	0	34
12	Hannah Nihill	g	2-5	1-3	0-0	0	4	4	0	5	4	3	0	2	22
22	Maura Hendrixson		6-9	4-7	0-0	1	0	1	1	16	0	0	0	5	31
23	Mariah Leonard		2-6	0-0	4-4	3	1	4	2	8	0	0	0	2	17
50	Ana Ferariu		0-2	0-2	0-0	0	1	1	1	0	0	0	0	1	9
Team						2	2	4							
Totals			20-58	6-21	11-14	13	24	37	11	57	15	7	1	10	200

FG % 1st Half: 7-28 25.0% 2nd half: 13-30 43.3% Game: 20-58 34.5%
 3FG % 1st Half: 1-9 11.1% 2nd half: 5-12 41.7% Game: 6-21 28.6%
 FT % 1st Half: 6-8 75.0% 2nd half: 5-6 83.3% Game: 11-14 78.6%

Deadball
Rebounds
3

Delaware 40 • 5-10 | 0-3 CAA

#	Player	Total		3-Ptr	Rebounds					PF	TP	A	TO	Blk	Stl	Min
		FG-FGA	FG-FGA	FT-FTA	Off	Def	Tot									
05	Nicholas, Makeda	f	2-7	0-0	1-2	1	10	11	2	5	1	4	2	1	33	
25	Lawrence, Rebecca	f	1-6	0-2	0-0	1	0	1	0	2	1	3	3	0	20	
02	Gonzales, Abby	g	0-5	0-4	0-0	0	2	2	2	0	3	2	0	1	34	
20	Dickey, Jasmine	g	2-7	0-0	1-2	4	3	7	4	5	0	2	0	0	28	
35	Lewis, Alison	g	4-9	1-2	0-0	0	3	3	2	9	2	0	1	1	18	
04	Lefft, Gadson		0-0	0-0	0-0	0	1	1	1	0	0	0	0	0	1	
04	McBride, Paris		0-2	0-0	0-0	0	0	0	0	0	1	2	0	0	8	
12	Oleary, Lizzie		1-2	0-0	0-0	1	1	2	3	2	0	1	0	0	8	
22	DeFreese, Samone		2-8	0-1	1-2	3	5	8	0	5	2	2	0	1	24	
23	Kargo, Bailey		5-10	2-6	0-0	1	2	3	0	12	1	0	1	0	26	
	Team					3	1	4								
	Totals		17-56	3-15	3-6	17	25	42	14	40	11	16	7	4	200	

2018-19 University of Delaware Women's Basketball | Hofstra | February 17

17 Delaware at Northeastern

Sunday January 20, 2019 | Matthews Arena | Boston, Mass.

Delaware 62 • 6-11 | 1-4 CAA

#	Player	Total		3-Ptr		Rebounds		PF	TP	A	TO	Blk	Stl	Min
		FG-FGA	FG-FGA	FT-FTA	FT-FTA	Off	Def							
12	Oleary, Lizzie	r	1-3	0-0	1-2	0	1	1	5	3	1	1	0	20
22	DeFreese, Samone	r	1-9	0-1	5-6	2	7	9	4	7	3	0	2	33
25	Lawrence, Rebecca	r	2-5	0-1	0-0	3	3	6	1	4	0	2	4	29
02	Gonzales, Abby	g	4-8	2-4	4-4	0	4	4	1	14	2	2	0	25
23	Kargo, Bailey	g	7-14	4-10	0-0	0	0	0	3	18	1	3	0	28
04	McBride, Paris	g	2-10	0-3	0-0	0	1	1	2	4	6	6	0	26
20	Dickey, Jasmine	g	5-11	0-0	0-2	6	4	10	3	10	0	4	3	31
35	Lewis, Alison	g	1-1	0-0	0-0	0	1	1	2	0	0	1	0	8
Team						3	2	5						
Totals			23-61	6-19	10-14	14	23	37	20	62	13	21	8	200

FG % 1st Half: 13-34 38.2% 2nd half: 10-27 37.0% Game: 23-61 37.7%
 3FG % 1st Half: 2-9 22.2% 2nd half: 4-10 40.0% Game: 6-19 31.6%
 FT % 1st Half: 7-8 87.5% 2nd half: 3-6 50.0% Game: 10-14 71.4%

Deadball Rebounds 1

Northeastern 75 • 13-4 | 3-3 CAA

#	Player	Total		3-Ptr		Rebounds		PF	TP	A	TO	Blk	Stl	Min
		FG-FGA	FG-FGA	FT-FTA	FT-FTA	Off	Def							
12	Dublin, Ayanna	r	2-5	0-0	0-0	1	3	4	4	4	3	0	0	19
24	Giacone, Gabby	r	5-13	0-0	2-4	4	4	8	3	12	2	2	0	26
13	May, Katie	g	1-4	0-1	0-0	0	3	3	2	2	2	0	1	5
14	Todd, Shannon	g	3-7	0-2	2-2	0	6	6	4	8	2	5	0	1
20	Genco, Jess	g	9-12	7-10	7-7	0	2	2	0	32	2	3	0	2
01	Currence, Kendall	g	0-0	0-0	0-0	0	0	0	0	0	0	0	0	2
03	Zwerling, Zoe	g	0-0	0-0	0-0	0	0	0	0	0	1	1	0	0
04	Hill, Alexis	g	1-3	0-0	3-4	2	0	2	1	5	0	2	0	1
11	Clark, Stella	g	4-10	2-5	0-0	0	7	7	3	10	5	5	0	1
42	Aho, Rachel	g	1-1	0-0	0-0	0	0	0	0	2	0	0	0	4
Team						1	0	1						
Totals			26-55	9-18	14-17	8	25	33	17	75	17	18	1	200

FG % 1st Half: 16-27 59.3% 2nd half: 10-28 35.7% Game: 26-55 47.3%
 3FG % 1st Half: 7-13 53.8% 2nd half: 2-5 40.0% Game: 9-18 50.0%
 FT % 1st Half: 5-6 83.3% 2nd half: 9-11 81.8% Game: 14-17 82.4%

Deadball Rebounds 1,2

Officials: Kathy Lonergan, Starr Jefferson, Elizabeth Kuzneski
 Technical fouls: Delaware-None. Northeastern-None.
 Attendance: 365

Score by periods	1st	2nd	3rd	4th	Total
Delaware	18	17	21	6	62
Northeastern	19	25	21	10	75

Last FG - DELAWARE 4th-01:39, NU 4th-00:36.
 Largest lead - DELAWARE by 6 1st-01:12, NU by 15 4th-01:49.
 DELAWARE led for 06:36, NU led for 32:05. Game was tied for 01:12.

Points	In	Off	2nd	Fast	Bench
DELAWARE	24	22	10	2	16
NU	26	20	7	7	17

Score tied - 2 times.
 Lead changed - 7 times.

18 Delaware 65, UNCW 53

Friday, January 25, 2019 | Bob Carpenter Center | Newark, Del.

UNCW 53 • 11-6 | 4-2 CAA

#	Player	Total		3-Ptr		Rebounds		PF	TP	A	TO	Blk	Stl	Min
		FG-FGA	FG-FGA	FT-FTA	FT-FTA	Off	Def							
24	Chinyere Bell	r	1-5	0-0	1-6	3	3	6	3	3	2	4	0	21
04	Shrita Parker	g	3-15	3-5	1-2	2	2	4	0	10	4	3	0	35
05	GiGi Smith	g	9-18	1-3	1-1	3	6	9	4	20	0	5	0	2
10	Ahyiona Vason	g	1-3	1-2	2-2	0	1	1	2	5	1	1	0	31
13	Lacey Suggs	g	2-6	1-3	1-2	1	4	5	4	6	2	3	0	27
00	Ashli Jeune	g	0-2	0-2	0-0	2	1	3	0	0	0	0	0	3
01	Paige Powell	g	1-2	0-0	0-2	1	2	3	2	2	1	0	0	12
02	Moriah Crisp	g	0-0	0-0	0-0	0	0	0	0	0	1	3	0	11
14	Timber Tate	g	2-6	1-5	0-0	0	1	1	2	5	0	0	0	19
22	Zhaneia Thybulle	g	0-0	0-0	0-0	0	0	0	0	0	0	0	0	0+
31	Jessica Mitchell	g	0-0	0-0	0-0	0	0	0	0	0	0	0	0	0+
32	Carol-Anne Obusek	g	1-2	0-0	0-0	2	0	2	3	2	0	2	0	8
Team						0	3	3						
Totals			20-59	7-20	6-15	14	23	37	20	53	15	21	0	200

FG % 1st Half: 10-28 35.7% 2nd half: 10-31 32.3% Game: 20-59 33.9%
 3FG % 1st Half: 4-11 36.4% 2nd half: 3-9 33.3% Game: 7-20 35.0%
 FT % 1st Half: 4-6 66.7% 2nd half: 2-9 22.2% Game: 6-15 40.0%

Deadball Rebounds 6

Delaware 65 • 7-11 | 2-4 CAA

#	Player	Total		3-Ptr		Rebounds		PF	TP	A	TO	Blk	Stl	Min
		FG-FGA	FG-FGA	FT-FTA	FT-FTA	Off	Def							
12	Oleary, Lizzie	r	1-3	0-0	1-2	0	3	3	3	3	1	2	0	16
22	DeFreese, Samone	r	10-19	0-1	6-6	5	6	11	2	26	3	1	0	30
25	Lawrence, Rebecca	r	2-5	0-0	0-0	3	2	5	4	4	0	0	2	23
02	Gonzales, Abby	g	1-6	1-5	1-4	0	2	2	3	4	5	5	0	3
23	Kargo, Bailey	g	1-4	1-3	0-0	1	2	3	3	3	1	1	0	19
04	McBride, Paris	g	3-8	0-1	0-0	1	2	3	0	6	1	2	0	3
05	Nicholas, Makeda	g	4-9	0-0	3-4	2	4	2	4	11	0	1	1	25
20	Dickey, Jasmine	g	0-1	0-0	0-0	0	3	3	4	0	1	2	2	15
35	Lewis, Alison	g	4-8	0-0	0-0	2	1	3	1	8	1	1	0	2
Team						1	5	6						
Totals			26-63	2-10	11-16	15	28	43	21	65	13	15	5	200

FG % 1st Half: 12-30 40.0% 2nd half: 14-33 42.4% Game: 26-63 41.3%
 3FG % 1st Half: 0-3 0.0% 2nd half: 2-7 28.6% Game: 2-10 20.0%
 FT % 1st Half: 4-4 100.0% 2nd half: 7-12 58.3% Game: 11-16 68.8%

Deadball Rebounds 4

Officials: Angel Stanton, Angela Lewis, Luis Gonzales
 Technical fouls: UNCW-None. Delaware-None.
 Attendance: 1633

Score by periods	1st	2nd	3rd	4th	Total
UNCW	13	15	11	14	53
Delaware	14	14	19	18	65

Last FG - UNCW 4th-03:22, DELAWARE 4th-01:34.
 Largest lead - UNCW by 5 1st-02:18, DELAWARE by 13 4th-06:44.
 UNCW led for 04:56, DELAWARE led for 31:19. Game was tied for 03:10.

Points	In	Off	2nd	Fast	Bench
UNCW	22	7	0	5	9
DELAWARE	34	18	14	10	25

Score tied - 4 times.
 Lead changed - 6 times.

19 Delaware 74, College of Charleston 50

Sunday, January 27, 2019 | Bob Carpenter Center | Newark, Del.

Col. of Charleston 50 • 5-13 | 1-5 CAA

#	Player	Total		3-Ptr		Rebounds		PF	TP	A	TO	Blk	Stl	Min
		FG-FGA	FG-FGA	FT-FTA	FT-FTA	Off	Def							
15	Arynn Eady	r	3-4	0-0	0-0	5	3	8	3	6	0	1	2	14
00	Bri Sullivan	r	0-1	0-0	0-0	0	0	0	1	0	0	1	0	9
02	Darien Huff	g	3-12	2-8	0-0	1	2	3	2	8	2	3	0	1
23	Tyler Collins	g	3-13	2-8	0-0	1	3	4	0	8	3	4	0	37
25	Deja Ford	g	2-11	1-6	5-8	1	4	5	3	10	1	3	1	25
00	Madison Taylor	g	0-3	0-2	1-2	1	2	3	5	1	1	2	1	2
03	Latrice Perkins	g	2-6	0-1	4-4	4	2	6	3	8	0	1	0	2
21	Baileigh Larson	g	2-7	0-0	0-0	0	3	3	5	4	1	2	1	0
04	Lexi Maddox	g	0-0	0-0	0-0	0	0	0	0	0	0	1	0	1
42	Ericka Broughton	g	2-7	0-0	1-2	2	4	6	1	5	1	0	0	1
Team						3	3	6						
Totals			17-64	5-25	11-16	18	26	44	23	50	9	18	5	200

FG % 1st Half: 9-32 28.1% 2nd half: 8-32 25.0% Game: 17-64 26.6%
 3FG % 1st Half: 2-10 20.0% 2nd half: 3-15 20.0% Game: 5-25 20.0%
 FT % 1st Half: 6-8 75.0% 2nd half: 5-8 62.5% Game: 11-16 68.8%

Deadball Rebounds 1

Delaware 74 • 8-11 | 3-4 CAA

#	Player	Total		3-Ptr		Rebounds		PF	TP	A	TO	Blk	Stl	Min
		FG-FGA	FG-FGA	FT-FTA	FT-FTA	Off	Def							
12	Oleary, Lizzie	r	1-4	0-0	3-4	0	6	6	1	5	1	0	1	20
22	DeFreese, Samone	r	4-10	0-0	6-7	0	6	6	3	14	4	1	0	27
25	Lawrence, Rebecca	r	5-12	0-2	0-1	2	9	11	2	10	0	1	4	2
02	Gonzales, Abby	g	2-6	2-4	0-0	0	0	0	0	6	3	1	0	2
23	Kargo, Bailey	g	1-3	0-1	0-0	1	1	2	1	2	0	2	0	2
04	McBride, Paris	g	5-8	1-2	1-2	2	1	3	2	12	3	2	0	2
05	Nicholas, Makeda	g	1-4	0-0	2-2	1	4	5	3	4	3	1	0	1
20	Dickey, Jasmine	g	5-6	0-0	7-8	1	3	4	1	17	1	1	2	3
35	Lewis, Alison	g	0-4	0-0	4-4	0	1	1	1	4	0	2	0	2</

21 Delaware 74, Elon 63

Sunday February 3, 2019 | Schar Center | Elon, N.C.

Delaware 74 • 10-11 | 5-4 CAA

#	Player	Total		3-Ptr	Rebounds			PF	TP	A TO Blk Stl				Min
		FG-FGA	FT-FTA	FG-FGA	Off	Def	Tot							
12	Oleary, Lizzie	f 1-4	0-0	0-2	3	1	4	3	2	0	2	0	0	14
22	DeFreese, Samone	f 5-13	0-0	6-7	3	9	12	1	16	6	2	0	1	30
25	Lawrence, Rebecca	f 4-6	2-2	0-0	3	3	3	1	10	0	2	4	0	28
02	Gonzales, Abby	g 4-7	4-6	3-4	1	0	1	1	15	0	3	0	0	30
23	Kargo, Bailey	g 2-4	1-1	0-0	0	1	1	1	5	2	1	1	0	23
04	McBride, Paris	2-3	0-1	3-4	0	2	2	3	7	2	2	0	0	22
05	Nicholas, Makeda	3-4	0-0	0-0	1	7	8	3	6	2	1	0	1	20
20	Dickey, Jasmine	0-5	0-0	0-2	2	2	4	0	0	1	2	0	3	17
35	Lewis, Alison	5-9	1-1	2-2	3	2	5	3	13	2	4	0	2	16
Team					1	0	1							
Totals		26-55	8-11	14-21	14	27	41	16	74	15	19	5	7	200

FG % 1st Half: 11-27 40.7% 2nd half: 15-28 53.6% Game: 26-55 47.3% Deadball Rebounds 3
 3FG % 1st Half: 2-4 50.0% 2nd half: 6-7 85.7% Game: 8-11 72.7%
 FT % 1st Half: 6-8 75.0% 2nd half: 8-13 61.5% Game: 14-21 66.7%

Elon 63 • 7-13 | 2-7 CAA

#	Player		Total		3-Ptr		Rebounds			PF	TP					Min
			FG-FGA	FT-FTA	FG-FGA	FT-FTA	Off	Def	Tot			A	TO	Blk	Stl	
13	Powell, Jaylin	f	4-14	3-6	1-2	2	4	6	1	12	2	3	0	0	34	
42	Maupin, Emily	f	3-9	0-0	3-7	5	2	7	2	9	0	2	2	0	31	
00	Perpignan, Brie	g	7-13	0-0	6-7	0	0	0	2	20	4	0	1	2	33	
21	Colon, Ariel	g	4-8	0-3	0-0	1	2	3	3	8	1	3	0	1	20	
22	Mercer, Lexi	g	2-9	1-6	0-0	0	3	3	2	5	0	1	0	2	34	
01	Munford, Saadia		1-1	0-0	0-0	1	1	2	2	2	2	2	0	0	11	
02	Liles, Kayla		0-3	0-0	0-0	1	1	2	5	0	1	2	0	0	14	
03	Popovic, Anna		2-7	1-2	2-2	4	2	6	2	7	1	1	0	1	18	
30	Traore, Tyja		0-0	0-0	0-0	0	0	0	0	0	0	0	0	0	2	
52	Ryan, Micaela		0-0	0-0	0-0	0	0	0	0	0	0	0	2	0	3	
Team						2	4	6								

FG % 1st Half: 11-29 37.9% 2nd half: 12-35 34.3% Game: 23-64 35.9% Deadball Rebounds 4
 3FG % 1st Half: 2-7 28.6% 2nd half: 3-10 30.0% Game: 5-17 29.4%
 FT % 1st Half: 7-12 58.3% 2nd half: 5-6 83.3% Game: 12-18 66.7%

Officials: Hillary Harwell, Michael Johnson, Carithia Rivers

Technical fouls: Delaware-None. Elon-None.

Attendance: 416

Elon #2 fouls out @ 5:26 4th qtr

Score by periods						Points	In Paint	Off T/O	2nd Chance	Fast Break	Bench
1st	2nd	3rd	4th	Total							
Delaware						16	14	23	21	74	
Elon						11	20	17	15	63	

Last FG - DELAWARE 4th-01:45, ELON 4th-00:16.

Largest lead - DELAWARE by 13 4th-00:18, ELON by 4 2nd-07:05.

DELAWARE led for 25:47. ELON led for 06:31. Game was tied for 07:11.

Score tied - 7 times.
Lead changed - 8 times.**22 Drexel 58, Delaware 41**

Sunday, February 10, 2019 | Daskalakis Athletic Center | Philadelphia, Pa.

Delaware 41 • 10-12 | 5-5 CAA

#	Player	Total		3-Ptr	Rebounds							PF	TP	A TO Blk Stl				Min
		FG-FGA	FT-FTA	FG-FGA	Off	Def	Tot	Off	Def	Tot	Off			Def	Tot			
12	Oleary, Lizzie	f	3-3	0-0	0-0	2	6	8	3	6	1	1	0	0	23			
22	DeFreese, Samone		1-11	0-1	1-3	1	4	5	0	3	2	2	0	2	28			
25	Lawrence, Rebecca	f	4-5	0-0	0-0	2	1	3	2	8	1	0	0	0	20			
02	Gonzales, Abby	g	1-3	0-2	0-0	0	0	0	1	2	2	4	0	0	31			
23	Kargo, Bailey	g	0-0	0-0	1-2	0	0	0	1	1	1	1	0	0	18			
04	McBride, Paris		0-5	0-3	2-2	1	1	2	3	2	2	3	0	1	27			
05	Nicholas, Makeda		6-12	0-0	1-2	2	5	7	2	13	2	5	1	1	31			
35	Lewis, Alison		3-9	0-2	0-0	2	0	2	1	6	1	2	0	0	22			
Team						1	2	3			1							
Totals			18-48	0-8	5-9	11	19	30	13	41	12	19	1	4	200			

FG % 1st Half: 10-26 38.5% 2nd half: 8-22 36.4% Game: 18-48 37.5% Deadball Rebounds 3,1
 3FG % 1st Half: 0-4 0.0% 2nd half: 0-4 0.0% Game: 0-8 0.0%
 FT % 1st Half: 3-5 60.0% 2nd half: 2-4 50.0% Game: 5-9 55.6%

Drexel 58 • 16-5 | 8-2 CAA

#	Player	Total		3-Ptr	Rebounds			PF	TP	A	TO	Blk	Stl	Min	
		FG-FGA	FT-FTA	FG-FGA	Off	Def	Tot								
23	Bailey Greenberg	f	9-18	1-5	4-6	1	6	7	1	23	1	4	0	1	38
24	Niki Metzel	f	1-4	0-0	0-0	1	3	4	3	2	2	1	0	0	14
01	Keishana Washington	g	3-8	0-2	0-0	1	0	1	0	6	1	1	0	2	25
11	Aubree Brown	g	3-5	1-1	0-0	1	4	5	2	7	3	0	0	2	28
12	Hannah Nihill	g	5-8	2-4	0-0	0	2	2	1	12	1	3	0	2	30
04	Kayla Bacon		1-2	0-0	0-0	0	0	0	1	2	0	1	0	0	9
10	Eline Maesschalck		0-0	0-0	0-0	0	0	0	0	0	0	0	0	0	2
20	Kate Connolly		0-0	0-0	0-0	0	0	0	2	0	0	1	0	0	5
22	Maura Hendrixson		1-4	1-4	0-0	0	3	3	2	3	3	0	0	0	18
30	Mariah Leonard		0-2	0-0	0-0	2	2	4	1	0	0	1	0	2	19
34	Tereza Kracikova		1-1	0-0	1-1	1	0	1	3	3	0	1	0	0	5
50	Ana Ferariu		0-0	0-0	0-0	0	0	0	1	0	2	0	0	0	7
	Team					1	0	1				1			
Totals			24-52	5-16	5-7	8	20	28	17	58	13	14	0	9	200

FG % 1st Half: 15-27 55.6% 2nd half: 9-25 36.0% Game: 24-52 46.2% Deadball Rebounds 2
 3FG % 1st Half: 4-10 40.0% 2nd half: 1-6 16.7% Game: 5-16 31.3%
 FT % 1st Half: 2-3 66.7% 2nd half: 3-4 75.0% Game: 5-7 71.4%

Officials: Meadow Overstreet, Timothy Bryant, Kevin Sparrock

Technical fouls: Delaware-None. Drexel-None.

Attendance: 821

Score by periods						Points	In Paint	Off T/O	2nd Chance	Fast Break	Bench
1st	2nd	3rd	4th	Total							
Delaware						10	13	11	7	41	
Drexel						18	18	13	9	58	

Last FG - DELAWARE 4th-00:14, DREXEL 4th-02:25.

Largest lead - DELAWARE by 2 1st-09:03, DREXEL by 22 4th-04:36.

DELAWARE led for 01:00. DREXEL led for 37:57. Game was tied for 00:57.

Score tied - 0 times.
Lead changed - 1 time.**23 Delaware 77, Northeastern 63**

Friday, February 15, 2019 | Bob Carpenter Center | Newark, Del.

Northeastern 63 • 15-8 | 5-7 CAA

#	Player	Total		3-Ptr		Rebounds			PF	TP	A TO Blk Stl				Min
		FG-FGA	FT-FTA	FG-FGA	FT-FTA	Off	Def	Tot							
24	Giacone, Gabby	f	2-9	0-0	0-0	1	3	4	3	4	0	1	1	0	18
11	Clark, Stella	g	6-10	2-3	0-2	2	2	4	5	14	2	4	0	1	32
12	Dublin, Ayanna	g	2-10	0-0	5-8	5	3	8	5	9	1	4	0	3	24
14	Todd, Shannon	g	6-16	3-10	0-0	0	4	4	2	15	0	0	0	0	39
20	Genco, Jess	g	3-7	2-5	3-4	3	2	5	4	11	7	1	0	0	40
01	Currence, Kendall		2-5	0-3	2-2	1	0	1	4	6	2	1	0	0	23
03	Zwerling, Zoe		0-1	0-1	0-0	1	1	2	1	0	1	0	0	0	4
04	Hill, Alexis		0-1	0-0	1-2	0	0	0	0	1	0	0	0	0	7
21	Michel, Samantha		0-2	0-0	1-2	0	2	2	3	1	0	1	2	0	7
23	Redcross, Courtney		0-0	0-0	2-2	0	0	0	2	2	0	2	0	0	6
	Team					0	6	6							
			21-61	7-22	14-22	13	23	36	29	63	13	14	3	4	200

FG % 1st Half: 9-28 32.1% 2nd half: 12-33 36.4% Game: 21-61 34.4% Deadball Rebounds 4
 3FG % 1st Half: 2-10 20.0% 2nd half: 5-12 41.7% Game: 7-22 31.8%
 FT % 1st Half: 4-6 66.7% 2nd half: 10-16 62.5% Game: 14-22 63.6%

Delaware 77 • 11-12 | 6-5 CAA

#	Player
---	--------

2018-19 Delaware Women's Basketball
Delaware Combined Team Statistics (as of Feb 15, 2019)
All games

RECORD:	OVERALL	HOME	AWAY	NEUTRAL
ALL GAMES	11-12	5-5	4-5	2-2
CONFERENCE	6-5	3-3	3-2	0-0
NON-CONFERENCE	5-7	2-2	1-3	2-2

##	Player	gp-gs	min	avg	Total		3-Point		F-Throw		Rebounds				pf	dq	a	to	blk	stl	pts	avg
					fg-fga	fg%	3fg-fga	3fg%	ft-fga	ft%	off	def	tot	avg								
22	DeFreese, Samone	21-15	570	27.1	90-213	.423	2-12	.167	46-67	.687	49	93	142	6.8	55	3	47	43	1	23	228	10.9
02	Gonzales, Abby	23-23	745	32.4	67-195	.344	44-122	.361	30-38	.789	10	49	59	2.6	44	1	67	53	2	32	208	9.0
05	Nicholas, Makeda	22-12	527	24.0	75-200	.375	0-3	.000	32-53	.604	37	94	131	6.0	56	2	29	42	32	23	182	8.3
20	Dickey, Jasmine	20-14	542	27.1	59-182	.324	0-1	.000	41-70	.586	60	113	173	8.7	61	3	16	49	18	29	159	8.0
23	Kargo, Bailey	21-11	406	19.3	52-126	.413	21-58	.362	5-9	.556	5	16	21	1.0	26	0	21	27	3	10	130	6.2
25	Lawrence, Rebecca	22-18	450	20.5	52-128	.406	3-16	.188	7-10	.700	35	50	85	3.9	38	2	6	23	36	10	114	5.2
24	Mascaro, Justina	11-2	152	13.8	21-50	.420	3-13	.231	10-16	.625	15	9	24	2.2	19	0	9	13	2	10	55	5.0
04	McBride, Paris	23-5	515	22.4	36-132	.273	4-33	.121	37-53	.698	9	31	40	1.7	52	1	71	56	0	27	113	4.9
35	Lewis, Alison	22-7	325	14.8	44-122	.361	4-9	.444	14-20	.700	27	28	55	2.5	32	0	28	24	4	25	106	4.8
00	Lefft, Gadson	12-1	108	9.0	19-36	.528	0-0	.000	13-22	.591	23	34	57	4.8	21	1	4	3	5	7	51	4.3
12	Oleary, Lizzie	23-7	260	11.3	24-57	.421	0-0	.000	10-20	.500	23	37	60	2.6	53	1	11	30	5	9	58	2.5
Team											44	53	97					6				
Total.....		23	4600		539-1441	.374	81-267	.303	245-378	.648	337	607	944	41.0	457	14	309	369	108	205	1404	61.0
Opponents.....		23	4600		494-1353	.365	127-424	.300	309-446	.693	315	618	933	40.6	409	-	292	400	85	174	1424	61.9

TEAM STATISTICS	DELAWARE	OPP	Date	Opponent	Score	Att.
SCORING	1404	1424	!	11/09/18	at Northern Iowa	L 67-79 1295
Points per game	61.0	61.9	!	11/16/18	vs Montana State	L 60-69 625
Scoring margin	-0.9	-	!	11/17/18	vs Nicholls	w 71-56 532
FIELD GOALS-ATT	539-1441	494-1353		11/20/18	at Delaware State	w 85-77 153
Field goal pct	.374	.365	^	11/23/18	vs Bradley	L 47-59 472
3 POINT FG-ATT	81-267	127-424	^	11/24/18	vs Lafayette	w 65-47 415
3-point FG pct	.303	.300		12/02/18	at Boston Univ.	L 61-72 362
3-pt FG made per game	3.5	5.5		12/06/18	at George Mason	L 46-72 616
FREE THROWS-ATT	245-378	309-446		12/09/18	UCF	L 60-71 1043
Free throw pct	.648	.693		12/18/18	GARDNER-WEBB	w 69-45 869
F-Throws made per game	10.7	13.4		12/20/18	MARYLAND	L 53-77 1423
REBOUNDS	944	933		12/28/18	SAINT JOSEPH'S	w 48-39 1368
Rebounds per game	41.0	40.6	*	01/04/19	JAMES MADISON	L 43-68 1172
Rebounding margin	+0.5	-	*	01/06/19	TOWSON	L 48-56 1225
ASSISTS	309	292	*	01/13/19	DREXEL	L 40-57 1156
Assists per game	13.4	12.7	*	01/18/19	at Hofstra	w 78-59 2393
TURNOVERS	369	400	*	01/20/19	at Northeastern	L 62-75 365
Turnovers per game	16.0	17.4	*	01/25/19	UNCW	w 65-53 1633
Turnover margin	+1.3	-	*	01/27/19	COL. OF CHARLESTON	w 74-50 1212
Assist/turnover ratio	0.8	0.7	*	02/01/19	at William & Mary	w 70-59 634
STEALS	205	174	*	02/03/19	at Elon	w 74-63 416
Steals per game	8.9	7.6	*	02/10/19	at Drexel	L 41-58 821
BLOCKS	108	85	*	02/15/19	NORTHEASTERN	w 77-63 1478
Blocks per game	4.7	3.7				
ATTENDANCE	12579	9099				
Home games-Avg/Game	10-1258	9-784				
Neutral site-Avg/Game	-	4-511				

! = Preseason WNIT

^ = FAU Thanksgiving Tournament

* = CAA game

Home games played at the Bob Carpenter Center

Score by Periods	1st	2nd	3rd	4th	Totals
Delaware	326	297	387	394	1404
Opponents	332	365	361	366	1424