



2018-19 DELAWARE

WOMEN'S BASKETBALL

Maggie Hayon, Assistant Athletics Communications Director | O: 302-831-6389 | C: 920-912-6635 | mhayon@udel.edu
University of Delaware | Bob Carpenter Center | 631 S. College Ave. | Newark, DE 19716

SCHEDULE/RESULTS

N9	at Northern Iowa ^	9:30 p.m.
N11-17	Two games TBD ^	
N20	at Delaware State	6 p.m.
N23	vs. Bradley ^	2:30 p.m.
N24	vs. FAU/Lafayette ^	tbd
D2	at Boston University	1 p.m.
D6	at George Mason	7 p.m.
D9	UCF	5:30 p.m.
D18	Gardner-Webb	7 p.m.
D20	Maryland	3 p.m.
D28	Saint Joseph's	7 p.m.
J4	James Madison *	7 p.m.
J6	Towson *	2 p.m.
J13	Drexel *	2 p.m.
J18	at Hofstra *	11:30 p.m.
J20	at Northeastern *	2 p.m.
J25	UNCW *	Noon
J27	College of Charleston *	1 p.m.
F1	at William & Mary *	7 p.m.
F3	at Elon *	2 p.m.
F10	at Drexel *	2 p.m.
F15	Northeastern *	7 p.m.
F17	Hofstra *	2 p.m.
F22	at College of Charleston *	6:30 p.m.
F24	at UNCW *	2 p.m.
M1	Elon *	7 p.m.
M3	William & Mary *	2 p.m.
M7	at Towson *	2 p.m.
M9	at James Madison *	2 p.m.

CAA Tournament at Delaware

M13	CAA First Round	
M14	CAA Quarterfinals	
M15	CAA Semifinals	
M16	CAA Finals	

- Preseason WNIT

^ - FAU Thanksgiving Tournament * CAA Game
Home games played at Bob Carpenter Center
Times/dates subject to change
All times Eastern

#BLUEHENS ONLINE

Website	BlueHens.com
Facebook	facebook.com/DelawareBlueHens
	facebook.com/DelawareWomensBasketball
Instagram	UDBlueHens
	DelawareWBB
Twitter	@DelawareWBB
	@CoachAdair
YouTube	youtube.com/UDBlueHens

GAMEDAY CENTRAL

PRESEASON WNIT

GAME ONE | University of Delaware at University of Northern Iowa



Delaware (0-0 | 0-0 CAA)

BLUE HENS

DateFriday, November 9, 2018
Time9:30 p.m. Eastern
LocationMcLeod Center
.....Cedar Falls, Iowa
RadioFox Sports 1290/1410 WDOV
.....Nate Clayberg (pxp)
TVn/a
StreamESPN3
Brad Wells (pxp), Jacqui Kalin (color)
Live StatsUNIPanthers.com
Twitter@DelawareWBB



Northern Iowa (0-0 | 0-0 MVC)

PANTHERS

THE GAME

- » Friday serves as the season opener for both the Blue Hens and Panthers.
- » Delaware is competing in the Preseason WNIT for the fifth time (2000, 2002, 2007, 2012).
- » With a first round win and a Marquette win, the Blue Hens will travel to Milwaukee, Wis. and play the Golden Eagles on Sunday at 2 p.m. ET.
- » With a first round win and a Marquette loss, the Blue Hens would return home to host Montana State on Sunday at 7 p.m. ET.
- » With a first round loss, the Blue Hens would play Nov. 16-17 in the consolation bracket.
- » Delaware travels to the state of Iowa for the first time since the 1997-98 season when the Blue Hens took on Brown (W, 73-66) and Iowa State (L, 80-62) as part of the Iowa State Cyclone Classic.

THE SERIES

- » Delaware and Northern Iowa have never met in women's basketball history.

THE COACHES

- » **Natasha Adair** (South Florida '94) is in her second season at Delaware after being named just the fourth women's basketball coach in the program's illustrious history on May 14, 2017.
- » Adair joined the Blue Hens from Georgetown, where she turned around a four-win Hoya program to a postseason contender in three seasons as head coach.
- » **Tanya Warren** (Creighton '88) is entering her 12th season as the head coach of the Panthers. Warren is a three-time Missouri Valley Conference Coach of the Year and has guided the Panthers to league regular season titles in 2011 and 2016.



'17-18 STAT COMPARISON

	UD	UNI
Record	19-13	19-14
PPG	65.8	63.3
Opp PPG	60.4	58.1
Margin	+5.4	+5.3
FG %	.406	.386
Opp FG %	.357	.382
3pt %	.271	.318
Opp 3pt %	.279	.279
FT %	.688	.723
Opp FT %	.704	.711
RPG	42.1	39.4
Opp RPG	37.6	34.7
Margin	+4.5	-0.2
APG	13.5	14.5
TOPG	15.9	14.6
A/TO	0.8	-0.2
SPG	7.6	6.3
BPG	5.2	2.4
FPG	18.0	17.0

PROJECTED DELAWARE STARTERS

Pos.	No.	Name	Ht.	Yr.	PPG	RPG	APG	SPG	BPG	MPG
G	2	Abby Gonzales	5-7	Jr.	8.6	3.5	4.0	1.5	0.1	32.5
G	24	Justina Mascaro	5-11	So.	3.6	2.3	1.1	0.3	0.1	13.9
F	22	Samone DeFreese	6-0	Jr.	11.3	7.4	1.9	1.3	0.3	30.5
F	25	Rebecca Lawrence	6-3	Jr.	5.0	3.8	0.7	0.3	1.6	22.8
F	5	Makeda Nicholas	6-1	Gr.	11.3	4.3	2.3	0.8	1.8	22.8

@DELAWAREWBB

QUICK FACTS

Location.....Newark, Del. 19716
 Founded.....1743
 Enrollment18,948 Undergraduate
 NicknameBlue Hens
 Official MascotYoUDee
 Colors.....Blue (PMS 2945c) & Yellow (PMS 109c)
 Affiliation.....NCAA Division I
 Conference.....Colonial Athletic Association (CAA)
 Home FacilityBob Carpenter Center | 5,000

ADMINISTRATION

PresidentDennis Assanis
 NCAA Faculty Delegate.....Tammy Anderson
 Director of Athletics.....Chrissi Rawak
 Sport Administrator/SWAJen Vining-Smith

2017-18 SEASON IN REVIEW

Overall Record.....19-13
 CAA Record | Finish11-7 | Fourth
 Home | Away | Neutral9-4 | 8-8 | 2-1
 Postseason Play.....1-2
Fell to Drexel, 58-53, in CAA Semifinals
Fell to Georgetown, 67-57, in Postseason WNIT

2018-19 SEASON PREVIEW

Starters Returning/Lost4/1*
 Letterwinners Returning/Lost11/3
 Newcomers/Redshirts3
 Top Returnees ... Samone DeFreese, Abby Gonzales,
 Makeda Nicholas, Bailey Kargo
 Key lossesNicole Enabosi*
 Team Captainstba
** Nicole Enabosi out due to injury*

PROGRAM HISTORY

First Year of Women's Basketball 1971-72 (8-4)
 All-Time Record762-506 (.601)
 All-Time CAA Record 204-100 (.671)
 All-Time CAA Tournament Record 25-16 (.610)
 CAA Titles | Last..... 2 | 2013
 NCAA Championshipsn/a
 NCAA Tournament Appearances | Last..... 4 | 2013
 All-Time NCAA Tournament Record.....3-4
 WNIT Championships.....n/a
 WNIT Postseason Appearances | Last 8 | 2018
 All-Time WNIT Postseason Record.....0-8

2018-19 DELAWARE BLUE HENS

No.	Name	Cl.	Pos.	Ht.	Hometown/Previous School
0	Gadson Lefft	r-Sr.	F/G	6-0	Lake Wylie, S.C./Heathwood Hall/Phillips Acad. (Clemson)
1	Lolo Davenport *	Fr.	G/F	6-1	Plano, Texas/Plano
2	Abby Gonzales	Jr.	G	5-7	Wexford, Pa./North Allegheny
4	Paris McBride	Fr.	G	5-4	Woodbridge, Va./Woodbridge
5	Makeda Nicholas	Gr.	F	6-1	North Babylon, N.Y./North Babylon
12	Lizzie Oleary	So.	F	6-2	Abington, Pa./Abington Senior
20	Jasmine Dickey	Fr.	G/F	5-10	Baltimore, Md./Catonsville
22	Samone DeFreese	Jr.	F	6-0	Bergenfield, N.J./Berkshire (Mass.)
23	Bailey Kargo	Jr.	G	5-10	Greensboro, N.C./Walter Hines Page
24	Justina Mascaro	So.	G	5-11	Bethel Park, Pa./Bethel Park
25	Rebecca Lawrence	Jr.	F	6-3	Ridgefield, Conn./Ridgefield
30	Kayla Shaw ^	r-So.	G	5-10	Scottsdale, Ariz./Chaparral (Monmouth)
33	Nicole Enabosi *	Sr.	F	6-0	Gaithersburg, Md./Our Lady of Good Counsel
35	Alison Lewis	r-Sr.	G	5-9	Kennett Square, Pa./Sanford (Providence)
44	Erin Antosh	So.	F/C	6-3	Townsend, Mass./Lawrence Academy

© = Captains ^ = Will sit out 2018-19 campaign due to NCAA transfer regulations * = Will miss season due to injury

COACHING STAFF

HC: Natasha Adair | South Florida '94 | Second Season at UD (19-13) | Seventh Season Overall (91-98)
 AHC: Bob Clark | Towson '84 | Second Season
 AC: Sarah Jenkins (Recruiting Coordinator) | Georgetown '05 | Second Season
 AC: Mykala Walker | Wake Forest '13 | Second Season
 DOBO: Adrienne Eisenhauer | Kansas State '16 | First Season
 ADOBO: David White | North Carolina '11 | Second Season

SUPPORT STAFF

Team Athletic Trainer: Melanee Johnson | Howard '03 | Third Season
 Senior Student Athletic Trainer: Ethan Lennox
 Strength & Conditioning Coach: Joe Baranello | William Paterson '12 | Fourth Season
 Strength & Conditioning Coach: Ted Perlak | Worcester State '01 | Fourth Season
 Athletics Communications: Maggie Hayon | Marquette '08 | Seventh Season | mhayon@udel.edu
 Managers: tba

PRONUNCIATIONS

5 | Makeda Nicholas | muh-KAY-duh 33 | Nicole Enabosi | en-uh-bo-see
 12 | Lizzie Oleary | oh-leer-ee HC | Natasha Adair | aye-dare
 22 | Samone DeFreese | suh-mone AC | Mykala Walker | mic-kay-luh
 24 | Justina Mascaro | mas-care-oh

2017-18 CATEGORY LEADERS

Points.....	18.0.....	Nicole Enabosi
Rebounds.....	11.8.....	Nicole Enabosi
Assists.....	4.0.....	Abby Gonzales
Steals.....	2.0.....	Nicole Enabosi
Blocks.....	1.9.....	Nicole Enabosi
3-pointers.....	1.8.....	Bailey Kargo
FG % (at least 50 Att.).....	.508 (202-398).....	Nicole Enabosi
3pt % (at least 20 Att.).....	.386 (56-145).....	Bailey Kargo
FT % (at least 20 Att.).....	.872 (34-39).....	Bailey Kargo
Minutes.....	34.8.....	Nicole Enabosi

LAST TIME OUT

The Blue Hens made their first postseason appearance since 2014, but ultimately saw their season come to a close in a 67-57 loss to Big East foe Georgetown in the Postseason WNIT on March 16. **Nicole Enabosi** led the Blue Hens offensively with 15 points, finishing the year with double-digit performances in 30 of 32 games. **Samone DeFreese** added eight points and nine rebounds, while **Lizzie Oleary** came off the bench to chip in seven points, four rebounds and a team-high three blocks. Georgetown jumped out to an early 10-2 lead, but a three-pointer from **Bailey Kargo** and a bucket from Enabosi kept the Blue Hens (19-13) close. The Hoyas (16-15) pushed their lead back to eight, but Delaware's defense went into lockdown mode, stifling Georgetown. After back-to-back baskets from DeFreese and **Rebecca Lawrence**, the Hens were within two, 23-21 with 3:17 to play in the first half. The teams would trade baskets for the final minutes with Enabosi getting a layup to go with 47 seconds to play to send the teams into halftime with Georgetown leading 31-28. Georgetown would use an 11-3 run mid-way through the third quarter to push its lead to 12. Down double-digits in the second half, the Blue Hens wouldn't go away. Enabosi connected on back-to-back baskets and **Abby Gonzales** hit a jumper from the corner, to trim the Hoyas lead to just seven points with five minutes to go. Both teams would trade defensive stops, but a three-pointer from Georgetown with 2:30 to play helped the Hoyas secure the victory and advance to the WNIT Second Round.

LAST TIME VS. NORTHERN IOWA

The Blue Hens and Panthers have never faced off in women's basketball history. The two schools have met before in football, women's soccer and volleyball with Delaware holding a 3-1 advantage over Northern Iowa. UD is 2-0 over UNI in football with both wins coming in the FCS Playoffs (2003; 2007). In women's soccer, Delaware posted the 3-2 OT victory in Newark during the 2005 season while Northern Iowa collected the 3-0 volleyball win in Newark in 2011.

DELAWARE KICKS OFF 48TH SEASON OF WOMEN'S BASKETBALL

The 2018-19 season marks the 48th overall in the history of the University of Delaware women's basketball program. During their previous 47 years, the Blue Hens have registered a mark of 762-506 (.601) with 31 winning seasons under four head coaches. Last season, Delaware hit 19 wins for the first time since the 2013-14 campaign when UD was 20-11 overall. Entering the year, Delaware averaged 16.2 wins per in the previous 46 seasons. The Hens had also not won more than 10 CAA games since going 18-0 in 2012-13.

UD IN SEASON OPENERS

The Blue Hens have won 12 of their last 14 season openers and are 25-22 all-time in the first game of the year. Delaware opens on the road for the second straight season.

CAA PRESEASON RANKINGS/HONORS

Delaware is predicted to finish third in the Colonial Athletic Association Preseason Poll with 61 points while James Madison was predicted to win it all in 2019 with 79 points and seven first place votes. Blue Hens junior **Samone DeFreese** was picked as a Preseason All-CAA Second

TRENDS

	Overall	Home	Rd/Ntl
Overall Record			
Conference Record			

SCORING

Leading at half	
Trailing at half	
Tied at half	
Scoring first	
Games decided by five points or less	
Games decided by 6-10 points	
Leading with 2:00 left	
Overtime games	
Double Overtime games	

OFFENSE

UD scores 80+ points	
UD scores 70-79 points	
UD scores 60-69 points	
UD scores <60 points	
Shooting 45% or better	
Shooting less than 45%	
FT % over .700	
Player scoring 30+ points	
Player scoring 20+ points	
Two-plus players in double digit scoring	

DEFENSE

OPP scores 80+ points	
OPP scores 70-79 points	
OPP scores 60-69 points	
OPP scores <60 points	
More steals than OPP	
Less steals than OPP	
Even steals	

REBOUNDING/TURNOVERS

More rebounds than OPP	
Less rebounds than OPP	
Even rebounding	
More TO than OPP	
Less TO than OPP	
Even TO	

MONTHS

November	
December	
January	
February	
March	

DAYS

Sunday	
Monday	
Tuesday	
Wednesday	
Thursday	
Friday	
Saturday	

TIME

Day	
Night (after 5 p.m. local time)	

UNIFORM

Blue	
White	
Pink	

MISCELLANEOUS

UD controls tip	
Following a UD win	
Following a UD loss	

DELAWARE EXTREMES

Largest lead	FG Percentage
Largest deficit	3-pt FG Made
Largest halftime lead	3-pt FG Att.
Largest halftime deficit	3-pt FG Percentage
Largest lead in loss	Free Throws Made
Largest deficit in win	Free Throw Attempts
Largest halftime lead in loss	FT Percentage
Largest halftime deficit in win	Rebounds
Largest lead at home	Assists
Largest deficit at home	Steals
Largest lead on road	Blocks
Largest deficit on road	TO (Most)
Most Points	TO (Fewest)
Field Goals Made	Fouls
Field Goal Attempts	

THE LAST TIME UD...

SCORING

Scored 100+ points:2/27/81 vs. Temple (W, 101-96 ot)
 Allowed 100+ points:2/13/97 at Maine (L, 54-102)
 Held under 40 points:3/12/09 vs. Towson (L, 37-40)
 Held opponent under 40 points:12/22/17 vs. Loyola (W, 71-38)
 Held opponent under 30 points:1/10/13 vs. George Mason (W, 62-27)
 Made 6+ 3-pointers:2/4/18 at Northeastern (6-19)
 Made 0 3-pointers:3/11/16 vs. JMU (0-7)
 Allowed 6+ 3-pointers:3/8/18 vs. Northeastern (10-35)
 Shot .500 FG%:3/3/17 at Towson (.517; 30-58)
 Allowed .500 FG%:2/4/18 at Northeastern (.540)
 Had 5 Players w/10+ Pts:2/28/16 at UNCW (5)

REBOUNDING

Grabbed 60 rebounds:11/14/14, 60 at Lafayette
 Grabbed 50 rebounds:1/26/18, 50 vs. Northeastern
1/19/18, 51 at UNCW
11/26/17, 57 vs. Eastern Illinois
1/15/16, 52 at Charleston
1/9/14, 52 at William & Mary
12/1/13, 52 vs. Howard
 Opponent grabbed 50 rebounds:12/7/15, 53 at George Mason
 Opponent grabbed 60 rebounds:1/8/17, 62 by Elon

OVERTIME GAMES

OT Game Played:3/9/18 at Drexel (L, 58-53)
 ZOT Game Played:11/25/17 vs. Saint Peter's (L, 90-87)

MISCELLANEOUS

Won after trailing at half:1/28/18 vs. UNCW (34-33 -- W, 80-62)
 Lost after leading at half:1/21/18 at Elon (27-23-- L, 64-51)

THE LAST TIME A UD PLAYER...

SCORING

Scored 25-29 points:2/25/18, Nicole Enabosi (26 at James Madison)
 Opponent scored 25-29 points:3/16/18, Cynthia Petke (26, Georgetown)
 Scored 30-39 points:12/7/15, Hannah Jardine (31 at George Mason)
 Opponent scored 30-39 points:11/25/16, Tori Jankoska (32, Michigan State)
 Scored 40-49 points:2/26/12, Elena Delle Donne (42 at Hofstra)
 Opponent 40-49 points:2/26/15, Brie Mobley (46, UNCW)

REBOUNDING

Grabbed 10 rebounds:3/9/18, Samone DeFreese (10 at Drexel)
 Opponent grabbed 10 rebounds:3/9/18, Sara Woods (11, Drexel)
 Grabbed 15 rebounds:2/11/18, Nicole Enabosi (19 vs. Hofstra)
 Opponent grabbed 15 rebounds:3/16/18, Yazmine Belk (16, Georgetown)
 Grabbed 20 rebounds:12/22/17, Nicole Enabosi (20 vs. Loyola)

MISCELLANEOUS

Had 5 blocked shots:2/18/18, Nicole Enabosi (6 vs. Charleston)
 Had 10 assists:11/19/17, Abby Gonzales (10 vs. Boston University)
 Had a double-double:3/9/18, Samone DeFreese (17/10 at Drexel)
 Opponent had a double-double:3/9/18, Gabby Giacone (10/11, Drexel)

Team honoree. DeFreese, a starter a season ago and two-time letter winner for Delaware, saw action in all 32 games last year and was ranked 11th in the CAA with 7.4 rebounds per game, 18th with 30.5 minutes played and 19th with 11.3 points per. The forward logged 19 games with double-digit scoring efforts and seven games with double-digit rebounds with six total double doubles.

FRESH FACES

Delaware welcomes three newcomers to the team while graduating three seniors from last season. Freshmen **Lolo Davenport**, **Jasmine Dickey** and **Paris McBride** join the Hens from successful high school campaigns. Following their NLI signings, head coach **Natasha Adair** stated: "I'm really thrilled with this class. My first recruiting class at the University of Delaware has really shaped out to be a big one. We are signing some of the top players in the country, but the most important thing is that they are all character-first people. And that's a big reason why they're here. They fit into what we're doing, they fit the chemistry of our current players and they'll also help take us to the next level."

NICHOLAS IS BACK

Nearly 11 months after seeing the court for the Blue Hens due to injury, **Makeda Nicholas** will return to the floor against Northern Iowa in her final year of eligibility. Nicholas graduated in May from UD with a Bachelor of Arts degree in psychology and is currently studying to obtain a Master of Arts degree in education. The forward is currently fifth in the Delaware career record books with 118 blocks, 25th all-time with 517 rebounds and 53rd overall with 580 points and is the team's active career leader with 97 games played.

BLUE HENS WITHOUT CAA PLAYER OF THE YEAR; TOP RECRUIT

The Blue Hens were dealt a blow to the roster during the offseason as **Nicole Enabosi**, the 2018 CAA Player of the Year, and incoming freshman **Lolo Davenport** underwent surgery for ACL injuries. Both will return for Delaware during the 2019-20 campaign.

2017-18 CAA/NCAA RANKINGS

Category	CAA	NCAA
Scoring Offense.....	65.8	3.....157
Scoring Defense.....	60.4	4.....68
Scoring Margin.....	+5.4	4.....95
FT %.....	.688	4.....222
FG %.....	.406	3.....156
FG % Def.....	.357	2.....17
3FG/Game.....	3.8	9.....331
3FG %.....	.271	8.....318
3FG % Def.....	.279	1.....21
Rebounds.....	42.1	1.....24
Rebounds (Opp).....	37.6	5.....
Rebounding Margin.....	+4.5	2.....70
Blocks.....	5.2	4.....21
Assists.....	13.5	6.....150
Steals.....	7.6	6.....173
Turnover Margin.....	-0.41	6.....193
Assist/TO Ratio.....	0.8	5.....168
Win/Loss %.....	.594	4.....114

2017-18 RANKED UD PLAYERS

Category	CAA	NCAA
Scoring.....	18.0.....Nicole Enabosi.....	1.....78
.....	11.3.....Samone DeFreese.....	19.....
Rebounding.....	11.8.....Nicole Enabosi.....	1.....12
.....	7.4.....Samone DeFreese.....	11.....208
FG%.....	.508.....Nicole Enabosi.....	3.....68
.....	.444.....Samone DeFreese.....	12.....
Assists.....	4.0.....Abby Gonzales.....	6.....149
FT%.....	.707.....Nicole Enabosi.....	11.....
Steals.....	2.0.....Nicole Enabosi.....	5.....144
3FG%.....
3FG Made.....	1.8.....Bailey Kargo.....	7.....
Blocks.....	1.9.....Nicole Enabosi.....	4.....58
.....	1.6.....Rebecca Lawrence.....	5.....94
A/TO Ratio.....	1.3.....Abby Gonzales.....	7.....219
Off Reb.....	2.9.....Nicole Enabosi.....	6.....
.....	2.6.....Samone DeFreese.....	8.....
Def Reb.....	8.9.....Nicole Enabosi.....	1.....5
.....	4.8.....Samone DeFreese.....	9.....
Minutes.....	34.8.....Nicole Enabosi.....	4.....
.....	32.5.....Abby Gonzales.....	10.....
.....	30.5.....Samone DeFreese.....	18.....
Dbl Dbls.....	23.0.....Nicole Enabosi.....	1.....6

To be ranked, player must appear in at least 75% of their team's games

DELAWARE STREAKIN'

Current Streak: L2 (dating to last season)
Longest Win Streak:
Longest Losing Streak:
Current Home Streak: L1 (dating to last season)
Longest Home Win Streak:
Longest Home Losing Streak:
Current Road/Ntl Streak: L2 (dating to last season)
Longest Road/Neutral Win Streak:
Longest Road/Neutral Losing Streak:

NOTABLES

DOUBLE-DOUBLES	SEASON	CAREER	20-PT. GAMES	SEASON	CAREER
Samone DeFreese		6	Samone DeFreese		1
Nicole Enabosi		44	Nicole Enabosi		17
Makeda Nicholas		5	Bailey Kargo		1
DOUBLE-FIGURE PTS.	SEASON	CAREER	DOUBLE-FIGURE REB.	SEASON	CAREER
Samone DeFreese		19	Samone DeFreese		7
Nicole Enabosi		64	Nicole Enabosi		47
Abby Gonzales		12	Rebecca Lawrence		1
Bailey Kargo		11	Alison Lewis		1
Rebecca Lawrence		2	Makeda Nicholas		11
Justina Mascaró		2			
Makeda Nicholas		18	20-REB. GAMES	SEASON	CAREER
Lizzie O'leary		2	Nicole Enabosi		1

HEAD COACH NATASHA ADAIR



19-13 (.594)
First Season at Delaware
91-98 (.481)
Seventh Season Overall
South Florida '94

**PLAYING CAREER**

1990-92.....Pensacola Junior College.....Two state championships
Led team in rebounding
 1992-94.....University of South Florida.....Single-season rebounding record

COACHING CAREER

1998-04.....Georgetown University.....Assistant Coach
Averaged 15 wins per season
Four WNIT appearances
 2004-07.....Wake Forest University.....Assistant Coach
Averaged 13 wins per season
One WNIT appearance
 2007-12.....Wake Forest University.....Associate Head Coach
Averaged 17 wins per season
Three WNIT appearances

HEAD COACHING TENURE

YEAR	RECORD	CONFERENCE	HIGHLIGHTS
College of Charleston			
2012-13.....	16-16.....	11-9 (SoCon).....	Postseason WBI (1-1)
2013-14.....	19-15.....	9-7 (CAA).....	Postseason WBI (2-1)
CofC TOTAL 35-31.....20-16..... Two WBI appearances			
Georgetown University			
2014-15.....	4-27.....	2-16 (BIG EAST)....	
2015-16.....	16-14.....	9-9.....	Postseason WNIT (0-1)
2016-17.....	17-13.....	9-9.....	Postseason WNIT (0-1)
GU TOTAL 37-54.....20-34..... Two WNIT appearances			
University of Delaware			
2017-18.....	19-13.....	11-7 (CAA).....	Postseason WNIT (0-1)
2018-19.....			
UD TOTAL 19-13 11-7 One WNIT appearance			
CAREER..... 91-98.....20-14 (CAA)			

Natasha Adair was selected as just the fourth women's basketball head coach in the program's illustrious history on May 14, 2017.

In her first season with the Blue Hens, Adair guided Delaware to its most wins (19) and first postseason appearance since the 2013-14 campaign. Additionally, the Hens captured 10 conference victories for the first time since 2012-13.

Under Adair, the Blue Hens were an offensive threat as Delaware averaged its most points (65.8) since 2012-13. Additionally, the Hens logged 80-plus points in six different contests for the first time in six seasons while logging five straight games of 70-plus points to open the year while UD only reached 70-plus points three times in each of the previous two seasons.

Delaware also saw the fifth player in program history pick up Conference Player of the Year accolades as forward Nicole Enabosi earned the Colonial Athletic Association's top individual award while also garnering CAA All-First Team and All-Defensive Team honors for the second straight season. Enabosi finished her junior year by overtaking the Blue Hens single-season records in rebounds (375) and double-doubles (23) while her name is littered among the Delaware single-season Top 10 for points, points per game, rebounds per game, blocked shots, field goals made, field goal percentage, free throws made and free throws attempted.

Adair, who has more than 20 years of coaching experience under her belt, has received the national attention of USA Basketball and currently serves as an assistant coach for the U18 Women's National Basketball Team and has spoken at the USA Basketball Las Vegas Coach Academy. Additionally, Adair served as a U19 Women's World Cup Team Trials Court Coach during the summer of 2017.

Adair joined the Blue Hens from Georgetown University, where she turned around a four-win Hoya program to a postseason contender in three seasons as head coach. Behind Adair's leadership, GU finished 2016-17 with a 17-13 record, the most wins for the Hoyas since 2011-12, and garnered the team's second straight trip to the Postseason WNIT.

The Silver Spring, Md. native is no stranger to the Colonial Athletic Association as her first head coaching stint took her to the College of Charleston, where she was 35-31 overall. In the Cougars' first season in the CAA in 2013-14, Adair guided The College to record of 19-15, marking the third-highest win total in the school's Division I era. Additionally, the squad finished third in conference play, defeated five postseason teams from the previous year and advanced to the semifinals of both the CAA Championship and the Women's Basketball invitational.

Adair played collegiately at Pensacola Junior College (1990-92) before playing and graduating from the University of South Florida with a degree in communications in 1994. She previously spent 13 seasons in the assistant coaching ranks, with seven years (2004-12) at Wake Forest University and six seasons (1998-04) at Georgetown University. Her coaching career has seen her develop and mentor 12 players who went on to play at the professional level.



BOB CLARK
Associate Head Coach



SARAH JENKINS
Assistant Coach



MYKALA WALKER
Assistant Coach



ADRIENNE EISENHAUER
Director of Operations



DAVID WHITE
Asst. Director of Ops

#0 GADSON LEFFT

Senior | Forward/Guard | 6-0 | History
Lake Wylie, S.C. | Heathwood Hall | Clemson



CAREER STATISTICS

- » Born June 9, 1996 in Columbia, S.C.
- » Nickname is 'Gaddy'
- » Daughter of Ricky and Benita Lefft; has two siblings, Evan and Alexis
- » Father is a lawyer for The Lefft Law Group, LLC, and specializes in the representation of college coaches and athletics directors as well as educational institutions; also a professor and member of the Alumni Board of Governors at his alma mater, the University of South Carolina
- » Uncle, Gerald Harrison, Jr., became the athletics director at Austin Peay in July 2018
- » Played two seasons for Heathwood Hall Episcopal School (2012-14), where she led the Highlanders to the school's first-ever SCISA State title as a team captain for head coach John O'Cain; scored over 1,000 points and grabbed more than 750 rebounds at HH
- » Averaged 2.6 rebounds and 2.2 points in 21 games at Clemson before transferring to Delaware following the 2015-16 campaign

SEASON/CAREER HIGHS

Season	Career (at Delaware)
Points:	
FG:	
FGA:	
3FG:	
3FGA:	
FT:	
FTA:	
Reb.:	
Assists:	
Blocks:	
Steals:	
Minutes:	

COACH ADAIR SAYS:

- » Blue-collar worker
- » True team player
- » Energy and enthusiasm is extremely contagious
- » Tough inside and has range past 17'
- » Important leader

#1 LOLO DAVENPORT

Freshman | Guard/Forward | 6-1 | Sociology Education
Plano, Texas | Plano Senior High | Proskills GEYBL



CAREER STATISTICS

- » Born October 19, 1999 in Dallas, Texas
- » Daughter of Bruce Davenport and Glenda Monette-Davenport
- » Has three siblings, Bruce Jr., Samuel and Mariah
- » Cousin, Alana Beard, was the 2017 and 2018 WNBA Defensive Player of the Year for the Los Angeles Sparks
- » Led Plano Senior High School to the first girls basketball state championship in school history as a senior (2018) for head coach Rodney Belcher
- » Named the 2018 UIL 6A State Tournament MVP; also earned UIL 6A All-State First Team honors
- » Helped guide the Wildcats to an overall record of 35-6 during senior campaign; team was ranked 11th nationally and second in Texas
- » Averaged 23 points, nine rebounds, four assists and one block per game as a senior
- » Will miss the 2018-19 season with following ACL surgery

SEASON/CAREER HIGHS

Season	Career
Points:	
FG:	
FGA:	
3FG:	
3FGA:	
FT:	
FTA:	
Reb.:	
Assists:	
Blocks:	
Steals:	
Minutes:	

COACH ADAIR SAYS:

- » Brings a high-major skillset to program
- » Versatile; could play all 5 spots
- » Ability to score, defend and rebound makes her a tough player
- » Is a WINNER!

#2 ABBY GONZALES

Junior | Guard | 5-7 | Early Childhood Education
Wexford, Pa. | North Allegheny | WPA Bruins



CAREER STATISTICS

			Total		3-Point		F-Throws		Rebounds										Scoring	
Season	gp-gs	min/avg	fg-fga	pct	fg-fga	pct	ft-fa	pct	off	def	tot	avg	pf	fo	ast	to	blk	stl	pts	avg
2016-17	30-22	855/28.5	50-179	.279	29-96	.302	15-24	.625	11	51	62	2.1	42	0	60	58	6	20	144	4.8
2017-18	31-31	1008/32.5	97-276	.351	39-127	.307	34-47	.723	14	94	108	3.5	62	0	125	94	3	45	267	8.6
TOTAL	61-53	1863/30.5	147-455	.323	68-223	.305	49-71	.690	25	145	170	2.8	104	0	185	152	9	65	411	6.7

- » Born May 17, 1998; daughter of Paulette and Andrew Gonzales; has two siblings, Jeremy and Evie
- » Father played football at Duquesne, while brother played for Pitt
- » Led North Allegheny HS to a mark of 94-16 as the starting point guard over four seasons; 1,000 point scorer for the Tigers; 2015-16 Female Senior Athlete of the Year
- » Guided NAHS to three straight PIAA quarterfinals appearances, including a trip to the 2014 and 2016 semifinals; Four-time Class 4A All-Conference selection; three-time team captain for head coach Spencer Stefko
- » Played AAU alongside current UD teammate Justina Mascaro
- » First player in 18 years to register at least 10 assists in a single game (Christine Koren '00 at Lafayette, 11/29/99)
- » Blue Hens active career leader with 185 assists
- » Tied alongside Bailey Kargo for 13th in program history with 68 career 3-point field goals made

SEASON/CAREER HIGHS

Season	Career
Points:	18 vs. Saint Peter's, 11/25/17
FG:	7, 2x, last at Charleston, 1/7/18
FGA:	26 vs. Saint Peter's, 11/25/17
3FG:	4, 3x, last at Drexel, 3/9/18
3FGA:	13 vs. Saint Peter's, 11/25/17
FT:	5 vs. Charleston, 2/18/18
FTA:	6 vs. Charleston, 2/18/18
Reb.:	7 vs. American, 11/16/17
Assists:	10 vs. Boston Univ., 11/19/17
Blocks:	1, 9x, last vs. Northeastern, 3/8/18
Steals:	5 at Army West Point, 12/6/17
Minutes:	45 vs. Saint Peter's, 11/25/17

COACH ADAIR SAYS:

- » Floor general; we go as Abby goes
- » Steady, fearless, tough
- » Will hold scoring role rather than facilitator
- » Has range from 3, IQ and ability to play off the bounce

#4 PARIS MCBRIDE

Freshman | Guard | 5-4 | University Studies
Woodbridge, Va. | Woodbridge | Team Takeover EYBL

CAREER STATISTICS

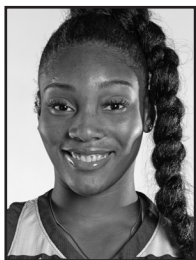
- » Born October 22, 1999 in Fairfax, Va.
- » Daughter of Denise Miles and James McBride
- » Has three siblings, Brittney, Alexis and Kennede
- » Led Woodbridge HS to an overall record of 85-24 under head coach Tamika Dudley
- » Finished career with 1,085 points
- » 2018 Conference Player of the Year
- » First Team All-Region; Two-time First Team All-State selection; Three-time First Team All-Conference selection; Second Team All-Met
- » Helped guide the Vikings to the conference and regional championship as a senior; regional championship MVP
- » Will face former AAU teammates Kayla Liles (Elon) and Elayna Birch-Smith (Delaware State) this season

SEASON/CAREER HIGHS

Season	Career
Points:	
FG:	
FGA:	
3FG:	
3FGA:	
FT:	
FTA:	
Reb.:	
Assists:	
Blocks:	
Steals:	
Minutes:	

COACH ADAIR SAYS:

- » Feisty, competitive nature
- » Great court vision
- » Ability to change speeds and get to rim will create scoring options
- » Relentless on-ball defender



CAREER STATISTICS

CAREER STATISTICS			Total		3-Point		F-Throws		Rebounds											Scoring	
Season	gp-gs	min/avg	fg-fga	pct	fg-fga	pct	ft-fa	pct	off	def	tot	avg	pf	fo	ast	to	blk	stl	pts	avg	
2014-15	32-20	614/19.2	57-184	.310	0-0	.000	30-58	.517	46	117	163	5.1	54	0	24	56	30	25	144	4.5	
2015-16	31-21	683/22.0	61-212	.288	3-15	.200	38-54	.704	62	123	185	6.0	46	1	31	54	37	20	163	5.3	
2016-17	30-28	868/28.9	89-236	.377	1-4	.250	49-68	.721	46	106	152	5.1	58	1	51	74	51	31	228	7.6	
2017-18	4-3	91/22.8	18-42	.429	0-3	.000	9-15	.600	4	13	17	4.3	14	1	9	19	7	3	45	11.3	
TOTAL	97-72	2256/23.3	225-674	.334	4-22	.182	126-195	.646	158	359	517	5.3	172	3	115	203	125	79	580	6.0	

- » First name pronounced 'mac-KAY-duh'
- » Born September 5, 1996
- » Daughter of Antonette and Orlando Nicholas; has one brother, Joshua
- » First Team All-State, All-League, All-County, All-Long Island and All-Conference selection; averaged 17.1 points, 10 rebounds and seven blocks per game under head coach Debbie Bradjevich at North Babylon
- » First player in program history to record back-to-back 17 rebound games (Jan. 17, 2016 vs. Towson; Jan. 22, 2016 vs. Drexel)
- » Has one year of eligibility remaining in 2018-19 after missing majority of senior year with a knee injury
- » Graduated in May 2018 with a Bachelor of Arts degree in psychology
- » Fifth in program history with 125 career blocks
- » Active career leader with 97 games played

SEASON/CAREER HIGHS

Season	Career
Points:	19 at Hofstra, 1/19/17
FG:	8, 2x, last at Hofstra, 1/19/17
FGA:	16, 2x, last vs. Elon, 2/7/16
3FG:	1, 4x, last vs. UNCW, 2/3/17
3FGA:	3, 2x, last vs. NDSU, 11/29/25
FT:	6, 2x, last at Buffalo, 11/10/17
FTA:	9 at Buffalo, 11/10/17
Reb.:	17, 2x, last vs. Drexel, 1/22/16
Assists:	6 vs. Hofstra, 2/12/17
Blocks:	6 at Northeastern, 2/17/17
Steals:	3, 5x, last vs. Elon, 2/24/17
Minutes:	46 vs. Elon, 2/7/16

COACH ADAIR SAYS:

- » Leadership will be vital
- » Will make immediate impact on both ends
- » Ability to score around rim and from mid-range makes her versatile and hard to guard

#12 LIZZIE O'LEARY

Sophomore | Forward | 6-2 | Hospitality Industry Management
Willow Grove, Pa. | Abington Senior | Philadelphia Comets

CAREER STATISTICS

			Total		3-Point		F-Throws		Rebounds											Scoring	
Season	gp-gs	min/avg	fg-fga	pct	fg-fga	pct	ft-fa	pct	off	def	tot	avg	pf	fo	ast	to	blk	stl	pts	avg	
2017-18	32-0	499/15.6	50-103	.485	1-4	.250	29-40	.725	31	58	89	2.8	56	1	18	33	17	10	130	4.1	
TOTAL	32-0	499/15.6	50-103	.485	1-4	.250	29-40	.725	31	58	89	2.8	56	1	18	33	17	10	130	4.1	

- » Born October 14, 1998 in Agana Heights, Guam
- » Daughter of Tim and Martha O'Leary; oldest of three siblings
- » Led Abington HS to three 20-win seasons and two district title games, including the 2017 District One 6A title under head coach Dan Marsh
- » Surpassed the 1,000-point mark and averaged 13.9 points, 10.2 rebounds, 2.6 assists and 2.5 blocks per game as a senior
- » 2017 All-Intelligencer Girls Basketball Player of the Year and Sports Writers Pennsylvania All-State Second Team; Three-time First Team All-League; Two-time team captain
- » Previously played the 2013-14 season at Archbishop Wood, where she led the team to the District 12 Championship and Philadelphia Catholic League and Pennsylvania State Finals
- » 2017-18 CAA All-Rookie Team; Team Sixth Woman of the Year

SEASON/CAREER HIGHS

Season	Career
Points:	13 at Elon, 1/21/18
FG:	6 at Elon, 1/21/18
FGA:	9 at Elon, 1/21/18
3FG:	1 at Elon, 1/21/18
3FGA:	2 vs. Towson, 1/14/18
FT:	4, 2x, last vs. Drexel, 3/1/18
FTA:	4, 6x, last at Towson, 3/3/18
Reb.:	7, 2x, last at Elon, 1/21/18
Assists:	2, 2x, last at Georgetown, 3/16/18
Blocks:	3 at Georgetown, 3/16/18
Steals:	3 vs. William & Mary, 2/9/18
Min.:	25, 2x, last vs. Delaware St, 12/10/17

COACH ADAIR SAYS:

- » Very high basketball IQ; basketball savvy
- » Glue player that is fundamentally sound
- » Can score inside and out
- » Physical on glass; great screener and passer

#20 JASMINE DICKEY

Freshman | Guard/Forward | 5-10 | University Studies
Baltimore, Md. | Catonsville | MD Lady Tigers

CAREER STATISTICS

- » Born February 23, 2000 in Baltimore, Md.
- » Daughter of Nikisha and Brian Dickey; two younger siblings, Brian and Ashley
- » Led Catonsville HS to an overall record of 93-14 in four seasons under head coach Mike Mohler
- » Guided the Comets to the 2017 Maryland Class 4A State Championship title and the 2018 Maryland Class 4A State Championship game
- » All-time leading scorer in Baltimore County with 2,091 career points
- » Two-time Maryland Ms. Basketball (2017, 2018)
- » 2018 Baltimore Sun All-Metro Player of the Year; Catonsville Times Female Athlete of the Year; McDonald's All-American nominee
- » Averaged 20.1 points, 10.8 rebounds, 4.4 steals, 3.8 assists and 1.3 blocks per contest as a senior; posted 72.0 free throw percentage
- » Logged 35 points and 28 rebounds in Comets' sectional semifinals win
- » Collected 20 points, 13 rebounds and 10 steals in 76-41 win over Pikesville to claim Catonsville's third Baltimore County championship in 2018

SEASON/CAREER HIGHS

Season	Career
Points:	
FG:	
FGA:	
3FG:	
3FGA:	
FT:	
FTA:	
Reb.:	
Assists:	
Blocks:	
Steals:	
Minutes:	

COACH ADAIR SAYS:

- » A true warrior
- » Brings a next level of competitiveness
- » Ability to rebound and run helps create high-paced tempo
- » Lock-down defender
- » Star in the making

#22 SAMONE DeFREESE

Junior | Forward | 6-0 | Pre-Vet Medicine and Animal Biology
Bergenfield, N.J. | Berkshire (Mass.) | New York Gauchos

CAREER STATISTICS

			Total		3-Point		F-Throws		Rebounds											Scoring	
Season	gp-gs	min/avg	fg-fga	pct	fg-fga	pct	ft-fa	pct	off	def	tot	avg	pf	fo	ast	to	blk	stl	pts	avg	
2016-17	12-0	24/2.0	0-8	.000	0-2	.000	2-2	1.000	1	2	3	0.3	5	0	0	1	0	0	2	0.2	
2017-18	32-27	975/30.5	143-322	.444	10-55	.182	66-110	.600	83	153	236	7.4	80	2	60	78	8	40	362	11.3	
TOTAL	44-27	999/22.7	143-330	.433	10-57	.175	68-112	.607	84	155	239	5.4	85	2	60	79	8	40	364	8.3	

- » Born February 27, 1997 in Englewood, N.J.
- » Daughter of Freda Boecherer; older sister, Samantha, was a 1,000-point scorer and two-time All-CAA selection at Northeastern (2012-16)
- » Averaged 17.3 points, 8.6 rebounds, 2.4 assists, 2.2 steals and 1.0 blocks per game in four seasons at Berkshire School in Sheffield, Mass.
- » Earned The Robert A. Powers Award, which recognizes a Berkshire senior who has demonstrated personal growth, loyalty to the school and dependability of performance which has distinguished her career; Also awarded The Herger Trophy, which is awarded to a senior female student who has best exemplified proficiency and sportsmanship in inter-scholastic athletics
- » 2018 CAA All-Tournament Team; Arthur Ashe Jr. Sports Scholar
- » Six career double doubles
- » 2018-19 Preseason All-CAA

SEASON/CAREER HIGHS

Season	Career
Points:	24 vs. Boston Univ., 11/19/17
FG:	10 vs. Boston Univ., 11/19/17
FGA:	21 vs. Boston Univ., 11/19/17
3FG:	2, 2x, last vs. UNCW, 1/28/18
3FGA:	7 vs. Boston Univ., 11/19/17
FT:	5, 5x, last at Towson, 3/3/18
FTA:	8 vs. Charleston, 2/18/18
Reb.:	14 at Elon, 1/21/18
Assists:	7 vs. Boston Univ., 11/19/17
Blocks:	2 at William & Mary, 2/23
Steals:	4 vs. Saint Peter's, 11/25/17
Min.:	45 at Drexel, 3/9/18

COACH ADAIR SAYS:

- » Will be a big part of team's offense and defense
- » Capable of taking over a game
- » Rebounding and free throws will be key
- » Junior leader

#23 BAILEY KARGO

Junior | Guard | 5-10 | Neuroscience
Greensboro, N.C. | Walter Hines Page | Winston-Salem Stealers

CAREER STATISTICS

			Total		3-Point		F-Throws		Rebounds											Scoring	
Season	gp-gs	min/avg	fg-fga	pct	fg-fga	pct	ft-fa	pct	off	def	tot	avg	pf	fo	ast	to	blk	stl	pts	avg	
2016-17	30-8	408/13.6	24-85	.282	12-48	.250	8-12	.667	3	20	23	0.8	27	1	18	32	0	10	68	2.3	
2017-18	32-32	914/28.6	85-244	.348	56-145	.386	34-39	.872	7	19	26	0.8	64	3	51	48	4	26	260	8.1	
TOTAL	62-40	1322/21.3	109-329	.331	68-193	.352	42-51	.824	10	39	49	0.8	91	4	69	80	4	36	328	5.3	

- » Born October 31, 1997 in Johnstown, Pa.
- » Daughter of Ray and Kathy Kargo; both are physical therapists; father played basketball at Lebanon Valley (1988-91)
- » Has two younger siblings, Campbell and Reagan
- » Three-time All-Conference pick out of Walter Hines Page HS; second female in school history to register 1,000 career points in just three seasons; 2016 All-Metro 4A Conference Player of the Year
- » Averaged 18.6 points, 3.6 rebounds, 2.0 assists and 1.9 steals as a senior
- » Aspirations of becoming an optometrist
- » Finished 2018 tied for fourth in UD single-season history with 56 3-point field goals made, a mark good for sixth in the CAA
- » Tied for 13th in program history alongside Abby Gonzales with 68 career 3-point field goals made
- » Also tied for sixth all-time with a 35.2 3-point field goal percentage and 18th with 193 3-point field goal attempts

SEASON/CAREER HIGHS

Season	Career
Points:	21 vs. Elon, 1/5/18
FG:	7, 2x, last at Northeastern, 2/4/18
FGA:	13, 2x, last at Northeastern, 2/4/18
3FG:	5 vs. Elon, 1/5/18
3FGA:	8, 3x, last vs. UNCW, 1/28/18
FT:	4, 2x, last vs. EIU, 11/26/17
FTA:	4, 3x, last vs. EIU, 22/26/17
Reb.:	5, 2x, last vs. Northeastern, 3/8/18
Assists:	4, 2x, last at Princeton, 12/2/17
Blocks:	1, 4x, last at Drexel, 3/9/18
Steals:	3 at Princeton, 12/2/17
Min.:	46 vs. Saint Peter's, 11/25

COACH ADAIR SAYS:

- » Perimeter threat
- » Has worked tirelessly on ball skills
- » Consistency from 3 and a strong mid-range game will keep the defense honest

#24 JUSTINA MASCARO

Sophomore | Guard | 5-11 | Finance
Bethel Park, Pa. | Bethel Park | WPA Bruins



COACH ADAIR SAYS:

- » Has gotten into her groove
- » Attacks the rim
- » Will be a threat this season
- » Tough competitor
- » Expected to have a breakout year

CAREER STATISTICS

Season	gp-gs	min/avg	Total		3-Point		F-Throws		Rebounds				Scoring	
			fg-fga	pct	fg-fga	pct	ft-fa	pct	off	def	tot	avg	pts	avg
2017-18	32-5	445/13.9	41-101	.406	3-25	.120	31-44	.705	26	49	75	2.3	35	3.6
TOTAL	32-5	445/13.9	41-101	.406	3-25	.120	31-44	.705	26	49	75	2.3	35	3.6

- » Born September 10, 1998 in Pittsburgh, Pa.
- » Daughter of John Mascaro, Jr. and Holly Mascaro; both parents attended Ohio Univ.; father played football for the Bobcats; father is the president of Mascaro Construction
- » Has three siblings, Johnny, Joey and Julia; brother, Johnny, played football at Carnegie Mellon while brother, Joey, is a senior guard for the Pitt men's basketball team
- » Led Bethel Park to an overall four-year record of 76-26 (.745) under head coach Jonna Burke; averaged nearly 15 points and seven rebounds per game in her career as a 1,000-point scorer
- » Recovered from ACL surgery to help guide the Black Hawks to the WPIAL title game and the first round of the PIAA playoffs as a senior
- » 2017 The Almanac Girls Basketball MVP and three-time First Team All-Section selection; two-time Elite 11 player
- » Played AAU alongside current UD teammate Abby Gonzales

SEASON/CAREER HIGHS

Season	Career
Points:	12 vs. Loyola, 12/22/17
FG:	5 vs. Loyola, 12/22/17
FGA:	9 vs. Northeastern, 1/26/18
3FG:	1, 3x, last at Northeastern, 2/4/18
3FGA:	4 vs. Northeastern, 1/26/18
FT:	3, 3x, last vs. Towson, 1/14/18
FTA:	4, 4x, last at Towson, 3/3/18
Reb.:	7 vs. Northeastern, 1/26/18
Assists:	4 at Buffalo, 11/10/17
Blocks:	1, 4x, last at Northeastern, 2/4/18
Steals:	1, 10x, last at William & Mary, 2/23/18
Minutes:	29 vs. Northeastern, 1/26/18

#25 REBECCA LAWRENCE

Junior | Forward | 6-3 | Exercise Science
Ridgefield, Conn. | Ridgefield | Connecticut Basketball Club



COACH ADAIR SAYS:

- » Versatile player with a high-major skill set
- » Ability to face up and score around the basket
- » Attacks the rim

CAREER STATISTICS

Season	gp-gs	min/avg	Total		3-Point		F-Throws		Rebounds				Scoring	
			fg-fga	pct	fg-fga	pct	ft-fa	pct	off	def	tot	avg	pts	avg
2016-17	21-0	127/6.0	7-22	.318	1-2	.500	2-2	1.000	3	6	9	0.4	8	0.8
2017-18	32-29	729/22.8	73-195	.374	3-35	.086	10-12	.833	29	94	123	3.8	50	5.0
TOTAL	53-29	856/16.2	80-217	.369	4-37	.108	12-14	.857	32	100	132	2.5	58	3.3

- » Born February 17, 1998
- » Daughter of Judith and Gary Lawrence
- » Has one older brother, Robert
- » Dual citizen in the United States and Britain
- » Two-time CHSCA First Team All-State selection from Ridgefield High School; helped guide the Tigers to the FCIAC Championship and a CIAC state finals appearance as a junior
- » Four-time All-FCIAC honoree; 2015-16 FCIAC Scholar Athlete
- » 2x CAA Academic Honor Roll
- » 17th in Delaware career record books with 55 blocked shots
- » 2017-18 Team Most Improved Player
- » Logged 14 multi-block games as a sophomore

SEASON/CAREER HIGHS

Season	Career
Points:	12 vs. William & Mary, 2/9/18
FG:	6 vs. William & Mary, 2/9/18
FGA:	12 at UNCW, 1/19/18
3FG:	1, 4x, last vs. JMU, 2/16/18
3FGA:	3, 2x, last at William & Mary, 2/23/18
FT:	2, 5x, last vs. Charleston, 2/18/18
FTA:	2, 6x, last vs. Charleston, 2/18/18
Reb.:	11 at Charleston, 1/17/18
Assists:	3 at William & Mary, 2/23/18
Blocks:	5 at Elon, 1/21/18
Steals:	2 at Drexel, 3/9/18
Min.:	36 vs. Northeastern, 3/8/18

#30 KAYLA SHAW

Redshirt Sophomore | Guard | 5-10 | Communications
Scottsdale, Ariz. | Chaparral | Monmouth



COACH ADAIR SAYS:

- » Pure shooter with deep range
- » Has ability to break down defender
- » True competitor, leader and a winner
- » Will be a major scoring option

CAREER STATISTICS

Season	gp-gs	min/avg	Total		3-Point		F-Throws		Rebounds				Scoring	
			fg-fga	pct	fg-fga	pct	ft-fa	pct	off	def	tot	avg	pts	avg
2016-17	21-0	127/6.0	7-22	.318	1-2	.500	2-2	1.000	3	6	9	0.4	8	0.8
2017-18	32-29	729/22.8	73-195	.374	3-35	.086	10-12	.833	29	94	123	3.8	50	5.0
TOTAL	53-29	856/16.2	80-217	.369	4-37	.108	12-14	.857	32	100	132	2.5	58	3.3

- » Born December 16, 1997 in Phoenix, Ariz.
- » Daughter of Lisa and Larry Shaw
- » Has two older brothers, Brian and Jeff, and a twin brother, Dillon
- » Scored more than 1,200 points for Chaparral High School
- » Led the Firebirds three times to the Sweet 16 of the Arizona State Playoffs, while also guiding CHS to the Elite 8 as a sophomore
- » 2015-16 Sectional Player of the Year; also earned All-Second First Team and All-Division First Team honors
- » Two-time All-State Honorable Mention, All-Division I Section II First and Second Team and two-time All-City performer
- » Transferred to Delaware from Monmouth following sophomore season (2017-18)
- » MAAC All-Rookie Team; shattered program record with 93 3-pointers as a freshman
- » Averaged 11.1 points, 1.7 rebounds, 0.9 steals, 0.9 assists for Hawks

SEASON/CAREER HIGHS

Season	Career (at Delaware)
Points:	
FG:	
FGA:	
3FG:	
3FGA:	
FT:	
FTA:	
Reb.:	
Assists:	
Blocks:	
Steals:	
Minutes:	

#33 NICOLE ENABOSI

Senior | Forward | 6-0 | Business Management
Gaithersburg, Md. | Our Lady of Good Counsel

COACH ADAIR SAYS:

» Expected to step up in leadership role
» Will be a coach on the sidelines
» Experience will bode well when she returns from injury next season

CAREER STATISTICS

			Total		3-Point		F-Throws		Rebounds											Scoring	
Season	gp-gs	min/avg	fg-fga	pct	fg-fga	pct	ft-fa	pct	off	def	tot	avg	pf	fo	ast	to	blk	stl	pts	avg	
2015-16	31-16	798/25.7	91-200	.455	0-0	.000	93-153	.608	69	151	220	7.1	82	1	21	78	33	39	275	8.9	
2016-17	29-29	939/32.4	121-267	.453	1-2	.500	154-212	.726	88	201	289	10.0	81	2	67	90	26	53	397	13.7	
2017-18	32-32	1112/34.8	202-398	.508	2-3	.667	171-242	.707	92	286	378	11.8	108	4	72	100	61	64	577	18.0	
TOTAL	92-77	2849/31.0	414-865	.479	3-5	.600	418-607	.689	249	638	887	9.6	271	7	160	268	120	156	1249	13.6	

- » Born March 26, 1997
- » Daughter of Ora Enabosi; is an only child
- » Within the Top 10 of eight career categories; double doubles (third; 44), rebounds per game (fourth; 9.6), FG% (fifth; .479), FTA (fifth; 607), blocked shots (sixth; 120), FT made (sixth; 418), rebounds (seventh; 887), points per game (seventh; 13.6)
- » Set school-record with eight straight double doubles in 2017-18
- » Set school single-season record with 378 rebounds and 23 double doubles in 2017-18
- » Registered fifth (and first since 1989) 20-20 game in school history with 23 points and 20 rebounds against Loyola (Dec. 22)
- » 2017-18 CAA Player of the Year; CAA All-Defensive Team; UD Outstanding Female Athlete of the Year
- » Trained with the Nigerian National Team in July 2018
- » Will miss 2018-19 season following ACL surgery

SEASON/CAREER HIGHS

Season	Career
Points:	27 vs. Saint Peter's, 11/25/17
FG:	12 vs. Saint Peter's, 11/25/17
FGA:	20 at James Madison, 2/25/18
3FG:	1, 3x, last at Towson, 3/3/18
3FGA:	3 at Hartford, 11/13/17
FT:	13 vs. East Carolina, 11/22/15
FTA:	18 at Hofstra, 1/19/17
Reb.:	20 vs. Loyola, 12/22/17
Assists:	6, 2x, last at Hartford, 11/13/17
Blocks:	7 at Georgetown, 12/10/15
Steals:	5, 2x, last vs. Hofstra, 2/11/18
Min.:	48 vs. Saint Peter's, 11/25/17

#35 ALISON LEWIS

Redshirt Senior | Guard | 5-9 | Environmental Studies & History
Kennett Square, Pa. | Sanford (Del.) | Providence

COACH ADAIR SAYS:

» Has worked extremely hard in offseason
» Scoring ability will open floor
» Explosive on the perimeter
» One of team's hardest workers

CAREER STATISTICS

			Total		3-Point		F-Throws		Rebounds											Scoring	
Season	gp-gs	min/avg	fg-fga	pct	fg-fga	pct	ft-fa	pct	off	def	tot	avg	pf	fo	ast	to	blk	stl	pts	avg	
2017-18	20-0	200/10.0	22-83	.265	0-4	.000	11-18	.611	20	24	44	2.2	14	0	13	22	6	9	55	2.8	
TOTAL	20-0	200/10.0	22-83	.265	0-4	.000	11-18	.611	20	24	44	2.2	14	0	13	22	6	9	55	2.8	

- » Born September 9, 1996
- » Daughter of Cathy Lewis and the late Alonzo Lewis
- » Father played basketball at La Salle and was a historic coach in the Philadelphia area that led Chester High School to two state championships before being named the head coach at Cheney; father is a member of the La Salle and Big Five Halls of Fame
- » Guided Sanford (Del.) to the 2014 Delaware State title while putting up 16.8 points, 6.3 rebounds, 3.2 assists and 3.1 steals per game during her senior campaign; recorded 27 points on 12-of-18 shooting in the State Championship game vs. St. Elizabeth's; two-time Delaware First Team All-State honoree
- » Played 27 games in two seasons at Providence before transferring to the University of Delaware
- » Has one year of eligibility remaining in 2018-19

SEASON/CAREER HIGHS

Season	Career (at Delaware)
Points:	8 at Charleston, 1/17/18
FG:	3, 3x, last at Towson, 3/3/18
FGA:	15 vs. Northeastern, 1/26/18
3FG:	
3FGA:	2 at Charleston, 1/17/18
FT:	3 at Georgetown, 3/16/18
FTA:	4 at Georgetown, 3/16/18
Reb.:	10 at Charleston, 1/17/18
Assists:	3 at Towson, 3/3/18
Blocks:	1, 6x, last at Georgetown, 3/16/18
Steals:	2, 2x, last at Towson, 3/3/18
Min.:	24 vs. Northeastern, 1/26/18

#44 ERIN ANTOSH

Sophomore | Forward/Center | 6-3 | Marine Science
Townsend, Mass. | Lawrence Academy | MCW Starz

COACH ADAIR SAYS:

» Has a bright upside
» Agile on her feet and physical around the rim
» Shot blocking ability
» Has a guard skillset at 6-4

CAREER STATISTICS

		Total		3-Point		F-Throws		Rebounds											Scoring	
Season	gp-gs	min/avg	fg-fga	pct	fg-fga	pct	ft-fa	pct	off	def	tot	avg	pf	fo	ast	to	blk	stl	pts	avg
2017-18	14-0	95/6.8	12-31	.387	1-8	.125	4-8	.500	9	15	24	1.7	21	0	2	7	1	4	29	2.1
TOTAL	14-0	95/6.8	12-31	.387	1-8	.125	4-8	.500	9	15	24	1.7	21	0	2	7	1	4	29	2.1

- » Born August 12, 1998 in Concord, Mass.
- » Daughter of Janet Antosh and Kevin Antosh; one older sister, Allison
- » Enjoys art, drawing, painting and scuba diving; figure skated for 15 years
- » Averaged 10.4 points, 8.2 rebounds, 2.8 assists, 2.4 steals and 1.1 blocks per game as a senior at Lawrence Academy under head coach Donna Mastrangelo
- » Led squad to an overall mark of 79-21 (.790) with three semifinals appearances
- » Career 1,000-point scorer
- » Three-time league All-Star, Two-time ISL All-League honoree and team MVP

SEASON/CAREER HIGHS

Season	Career
Points:	7 vs. Delaware State, 12/10/17
FG:	3, 2x, last at UNCW, 1/19/18
FGA:	7, 2x, last vs. Loyola, 12/22/17
3FG:	1 vs. UNCW, 1/28/18
3FGA:	2, 3x, last vs. UNCW, 1/28/18
FT:	2 at Army West Point, 12/6/17
FTA:	2, 4x, last at UNCW, 1/19/18
Reb.:	6 at UNCW, 1/19/18
Assists:	1 vs. Delaware State, 12/10/17
Blocks:	1 vs. Loyola, 12/22/17
Steals:	2 vs. Delaware State, 12/10/17
Min.:	15 vs. Loyola, 12/22/17

<div>1</div> <div>Delaware at Northern Iowa</div> <div>Friday, November 9, 2018 McLeod Center Cedar Falls, Iowa</div>	<div>2</div> <div>Delaware at Preseason WNIT</div> <div>Date/Location TBD</div>
<div>3</div> <div>Delaware at Preseason WNIT</div> <div>Date/Location TBD</div>	<div>4</div> <div>Delaware at Delaware State</div> <div>Tuesday, November 20, 2018 Memorial Hall Dover, Del.</div>

**2017-18 Delaware Women's Basketball
Delaware Combined Team Statistics (FINAL)
All games**

RECORD:	OVERALL	HOME	AWAY	NEUTRAL
ALL GAMES	19-13	9-4	8-8	2-1
CONFERENCE	11-7	6-3	5-4	0-0
NON-CONFERENCE	8-6	3-1	3-4	2-1

##	Player	gp-gs	min	avg	Total		3-Point		F-Throw		Rebounds				pf	dq	a	to	blk	stl	pts	avg
					fg-fga	fg%	3fg-fga	3fg%	ft-fa	ft%	off	def	tot	avg								
33	Enabosi, Nicole	32-32	1112	34.8	202-398	.508	2-3	.667	171-242	.707	92	286	378	11.8	108	4	72	100	61	64	577	18.0
22	DeFreese, Samone	32-27	975	30.5	143-322	.444	10-55	.182	66-110	.600	83	153	236	7.4	80	2	60	78	8	40	362	11.3
02	Gonzales, Abby	31-31	1008	32.5	97-276	.351	39-127	.307	34-47	.723	14	94	108	3.5	62	0	125	94	3	45	267	8.6
23	Kargo, Bailey	32-32	914	28.6	85-244	.348	56-145	.386	34-39	.872	7	19	26	0.8	64	3	51	48	4	26	260	8.1
25	Lawrence, Rebecca	32-29	729	22.8	73-195	.374	3-35	.086	10-12	.833	29	94	123	3.8	50	1	21	24	51	8	159	5.0
12	Oleary, Lizzie	32-0	499	15.6	50-103	.485	1-4	.250	29-40	.725	31	58	89	2.8	56	1	18	33	17	10	130	4.1
24	Mascaro, Justina	32-5	445	13.9	41-101	.406	3-25	.120	31-44	.705	26	49	75	2.3	35	0	35	34	4	10	116	3.6
21	West, Kiersten	26-1	309	11.9	32-99	.323	6-29	.207	25-39	.641	28	42	70	2.7	62	2	9	26	4	20	95	3.7
35	Lewis, Alison	20-0	200	10.0	22-83	.265	0-4	.000	11-18	.611	20	24	44	2.2	14	0	13	22	6	9	55	2.8
05	Nicholas, Makeda	4-3	91	22.8	18-42	.429	0-3	.000	9-15	.600	4	13	17	4.3	14	1	9	19	7	3	45	11.3
44	Antosh, Erin	14-0	95	6.8	12-31	.387	1-8	.125	4-8	.500	9	15	24	1.7	21	0	2	7	1	4	29	2.1
15	Roberts, Danielle	11-0	123	11.2	2-21	.095	1-13	.077	5-10	.500	3	13	16	1.5	10	0	16	16	1	4	10	0.9
Team											63	78	141				9					
Total.....		32	6500		777-1915	.406	122-451	.271	429-624	.688	409	938	1347	42.1	576	14	431	510	167	243	2105	65.8
Opponents.....		32	6500		687-1927	.357	166-595	.279	393-558	.704	383	821	1204	37.6	601	-	393	497	117	266	1933	60.4

TEAM STATISTICS	DELAWARE	OPP	Date	Opponent	Score	Att.
SCORING	2105	1933	11/10/17	at Buffalo	L 73-87	1015
Points per game	65.8	60.4	11/13/17	at Hartford	W 72-63	714
Scoring margin	+5.4	-	11/16/17	AMERICAN	W 72-56	1466
FIELD GOALS-ATT	777-1915	687-1927	11/19/17	BOSTON UNIVERSITY	Lot 79-85	1330
Field goal pct	.406	.357	^ 11/25/17	vs Saint Peter's	Lo2 87-90	1025
3 POINT FG-ATT	122-451	166-595	^ 11/26/17	vs Eastern Illinois	W 66-37	732
3-point FG pct	.271	.279	11/29/17	at St. Bonaventure	W 53-52	953
3-pt FG made per game	3.8	5.2	12/02/17	at Princeton	L 60-78	699
FREE THROWS-ATT	429-624	393-558	12/06/17	at Army	W 70-59	432
Free throw pct	.688	.704	12/10/17	DELAWARE STATE	W 84-49	1311
F-Throws made per game	13.4	12.3	12/22/17	LOYOLA	W 71-38	1414
REBOUNDS	1347	1204	* 12/29/17	at Drexel	L 53-74	679
Rebounds per game	42.1	37.6	* 01/05/18	ELON	W 80-66	1180
Rebounding margin	+4.5	-	* 01/07/18	at Col. of Charleston	W 68-59	280
ASSISTS	431	393	* 01/12/18	at Hofstra	W 58-51	318
Assists per game	13.5	12.3	* 01/14/18	TOWSON	W 51-49	1554
TURNOVERS	510	497	* 01/19/18	at UNCW	W 82-49	819
Turnovers per game	15.9	15.5	* 01/21/18	at Elon	L 51-64	872
Turnover margin	-0.4	-	* 01/26/18	NORTHEASTERN	L 53-64	1539
Assist/turnover ratio	0.8	0.8	* 01/28/18	UNCW	W 80-62	1865
STEALS	243	266	* 02/04/18	at Northeastern	L 59-73	392
Steals per game	7.6	8.3	* 02/09/18	WILLIAM & MARY	W 68-59	1359
BLOCKS	167	117	* 02/11/18	HOFSTRA	W 61-41	1753
Blocks per game	5.2	3.7	* 02/16/18	JAMES MADISON	L 53-56	1422
ATTENDANCE	19104	18462	* 02/18/18	COL. OF CHARLESTON	W 79-51	1503
Home games-Avg/Game	13-1470	16-916	* 02/23/18	at William & Mary	W 61-52	731
Neutral site-Avg/Game	-	3-1270	* 02/25/18	at James Madison	L 56-67	3494
			* 03/01/18	DREXEL	L 53-72	1408
			* 03/03/18	at Towson	W 81-55	481
			% 03/08/18	vs Northeastern	W 61-50	2053
			% 03/09/18	at Drexel	Lot 53-58	2120
			& 03/16/18	at Georgetown	L 57-67	653

^ = SJU Hawk Classic (Philadelphia, Pa.)

* = Conference game